

SUBJECT: SUBSTITUTE PARTS FOR THE JUNO-G LCD UNIT

This Service Information explains the method and cautions on installing the substitution LCD UNIT of the JUNO-G. Please note that Roland recommends having an authorized service center perform this service and is not liable for any issues when this procedure is not performed by one of our authorized service centers.

The position of the display will be fixed by the same procedure as the previous LCD UNIT. However since the wiring is different please install them as described below.

After installing the new LCD UNIT, please perform following updates.

1. Update the BOOT (Ver.1.01)
2. Update the PROGRAM (Ver.2.01)

On updating above, please note following.

- a. The new PROGRAM can not run on old BOOT. Therefore please update the BOOT first, and then update the PROGRAM.
- b. By updating the PROGRAM to Ver.2.01, the JUNO-G in subject will have functions equivalent of the JUNO-G System Program Ver.2.00. However, the PROGRAM itself is different. Therefore, since the one that we provide in this Service Information is exclusively for the substitution LCD UNIT, please do not apply it to the old LCD UNIT.

		PROGRAM		
		-1.06	2.00	2.01
BOOT	1.00	YES	YES	NO
	1.01	NO	NO	YES

- c. The Version 2 Supplementary Manual, if needed, is available from www.RolandUS.com.

Regarding the handling of User Data:

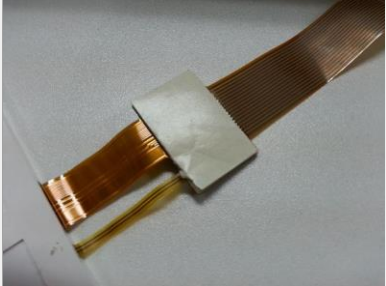

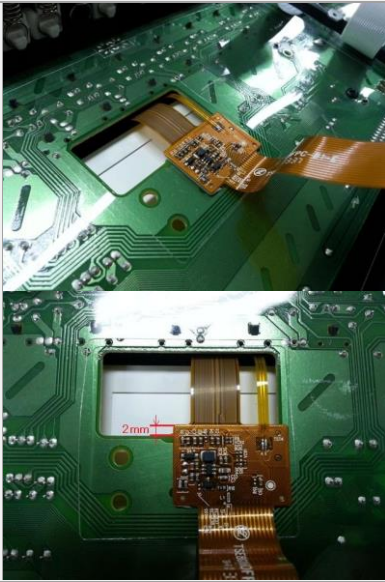
The updating itself will not erase the User Data. However, in case the user wants to have the User Data unchanged, please backup the User Data after the updating, then perform the Factory Reset, and recover the backup User Data back to the unit after the Factory Reset is completed.

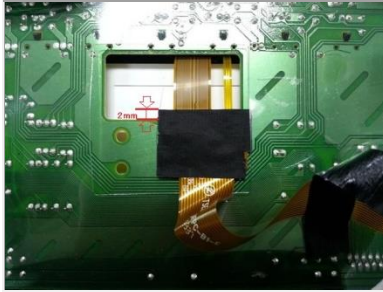
+ Required Items

- 5100038847 -- LCD CMS2P2433-E
- Customer-supplied Compact Flash Card with PC Card Adapter or PCMCIA PC Card (which can be used for the JUNO-G)
- Double faced adhesive tape with cushion 30mm x 20mm
- Acetate tape (30mm x 2pcs.)
- The Boot file 1.01
- The System file 2.01

+ Mounting the LCD UNIT

Please use the following procedure.

Step 1.	Step 2.	Step 3.
		
<p>Stick the double faced adhesive tape with cushion to the back side of the wiring.</p>	<p>Install the new LCD UNIT on the same way as the conventional one.</p>	<p>Fix to the Panel Board as shown on the above photo. In this time, please attach it to protrude approximately 2mm.</p>
Step 4.	Step 5.	



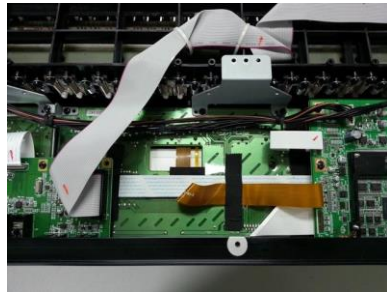
Stick the acetate tape on the electronic components in order to protect.



Connect the wiring to the Main Board.

For fix the wiring, we recommend DOUBLE FACED ADHESIVE TAPE with a bit of cushioning

- Finally, cover the wiring using the acetate tape as shown in the photo below.



- Please turn on the power. And then, please make sure the LCD backlight illuminate. If it does not illuminate, please check the connection to the LCD UNIT.

+ Update the BOOT / PROGRAM

1. Update the BOOT

- 1 Please download the update file and unzip.
- 2 Copy the "Roland" folder in the "1 (BOOT)" folder to the Compact Flash Card (or the PCMCIA PC Card).
- 3 Insert the Compact Flash Card (or the PCMCIA PC Card) above (2) to the JUNO-G. And then turn the power. After no indication for about 5 seconds, the update starts automatically. When message "Completed" appears in the screen, updating is completed. Remove the memory card and turn off the power.

The update of the BOOT will finish in about 30 seconds. If nothing is shown even after a minute or more, please turn off the power. And also check that the connection of the LCD UNIT is correct.

Caution: If you turn off the power before "Completed" is displayed, the JUNO-G will not start again. At this time, it will be necessary to replace the Main Board.

2. Update the PROGRAM

- 4 Delete all files stored in the Compact Flash Card (or the PCMCIA PC Card) that were used above.
- 5 Copy the "Roland" folder in the "2(APLI)" folder to the Compact Flash Card (or the PCMCIA PC Card).
- 6 Insert the Compact Flash Card (or the PCMCIA PC Card) above (4) to the JUNO-G. And then turn on the power - the update starts automatically.

When message "Completed" appears in the screen, updating is completed. Remove the memory card and turn off and on the power.