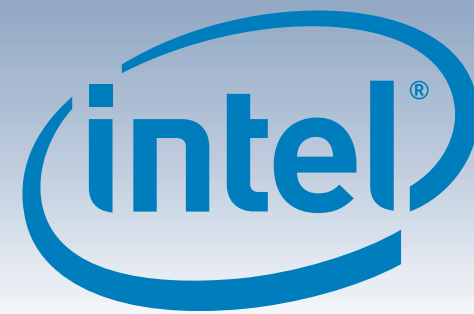


# Intel® Entry Server Chassis SC5299-E UP/DP/WS/BRP Quick Start User's Guide



Thank you for buying the Intel® Entry Server Chassis SC5299-E. The following information will help you to prepare your chassis for integration with your selected Intel® Server Board.

These guides and other supporting documents (including a list of supported server boards) are located on the web at <http://support.intel.com/support/motherboards/server>.

If you are not familiar with ESD (Electrostatic Discharge) procedures used during system integration, please see the Intel® Entry Server Chassis SC5299-E User Guide, available on the CD that came with your Intel® Server Board or at <http://support.intel.com/go/serverbuilder>.

Read all cautions and warnings before starting your server chassis integration.

## Building Value With Intel

### Server Products, Programs and Support

Get the high-value server solutions you need by taking advantage of the outstanding value Intel provides to system integrators:

- High-quality server building blocks
- Extensive breadth of server building blocks
- Solutions and tools to enable e-Business
- Intel® System Management Software
- Comprehensive training services
- Worldwide 24x7 technical support [AT&T Country Code + 866-655-6565]<sup>1</sup>
- World-class service, including a three-year limited warranty and Advanced Warranty Replacement<sup>1</sup>

Intel® ServerBuilder is your one-stop shop for information about all of Intel's server building blocks, such as:

- Product information, including product briefs and technical product specifications
- Sales tools, such as videos and presentations
- Training information, such as the Intel® Online Learning Center
- Support Information and much more

For more information on Intel's added-value server offerings, visit the Intel® ServerBuilder website at: [www.intel.com/go/serverbuilder](http://www.intel.com/go/serverbuilder)

<sup>1</sup>Available only to Intel® Channel Program Members, part of the Intel® e-Business Network.

### 1 Remove Side Cover

- 1 Remove two screws.
- 2 Push in latch.
- 3 Slide side cover rearward and remove.

### 2 Remove Front Bezel Assembly

- 1 Lift outward two bezel tabs on left side of bezel assembly to detach bezel assembly from chassis.
- 2 Rotate left side of front bezel assembly outward slightly.
- 3 Disengage three bezel clips that attach the right side of the bezel to the right side of the chassis and remove.

### 3 Remove Tool-less Hard Drive Cage

- 1 Loosen thumb screw. Apply pressure to right side of EMI shield to release EMI shield from hard drive cage.
- 2 Push blue plastic release mechanism upward to unlatch hard drive cage.
- 3 Once released, pull hard drive cage out of chassis.

### 4 Install Tool-less CD-ROM or DVD-ROM Drive

- 1 Remove EMI shield from 5.25-inch device drive bay.
- 2 Make sure latch is in "unlock" position.
- 3 Insert CD-ROM or DVD-ROM drive into device drive bay.
- 4 Line up holes in CD-ROM or DVD-ROM drive with holes in chassis.
- 5 Move latch to "lock" position.
- 6 Connect power (P3 or P4) cables and data cables to rear of CD-ROM or DVD-ROM drive. Data cables are included with the Intel® server board.

#### Warning

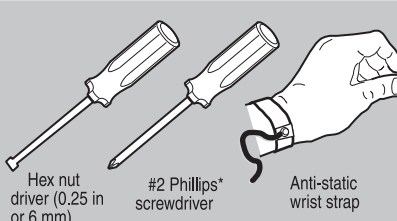
Read all caution and safety statements in this document before performing any of the instructions. Also see the *Intel® Server Board and Server Chassis Safety Information* document at: <http://support.intel.com/support/motherboards/server/sb/cs-010770.htm> for complete safety information.

Installation and service of this product to be performed only by qualified service personnel to avoid risk of injury from electrical shock or energy hazard.

#### Caution

Observe normal ESD (Electrostatic Discharge) procedures during system integration to avoid possible damage to server board and/or other components.

#### Tools Required



#### Intel® Server Board Guide

The server board that can be installed in your Intel® Entry Server Chassis SC5299-E is dependent upon the configuration of chassis purchased.

Chassis Configuration Product Code	Compatible Intel® Server Board
SC5299UP*	S3200SHV, S3210SHLC, S3210SHLX, S3430GPV
SC5299DP	S5000VSA, S5000PSL, S5000XSL, S3420GPLC, S3420GPLX
SC5299WS	S5000XVN
SC5299BRP	S5000VSA, S5000PSL, S5000XSL, S3420GPLC, S3420GPLX

\* SC5299UP does not have a fan duct or processor air duct.

### 5 Remove Fan Duct / System Fan Assembly

- 1 For DP/WS/BRP configurations only: Remove fan duct / system fan assembly from snap-in bracket on chassis.
- 2 For all supported Intel® server boards with SC5299UP configuration only: Press two bracket tabs outward and remove system fan.
- 3 For Intel® Server Board S3000AH with SC5299DP/BRP configuration only: Remove four plastic rivets with flat-headed screwdriver and detach fan duct from system fan. Save system fan.

### 6 Remove PCI Card Guide

- 1 Press in on two blue tabs.
- 2 Pull PCI card guide outward and remove from chassis.

### 7 Remove Processor Air Duct

**NOTE:** The processor air duct only needs to be removed for the DP/WS/BRP configurations. The SC5299UP configuration does not have a processor air duct.

- 1 Remove processor air duct (two screws).  
Note: Save these screws.

### 8 Install Server Board

See your Intel® server board *Quick Start User's Guide* for server board installation instructions and installation of the back panel I/O shield.

Use the mounting screws, bumpers and standoffs (if necessary) that come with your chassis to secure the server board to the chassis.

The standoffs that ship with the chassis need to be adjusted to accommodate the Intel® Server Board S3000AH on a SC5299DP/BRP configuration. Remove standoffs from positions P1, P1, P2, and P2. Move standoffs to positions M, H, 1, and 3. For other configurations, see the *Quick Start User's Guide* that ships with the Intel® server board.

Return to this document when finished.

### 9 Re-install Processor Air Duct

This duct should only be used with Active Thermal Solutions. DO NOT USE with a Passive Thermal Solution.

**Intel® Server Board S3000AH only:** Skip this step. It is not necessary to re-install the processor air duct for this server board.

- 1 Lower processor air duct into chassis and line up with two mounting holes in chassis.
- 2 Attach to chassis using the two screws you saved from Step 7.

D37595-005

