

RADEON™ 9700 SERIES

USER MANUAL

Rev. : A0
Date : 12, 2002
Part No. : 25-10432 -00

Notice

Handling Precautions

Warning:

Static electricity may cause damage to the integrated circuits on the electric device. Before handling any card outside of its protective packaging, ensure that there is no static electric charge in your body.

Observe the following basic precautions when handling the card or other computer components:

- Wear a static wrist strap which fits around your wrist and is connected to a natural earth ground.
- Touch a grounded or anti-static surface or a metal fixture such as a water pipe.
- Avoid contacting the components on add-on cards, motherboards, and modules with the *golden fingers* connectors plugged into the expansion slot. It is best to handle system components by their mounting brackets.

The above methods prevent static build-up and cause it to be discharged properly.

Trademark

All trademarks mentioned in this manual are registered properly of the respective owners.

Handling Precautions

This manual may not, in whole or in part, be photocopied, reproduced, transcribed, translated, or transmitted in whatever form without the written consent of the manufacturer, except for copies retained by the purchaser for personal archival purposes.

Introduction

The RADEON™ 9700 Series graphic accelerators deliver ground breaking 3D graphics performance.

- Powered by the RADEON 9700 Series Visual Processing Unit (VPU).
- First 8-pixel pipeline architecture.
- First to support DirectX 9.0.
- 256-bit DDR memory interface.
- Support for AGP 8X specification.
- First to use pixel shaders to accelerate video.
- Support for Direct 3D® applications.
- Support for OpenGL® applications.
- High resolution in 3D up to 2048x1536.
- Fast 3D gaming.
- Digital flat panel support.
- Supports TV-Out to connect your PC to your TV or VCR.

Features At A Glance

- The RADEON™ 9700 Series includes:
- SMARTSHADER™ II which can realistically create the visual properties of any material, like glass, metal, wood, and produce 3D depth by rendering the object's shadows.
- SMOOTHVISION™ II which provides users with various degrees of jagged edge removal from 3D images, allowing users to configure their own high quality or high performance gaming experience.
- VIDEOSHADER™ which applies real-time noise filtering resulting in crisp clean video output.
- FULLSTREAM™ which removes blocky artifacts from streaming Internet video and provides a sharper image.
- TRUFORM™ technology which makes the curved surfaces of 3D objects look smoother and more life-like.

CATALYST™ Software Suite from ATI

Multiple Displays and 3D Gaming Experience

ATI's CATALYST Software Suite provides multiple display functionality, and the advanced graphic features, such as SMARTSHADER II, for the ultimate 3D gaming experience. For help installing the CATALYST Software Suite, refer to the **Getting Started Guide**.

The CATALYST Software Suite installs the ATI display tabs. These tabs are accessed through the Windows® **Display** Control Panel, through the **Advanced...** button located on the **Settings** tab.

Direct 3D and OpenGL

The CATALYST Software Suite also supports the latest versions of Direct 3D and OpenGL. Many new 3D game titles, and the latest versions of older titles, will virtually come to life as they utilize their advanced Direct 3D or OpenGL features. Gamers can fine-tune their settings for the ultimate experience in 3D image quality or 3D gaming performance.

ATI's Direct 3D and OpenGL tabs are available through the Windows® **Display** Control Panel, through the **Advanced...** button located on the **Settings** tab.

HydraVision™

In addition to the multiple display functionality available with ATI's CATALYST Software Suite, you can also use HydraVision for advanced multi-monitor management. For more information on HydraVision, please refer to the **HydraVision User's Guide** PDF located on your Installation CD.

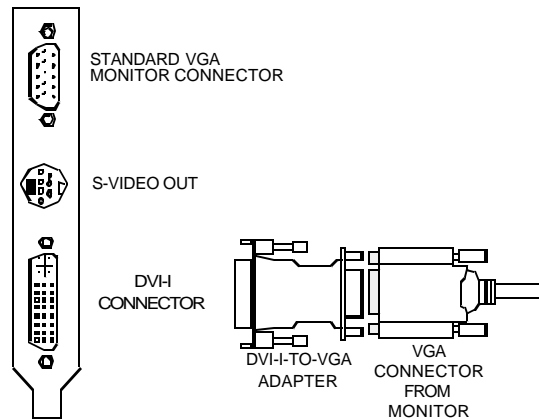
Multiple Displays

Connecting Your Monitor(s)

Your RADEON 9700 Series provides hardware support for one DVI-I monitor or two VGA monitors using the supplied DVI-I-to-VGA adapter. A TV can also be used to expand your desktop by using the S-Video out.

Plug the monitor cable into your card (if you are running multiple monitors, connect their cables to the appropriate connectors), **then turn on the PC and monitor(s).**

To connect a flat panel **directly** to your card, use the DVI-I connector. To connect a VGA monitor to the DVI-I connector, plug the supplied DVI-I-to-VGA adapter into the DVI-I connector, then plug your monitor cable into the adapter, as shown below.



When you use multiple monitors with your card, one monitor will always be **Primary**. Any additional monitor(s) will be designated as **Secondary**.

Display Configurations

Your RADEON 9700 Series graphics accelerator card provides dual display functionality and TV Out. The following table lists the different ways you can connect displays to your card.

Display Configuration	Connector(s) Used	Comments
One CRT display	VGA connector OR DVI-I connector with DVI-to-VGA adapter	CRT: cathode ray tube analog display
One DFP display	DVI-I connector	DFP: digital flat panel display
One TV	S-Video out	The S-Video out can also support a composite connection via the S-Video to Composite adapter
CRT display + TV	VGA connector + S-Video out	Unsupported configuration if the CRT display is attached to the DVI-I connector via the DVI-I- to-VGA adapter
DFP display + TV	DVI-I connector + S-Video out	
CRT display + DFP display	VGA connector + DVI-I connector	
CRT display + CRT display	VGA connector + DVI-I- to-VGA adapter	The DVI-I connector does support a CRT display using the DVI-I-to-VGA adapter
CRT display + DFP display + TV	VGA connector + DVI-I connector + S-Video out	The TV display will receive the image of one of the other two displays.
CRT display + CRT + TV	UNSUPPORTED CONFIGURATION	

CATALYST Software Suite

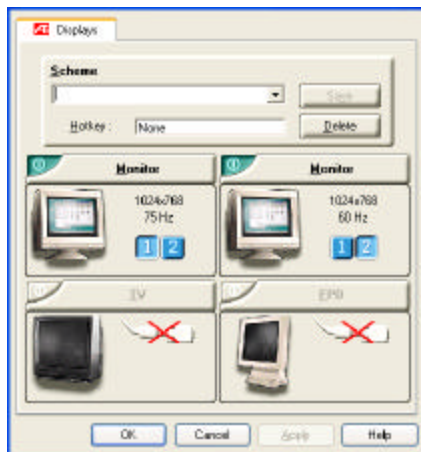
The following section provides an explanation of each ATI tab added to the Display Properties after installing the Catalyst Software Suite.

Note:


Features presented in the following pages may not be supported in all operating systems and/or may appear differently.

ATI Displays Tab

The ATI Displays tab provides multiple monitor features. Here you can enable/disable display devices and swap the assignment of **Primary** and **Secondary** displays.



Enabling/Disabling Secondary Displays

1. Access the Windows® **Control Panel**. Double-click **Display**.
2. Click the **Settings** tab and then the **Advanced...** button.
3. Click the **ATI Displays** tab.
4. Click the enable/disable button  for the display device you want to enable/disable.
5. Click **OK** or **Apply** to save the changes.

Enabling Extended Desktop Mode

1. Access the Windows® **Control Panel**. Double-click **Display**.
2. Click the **Settings** tab.
3. Click the monitor icon for the display onto which you want to extend your desktop.
4. Click **Yes** to enable the selected display.
5. Checkmark the **Extend my Windows desktop onto this monitor** check box (Windows® may automatically place it there).
6. Click **OK** or **Apply** to save the changes.







Dynamic Display Reassignment


You can change the assignment of your **Primary** and **Secondary** display on the fly, without rebooting. However, before you can change the assignment of the **Primary** display, at least one **Secondary** display must be enabled, and Extended Desktop mode must be enabled.

To enable a Secondary display see **Enabling /Disabling Secondary Display on the previous page**.

To enable Extended Desktop Mode see **Enabling Extended Desktop Mode on the previous page**.

1. Access the Windows® **Control Panel**. Double-click **Display**.
2. Click the **Settings** tab and then the **Advanced...** button.
3. Click the **ATI Displays** tab.

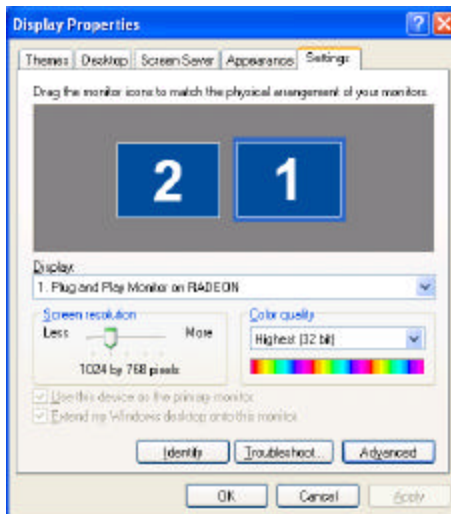
The ATI Displays tab shows you the display(s) that are active. The Primary display has the  button depressed. To change the display assignment, click the Primary display's  button or click the  button of the other display device. In Windows® 2000 clicking the  button will reassign the Primary and Secondary monitors. Clicking the  button creates a clone or mirror image of the Primary display onto the Secondary display. Clicking the  button extends your desktop to a Secondary display located to the right of the Primary display.

Clicking the  button extends your desktop to a Secondary display located below the Primary display.

4. Click **OK** or **Apply** to save the changes.

Virtually Repositioning Your Displays

1. On the **Settings** tab, click and drag the appropriate monitor icon to the desired position. For example, the secondary display can be dragged to the left of the primary display, allowing it to be virtually on the left, as shown below.
2. Click **OK** or **Apply** to save the changes.

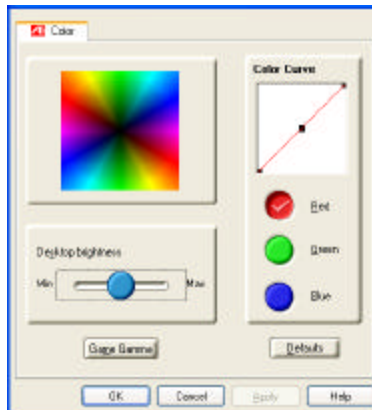


Ratiometric Expansion

Your RADEON 9700 Series card offers ratiometric expansion (or digital panel scaling as it is commonly known). This expands a low resolution image to fill a higher resolution panel. However, ratiometric expansion is only available on the **Primary** display. Therefore, if a flat panel display (FPD) is set as Secondary, the Extended Desktop mode is disabled and the resolution is less than the FPD's native resolution. This causes the FPD to default to center mode.

ATI Color Tab

The ATI Color tab is used to adjust the color settings. You can change the red, green and blue display colors. Desktop brightness and Game Gamma (brightness) can also be changed.



ATI Color Tab

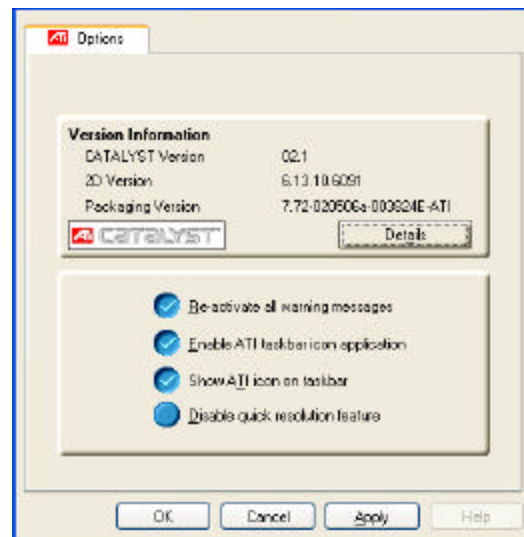
Desktop Brightness	This increases or decreases the brightness of your desktop. The higher the gamma value, the higher the brightness of your display.
Color Curve	This adjusts the selected color (red, green or blue check button) by moving the color curve with your mouse.
Game Gamma button	This accesses Game Gamma Properties.
Defaults button	This allows you to reset the desktop brightness and color

Clicking the **Game Gamma** button accesses the Game Gamma Properties.

Game Gamma Properties	
Red/ Green/ Blue sliders	These controls allow you to increase or decrease the color brightness of Direct 3D and OpenGL games played in full screen mode.
RGB Lock	Uncheck this to adjust the RGB sliders individually. Check this to adjust all three sliders at the same time.
Defaults button	This allows you to reset the Game Gamma settings to

ATI Options Tab

The ATI Options tab provides detailed driver information and access to the card's specifications. You can also enable or disable the ATI taskbar icon.



ATI Options Tab	
Version Information	Provides the Catalyst version number, 2D version number and the driver build information.
Details button	Provides access to the Details tab which lists the card's hardware details and driver information.
Reactivate all warning messages	This allows you to reactivate any disabled graphics warning messages.
Enable ATI taskbar icon application	Unchecking this allows you to disable the ATI taskbar applications and removes the ATI icon from your system tray.
Show ATI icon on taskbar	Unchecking this allows you to remove the ATI icon from your system tray without disabling the ATI icon applications.
Disable quick resolution feature	Quick resolution feature is accessible by left-clicking the ATI icon in the system tray. Checking this option disables the feature.

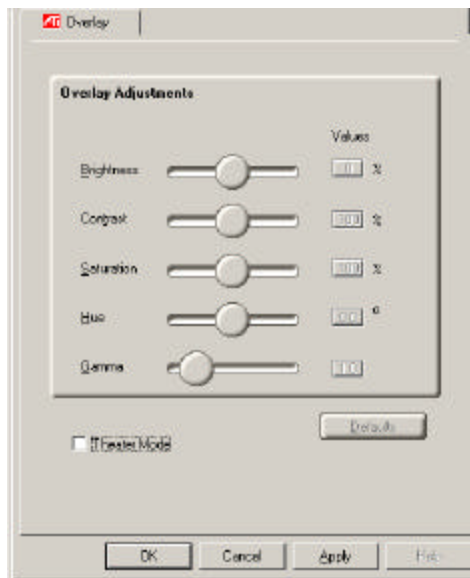
Clicking the **Details** button provides graphics card, graphics driver and system information.

ATI Overlay Tab

The ATI Overlay tab allows you to configure the brightness, contrast, saturation, hue and gamma properties of your video overlay.

Video Overlay

Video overlay allows for the viewing of full-motion video on your PC. However, there is only one video overlay, which is only available on the **Primary** display. The video overlay controls are automatically activated during playback of any video file type that supports overlay adjustments.



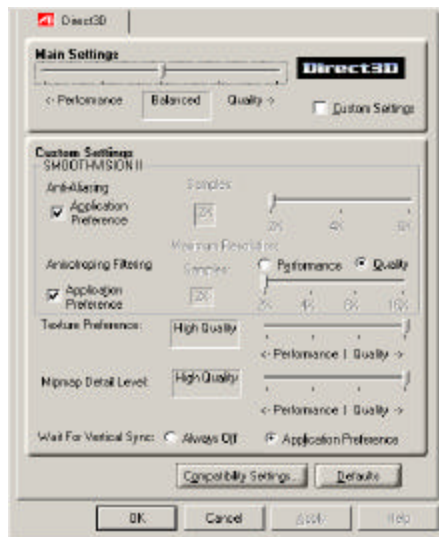
ATI Overlay Tab	
Brightness	Use this slider to adjust the brightness of the video image.
Contrast	Use this slider to adjust the contrast in the video image.
Saturation	Use this slider to adjust the vividness of the color. Sliding it all the way to the left removes all color and produces a black and white picture.
Hue	Use this slider to adjust the pureness or tint of the red, green and blue components of the color.
Gamma	Use this slider to adjust the overall intensity of the video image.
Defaults button	This allows you to reset the Overlay settings to default values.
Theater Mode	This allows you to display video playback in full screen on a secondary monitor, if available and enabled.

Direct 3D Control Panel

Using this tab, gamers can fine-tune the settings of their Direct 3D games.

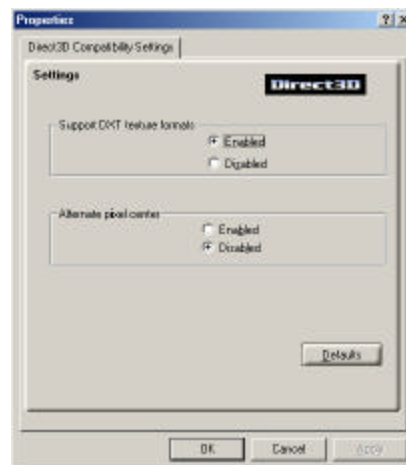
Main and Custom Settings

The **Main Settings** allows you can maximize overall performance by moving the slider to the left, or maximize overall image quality by moving the slider to the right. Selecting **Custom Settings** disables the Main Settings slider allowing you to fine-tune the Direct3D settings of your RADEON 9700 Series.



Wait for Vertical Sync	Wait for vertical sync will lower the frame rate of full screen games but reduce the image tearing that can occur with the higher frame rate. Selecting Application Preference allows the application to decide whether or not it should display its frames at the refresh rate of the monitor. Selecting Always On allows the application to run at its highest possible frame rate, regardless of the monitor's refresh rate which is typically less than the frame rate at which the application will run.
Compatibility Settings button	This button allows you to access advanced settings that can solve compatibility issues for a few specific Direct 3D applications.
Defaults button	This button allows you to reset the Direct3D settings to default values.

Direct 3D Compatibility Settings



Support DTX texture formats	Enabling this allows applications to use this kind of texture format. There are a few applications that can only support a limited number of texture formats. By selecting Disabled, the driver will not support DTX texture formats, thus reducing the number of texture formats supported.
Alternate pixel center	This may eliminate problems with some Direct 3D games which display vertical and horizontal lines around textures, or text that appears incorrect. However, this setting should only be used if you are experiencing the symptoms mentioned, as it may cause problems with other games.
Defaults button	This button allows you to reset the Direct 3D Compatibility Settings to default values.

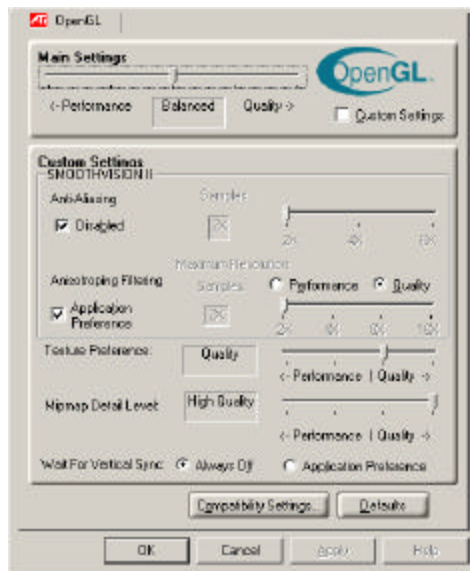
This Page Left Blank for Note

OpenGL Control Panel

Using this tab, gamers can fine-tune the settings of their OpenGL games.

Main and Custom Settings

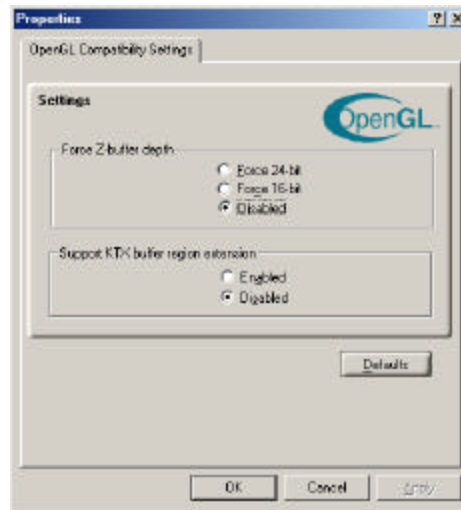
In the **Main Settings** you can maximize overall performance by moving the slider to the left, or you can enhance overall image quality by moving the slider to the right. Selecting **Custom Settings** disables the Main Settings slider allowing you to fine-tune the OpenGL settings of your RADEON 9700 Series.



Main Settings slider	This allows you to emphasize what kind of application experience you'd like to have. Moving the slider to the left will maximize application performance, while moving the slider to the right will provide excellent 3D image quality. Moving this slider from one position to the next changes the individual Custom Settings sliders found below.
Custom Settings checkbox	When Custom Settings is checked, the Main Settings slider is disabled, allowing you to move each individual slider in the Custom Settings section below. Setting the individual sliders gives you complete control over your application experience. Using Custom Settings is recommended for advanced users only.
SMOOTH VISION II checkbox	Smooth-Vision II (Anti-Aliasing) improves image quality by removing jagged edges from 3D images, resulting in smoother, more natural-looking objects.
SMOOTH VISION II slider	Smooth-Vision II (Anti-Aliasing) can be applied using different sample patterns and sample points such as 2X, 4X, or 8X. Moving this slider to the right increases sampling to provide the most realistic 3D image.
SMOOTH VISION II Anisotropic Filtering checkbox	Anisotropic filtering uses a texture filtering technique that blends multiple texture samples together. Performance will result in high quality textures, with a negligible reduction in the application's performance.
SMOOTH VISION II Anisotropic Filtering slider	The number of samples taken when anisotropic filtering is performed can vary. By moving this slider to the right, as the number of samples taken increases, the quality of the final image increases significantly. 16X provides extremely detailed, crisp-looking images as a result of the largest number of texture samples possible.

Texture Preference slider	Selecting this decides whether your application should use high quality or high performance textures. Moving the slider to the right delivers the highest quality experience. Moving the slider to the left emphasizes a high performance solution while still providing good visuals.
Mipmap Detail Level slider	This will allow you to choose the texture quality of the mipmaps the application will use. Mipmaps are a collection of different sized textures of the same image. As the user moves closer to a 3D object the image quality should increase, requiring a higher quality texture of the same image. The base mipmap is the highest quality texture, and all subsequent mipmaps are smaller sized textures of the same image. Moving the slider to the right selects a higher quality base mipmap, delivering the highest quality application experience. Moving the slider to the left selects a lower quality mipmap, delivering the highest application performance.
Wait for Vertical Sync	Wait for vertical sync will lower the frame rate of full screen games but reduce the image tearing that can occur with the higher frame rate. Selecting Application Preference allows the application to decide whether or not it should display its frames at the refresh rate of the monitor. Selecting Always Off allows the application to run at its highest possible frame rate, regardless of the monitor's refresh rate which is typically less than the frame rate at which the application will run.
Compatibility Settings button	This button allows you to access advanced settings that can solve compatibility issues for a few specific OpenGL applications.
Defaults	This button allows you to reset the OpenGL settings to default values.

OpenGL Compatibility Settings



Force Z-buffer depth

This allows you to explicitly set the Z-Buffer depth. Most applications will work best when Disabled is selected.

Support KTX buffer region extension

Enabling this feature allows rapid updates of those portions of your screen that have changed. Note that most applications will not be affected by activating this feature.

Defaults button

This button allows you to reset the OpenGL Compatibility Settings to default values.

Using TV Out

View your PC display on a TV

Your RADEON 9700 Series has TV Out capability. You can attach your graphics card to a TV and monitor at the same time. Or you can connect it to your VCR and record your monitor's display.

TV display is ideal for playing games, giving presentations, watching movies, and browsing the Internet. The following tips will help you get the most out of your TV Out feature.



**IMPORTANT INFORMATION
for European Customers**

Some PC monitors in Europe cannot be used simultaneously with TV display. When you enable TV display in Europe, the refresh rate for the monitor and TV is set to 50Hz. Some monitors may not support this refresh rate and could be damaged.

- Please check the documentation supplied with your monitor to see if your monitor supports a refresh rate of 50Hz.

If your monitor does not support 50 Hz (or if you are not sure), then turn off your monitor before turning on your PC when using your TV as a display.

For information on disabling TV display, see To enable and disable the TV display on next few pages.

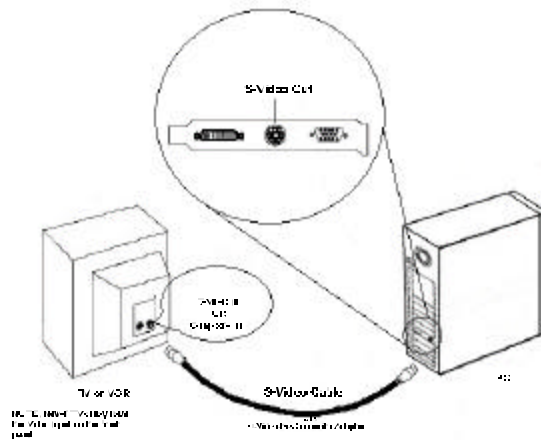
Some TVs in Europe may use a SCART connection. If you use SCART, please read Using SCART connectors for European TVs on next few pages before attempting to connect your PC to your European TV.

Connecting to a TV or a VCR

To connect your RADEON 9700 Series card to a TV or a VCR, use an S-Video cable. However, most TVs (and VCRs) have a Composite video input, in which case you can use the supplied S-Video-to-Composite video adapter. If your TV has cable input only, you can connect your graphics card to your TV through your VCR or an RF modulator (available in most electronics stores).

Connecting Your S-Video Out to a TV or VCR

1. Turn off your PC and your TV (or VCR).
2. Ensure your card was installed correctly as per the Getting Started Guide.
3. Determine if your TV (or VCR) has a S-Video or Composite video connection.
4. Looking at the back of your PC, locate your S-Video Out. Using a S-Video cable or the supplied adapter cable, attach one end of the cable to your graphics card and the other to your TV (or VCR). Refer to the illustration for further help.
5. Turn on your TV (or VCR) then your PC.




Starting Windows® with TV Display Enabled

The TV screen may become scrambled during the initial Windows® logo display. This is only a temporary effect and your screen will be restored within a few seconds.

During start up, your RADEON 9700 Series will go through a sequence of mode settings, during which your TV display will remain blank. This process takes only a few seconds and helps program the TV display.

To Enable/Disable The TV Display

1. Access the Windows[®] **Control Panel**. Double-click **Display**.
2. Click the **Settings** tab and then the **Advanced...** button.
3. Click the **ATI Displays** tab. Click the **TV** button.
4. Click the enable/disable button. 
5. Click **OK** or **Apply** to save the changes.

Using and Adjusting TV Out

For information about how to use TV display, right click the ATI taskbar icon, point to Help, then point to ATI Television Display.

How TV Display Cannot Be Used

A TV cannot be left connected to the graphics card if two analog monitors are connected to your RADEON 9700 Series, even if the TV is off and not enabled in the software.

An analog monitor connected to the DVI-I connector cannot be left connected to your RADEON 9700 Series card when TV out is enabled. In both cases, your RADEON 9700 Series will become overloaded, resulting in a dim image on all devices.

Using a Monitor vs. Using the TV Display

Using your TV for your PC's display is ideal for playing games, giving presentations, watching movies, and browsing the Internet. However, the display on your monitor may change or look squashed. This occurs because the display adjusts to fit the dimensions of your TV. To correct the monitor's display, use the monitor's control buttons to adjust its display size and position.

Some single frequency monitors may not work with TV display enabled. If you experience problems when TV display is enabled, disable TV display to restore your monitor's display.

Adjusting Monitor Display

The size of the display on your monitor may be smaller and not perfectly centered when you have TV display enabled. These effects are caused by the changes required to provide a proper display on the TV.

Use the controls available on the Adjustments tab on the Monitor Properties page (accessible by clicking on the Monitor button on the ATI Displays tab) to adjust the display on your monitor only. Click on the TV button to adjust the TV display only.

Viewing Text on a TV

A TV is designed primarily to show moving, rather than static, images. The large dot pitch of a TV (which is fine for moving video) will yield poor quality static images such as text.

The small text sizes commonly used for PC desktops can appear blurred or unclear on a TV. You can compensate for this by using larger fonts.

To Use Larger Display Fonts


1. Access the Windows® **Control Panel**. Double-click **Display**.
2. For Windows® XP, click the Appearance tab. For Windows® Me, Windows® 2000, click the Settings tab, the Advanced... button, then the General tab.
3. In the Font Size box, select the size you want your displayed fonts to be.
4. Click Apply. If prompted, click Yes to restart your PC.

Reducing Edge Distortion

When using a TV for your PC's display, you may see some edge distortion on the left and right side of your TV screen. This effect depends on your TV and the PC application you are running.

To reduce edge distortion, you can increase the TV display's horizontal size.

To Increase the Horizontal Size

1. Access the Windows® Control Panel. Double-click Display.
2. Click on the Settings tab and then the Advanced... button.
3. Click on the ATI Displays tab.
4. Click on the TV button.
5. Click the Adjustments tab.
6. In the Screen Size section, click on the plus (+) button beside the horizontal arrowheads  to increase the horizontal size of the TV display.
7. Click OK or Apply to save the changes you have made.

You can also reduce edge distortion by increasing the TV's contrast.

To Increase the TV Contrast

1. Access the Windows® Control Panel. Double-click Display.
2. Click on the Settings tab and then the Advanced... button.
3. Click on the ATI Displays tab.
4. Click on the TV button.
5. Drag the Contrast slider to the right to increase the contrast.
6. Click OK or Apply to save the changes you have

made.

Changing Display Configurations

If you move your PC to a place where you are using TV display only, make sure that you have the TV display feature enabled.

You can set your display resolution as high as 1024x768. However, higher resolutions will result in a virtual desktop. If a TV is your only display device and a higher mode is selected, the display on your TV will disappear.

Using Games and Applications

Some older games and applications may program your RADEON 9700 Series card directly, to run under a specific display mode. This may cause your TV display to turn off automatically or become scrambled (the PC monitor will not be affected). Your TV display will be restored once you exit the game or if you restart your PC.