



FIC SlateVision  
**Tablet PC**  
Inspiration, Anytime Anywhere



# Tablet PC

## Inspiration, Anytime Anywhere

### ► The FIC SlateVision Tablet PC

The new SlateVision Tablet PC from First International Computer, Inc. (FIC) is the very latest "go anywhere" PC. Developed to take advantage of the revolutionary new Microsoft® Windows® XP Tablet PC Edition operating system, the FIC SlateVision Tablet PC is a taste of tomorrow's technology today.

The SlateVision Tablet PC is designed to operate anywhere without the restriction of a keyboard and mouse. Exciting Ink technology allows users to write directly on the screen with a pen although keyboard and mouse can be used if required.

Much more versatile than your laptop and just as powerful as the PC on your desk top, the SlateVision Tablet PC is the next step in the evolution of the personal computer. Now you can take your office anywhere, bring your business to your customers and connect to the rest of the world without wires.



#### **In the Office**

In a docking station the FIC SlateVision Tablet PC can be used exactly like a desktop PC with a mouse and keyboard. The docking station has 2 x USB ports, 1 x RJ45 jack, audio jack, VGA connector and room for a slim CD ROM drive.



#### **Mobile Office**

The FIC SlateVision Tablet PC can also be used in a lightweight cradle with keyboard, ideal for use on the train, plane, in a coffee shop or on a table at home.



#### **On the Move**

For ultimate mobility the SlateVision Tablet PC can be used without mouse or keyboard and it is small and light enough to use in almost any situation.



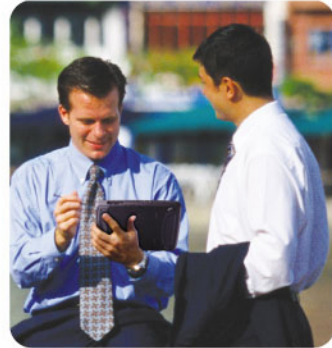
# FIC SlateVision

## Inspiration, Anytime Anywhere

### ► Applications:

#### ► Mobile Office and Business POS:

The FIC SlateVision Tablet PC is so portable, you can use it anywhere; on the train, on the plane, in the factory or at your desk. Because it is designed to run standard PC applications, the Tablet PC will run all the same software as the PC on your desk and more. Now you can take the office with you wherever you go and take your business to your customers, the possibilities are endless. Take orders digitally anywhere, update your stock records or shipping register in real time, conduct surveys or collect data in the field. Uploading and sharing data captured on the FIC SlateVision Tablet PC is easy, simply connect to a network with the built-in 56K modem, 10/100 Ethernet port or 802.11b Wireless LAN.



#### ◀ Meetings and Presentations:

Exciting Ink technology is the ideal way to take notes in meetings. Just use the Tablet PC like a pen and paper, no need for keyboards and mouse. Ink technology can also be used to make comments on Microsoft® Office documents or even create handwritten Outlook e-mail. The Tablet PC is also ideal for meeting presentations. Just connect a projector to the VGA interface and begin your PowerPoint presentation. Presentation slides can even be updated during the presentation itself using the EMD pen.

#### ► Education:

Ink technology is the convenient new way to take notes and update documents in the class room. There's no need to worry about disturbing your neighbor either; the FIC SlateVision Tablet PC is so quiet it can be used anywhere. All your notes and data can be stored on your Tablet PC so you won't need to carry all your books everywhere.



#### ◀ Mobile Design Tool:

The power of the FIC SlateVision Tablet PC and the quality of the display make it an excellent choice for designers and design students. The FIC SlateVision Tablet PC will run CAD software just like the PC on your desk top and you can take it with you when need to work away from the office.

#### ► Entertainment:

If you like to read or listen to music the FIC SlateVision Tablet PC offers exciting new ways to do both. The on-board audio facility (Realtek ALC200 AC'97 Codec) will play your favorite MP3s and the 10.4" TFT LCD XGA 1024x768 screen is an ideal way to view e-books. If you like to relax chatting with friends on the internet or browsing websites, the FIC SlateVision Tablet PC can do that too. Remember, a Tablet PC can run all the same software as your desk top PC and you can connect to the internet with the on-board 56K modem, 10/100 Ethernet port or even 802.11b wireless LAN.



## ► Features:



### **Advanced Operating System:**

Windows® XP Tablet PC Edition is a superset of Windows® XP Professional and is the most advanced Microsoft® operating system to date. Tablet PC Edition features all the power and functionality of Windows® XP Professional and more. Standard Windows® XP compatible applications will all run under Tablet PC Edition and revolutionary pen based computing technology offers users a completely new way to interact with the computer.



### **The most mobile PC ever:**

The Tablet PC is a new concept in personal computing. Designed to go anywhere and still provide all the power and functionality of the PC on your desk top, the Tablet PC is the truly practical alternative to the laptop. Advanced Ink technology and voice recognition software allows users to dispense with keyboard and mouse for the first time. Tablet PCs also support hot docking which means users can grab and go even when the device is in a docking station. Integrated 802.11b, wireless LAN means that connecting to a network is possible, even when away from the desk.



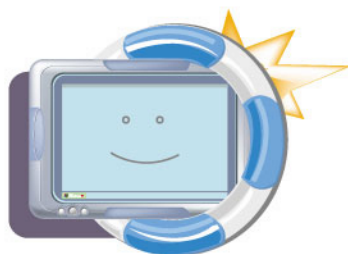
### **Handwritten notes:**

The handwriting recognition capabilities of the Tablet PC mean that it can even be used for note taking in meetings or lectures. Windows® Journal lets the user create and organize handwritten notes as if they were written on paper. Ink technology even allows handwritten notes to be converted to conventional text if necessary. Handwriting can also be searched using Ink technology to find exactly what is needed quickly and efficiently.



### **A more natural way to interact:**

The addition of an intuitive pen and paper user interface has meant that Tablet PCs can be operated without a keyboard or mouse. All the operations that once required a mouse can now be carried out with the digital pen and input panel. Opening and closing applications, selecting text, displaying menus, dragging and dropping can all be done with a tap of the digital pen on the input panel.



### **The highest level of protection for your critical data:**

Windows® XP Tablet PC edition offers all the data protection features of Windows® XP Professional, including the Encrypting File System security feature and the access control feature. Tablet PCs also support secure log on using a single CTRL+ALT+DEL hardware button.



# FIC SlateVision

## I/O and expansion:

**Expansion:** The FIC SlateVision Tablet PC has a type II PCMCIA Card Slot with Cardbus support for easy expansion.

**Networking:** Connecting to a network is simplicity itself with the FIC SlateVision Tablet PC. Each unit has an on-board 56K modem, a 10/100 Ethernet LAN interface and 802.11b wireless LAN functionality. With wireless LAN, connecting to your office network is as easy as walking through the door. You can even give your SlateVision Tablet PC Bluetooth™ or GPRS functionality via USB port or PCMCIA card.

**Peripherals:** The FIC SlateVision Tablet PC supports USB 1.1 and IEEE 1394 interfaces and even IrDA 1.1 (FIR 4Mbps). All the latest high speed peripherals including scanners, web cams, camcorders etc can be supported.



- 1 Ist Menu Button
- 2 Direction Button
- 3 Ctrl + Alt + Del
- 4 Battery
- 5 IDE
- 6 Power
- 7 Slim Stylus Pen

- 8 USB port
- 9 IEEE 1394
- 10 Reset
- 11 Power Button
- 12 Lock

- 13 DC-in
- 14 Connector to Docking
- 15 Microspeaker
- 16 Headphone
- 17 Mini VGA port

- 18 PCMCIA
- 19 RJ-45
- 20 RJ-11
- 21 IrDA

## ► Specification:

- Transmeta Crusoe TM5800 CPU with clock speed up to 1GHz
- 10.4" TFT LTPS XGA 1024 x 768 screen, 16 bit color, 124dpi
- Electro Magnetic Digitizer (EMD) pen, 133 samples rate per second, 1000 dpi resolution with hover support (Extra emergency slim EMD pen provided)
- 128MB DDR memory on motherboard plus 1 DIMM slot up to 512MB
- 2.5" HDD, ATA 66/100, 20GB or more, user upgradeable
- Built-in AC'97 Audio Codec (built-in speaker)
- 2 x USB 1.1 ports
- IEEE 1394 port
- IrDA 1.1 (FIR 4Mbps)
- Mini VGA port
- Headphone and microphone jacks
- 1 x type II PC-Card Slot with Cardbus support
- Built-in V.90 Modem
- Built-in WLAN 802.11b (optional)
- Built-in 10/100 Ethernet LAN
- External power adapter, Auto sensing, Max 60W.  
100-240V AC input, 19V DC Output
- 6 Cell, 3600mAh, lithium-ion battery, approx. 4.5 hrs battery life, 2.5-3 hrs charging time
- Dimensions: 286 x 216 x 27 mm
- Weight: 1.45 Kg



## ► Accessories:



• Docking Station



• Power Adapter



• Mini VGA Cable



• Electro Magnetic Digitizer (EMD) pen



### First International Computer, Inc.

Tel: 886-2-8751-8751 Fax: 886-2-8751-8851  
<http://www.fic.com.tw> E-mail: [marketing@fic.com.tw](mailto:marketing@fic.com.tw)

\* FIC, the FIC logo are registered trademark of First International Computer, Inc.  
 \* All other company and product names may be trademarks of their respective companies.  
 \* All specifications are subject to change without notice.

