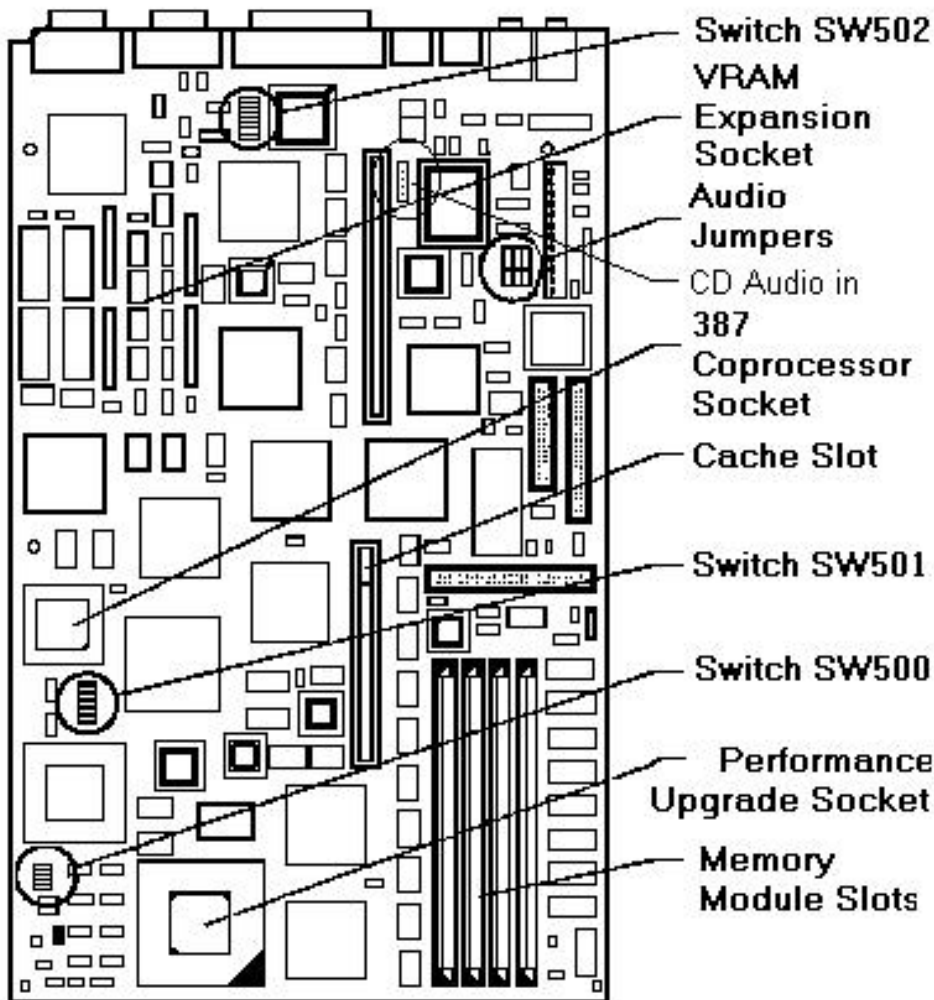


Deskpro 4/66i

Service Considerations

COMPAQ DESKPRO/i PERSONAL COMPUTER



SW500				
Switch	385	486SX	487SX OverDrive™	486DX 486DX2
S1	OFF	OFF	OFF	ON
S2	ON	OFF	ON	OFF
S3	OFF	OFF	ON	ON
S4 (33MHz)	OFF	OFF	OFF	OFF
E4 (25MHz)	ON	ON	ON	ON

SW501				
Switch	385	486SX	487SX	486DX 486DX2
S1	OFF	ON	ON	ON
S2	OFF	ON	ON	ON
S3	OFF	ON	ON	ON
S4	ON	OFF	OFF	OFF
S5	ON	OFF	OFF	OFF
S6	ON	OFF	OFF	OFF

SW502		
Switch	Default	Function
S1	OFF	Enables video graphics controller
S2	OFF	Allows configuration changes
S3	OFF	Allows diskette read/write capability
S4	OFF	Reserved
S5	OFF	Allows power-on password security feature
S6	OFF	Reserved

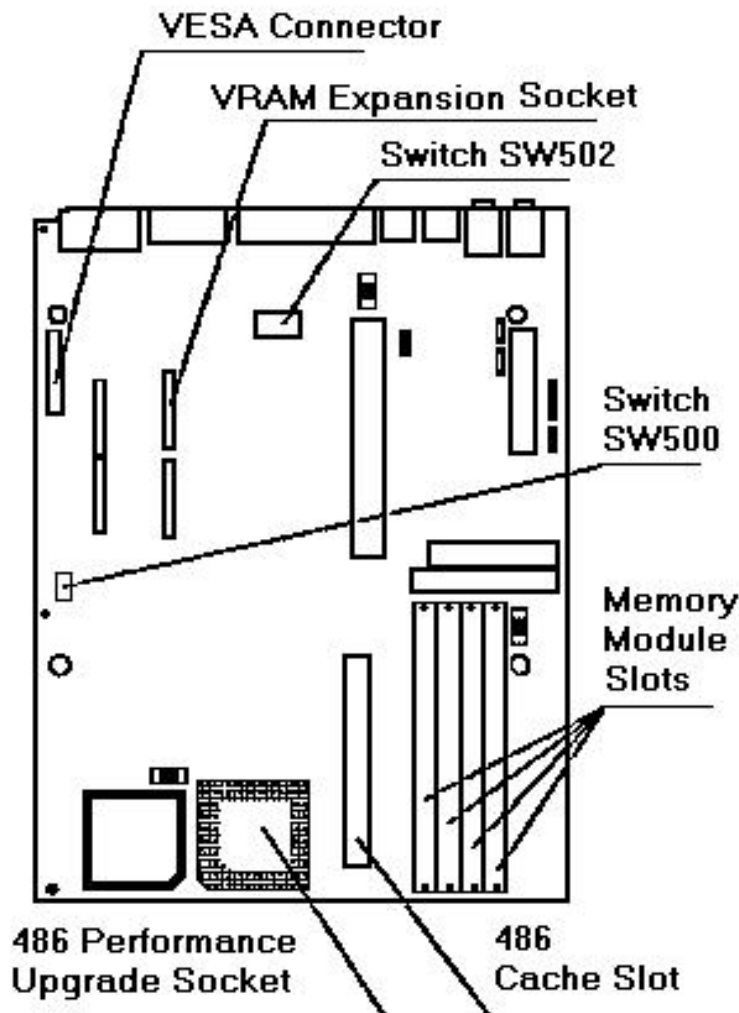
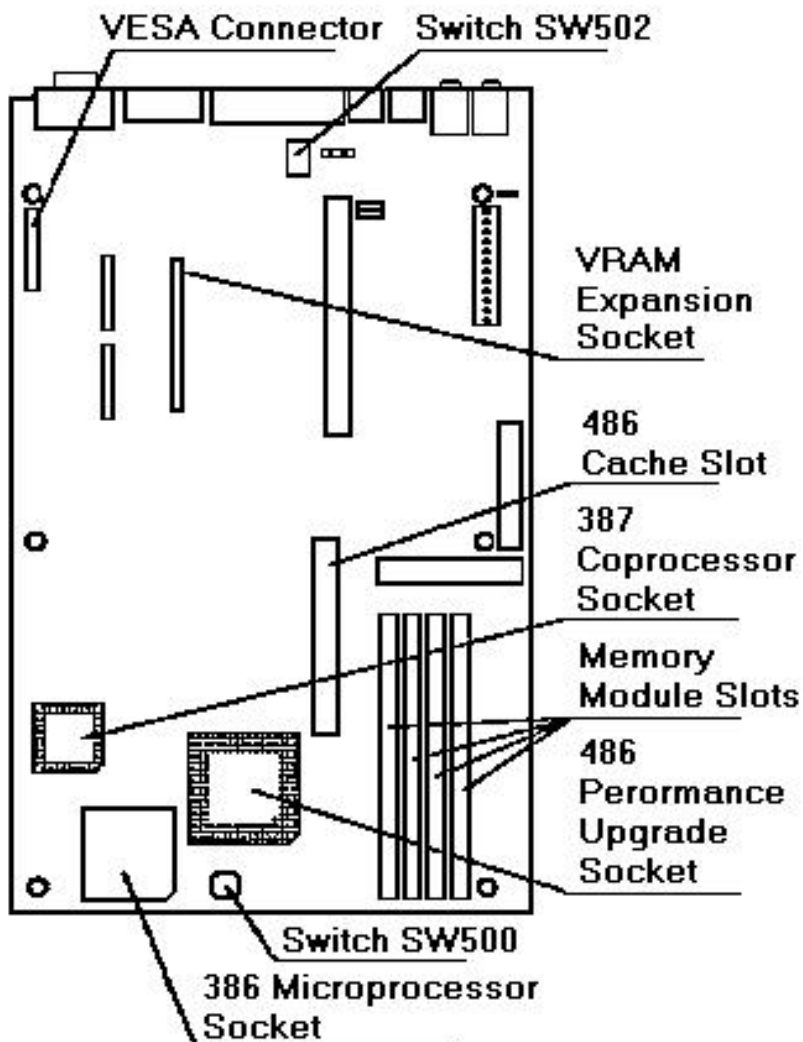
Audio System Configuration Jumpers			
Interrupts	E1		IRQ11
	E3		IRQ7
	(Default) E6		IRQ6
DMA Channels		Pin 1-2	Pin 2-3
0	E4	Capture	Playback
1	E7 (*Default)	Capture	*Playback
3	E8	Capture	Playback
Address Range		Ea	006h-006h
			S34h-S37h (Default)
Audio		E2	Enable (Default)
			Disable

CAUTION
Do not operate the computer with the system unit cover removed.

141230-003

OverDrive™ is a trademark of Intel Corporation.





Switch SW500

Switch	386 486SX *	486SX Upgrade	OverDrive	486DX 486DX2
S1	OFF	OFF	OFF	ON
S2	ON	OFF	ON	OFF
S3	OFF	OFF	ON	ON
S4 (33MHz)	OFF	OFF	OFF	OFF
S4 (25MHz)	ON	ON	ON	ON

* When upgrade socket is vacant.

Switch SW502

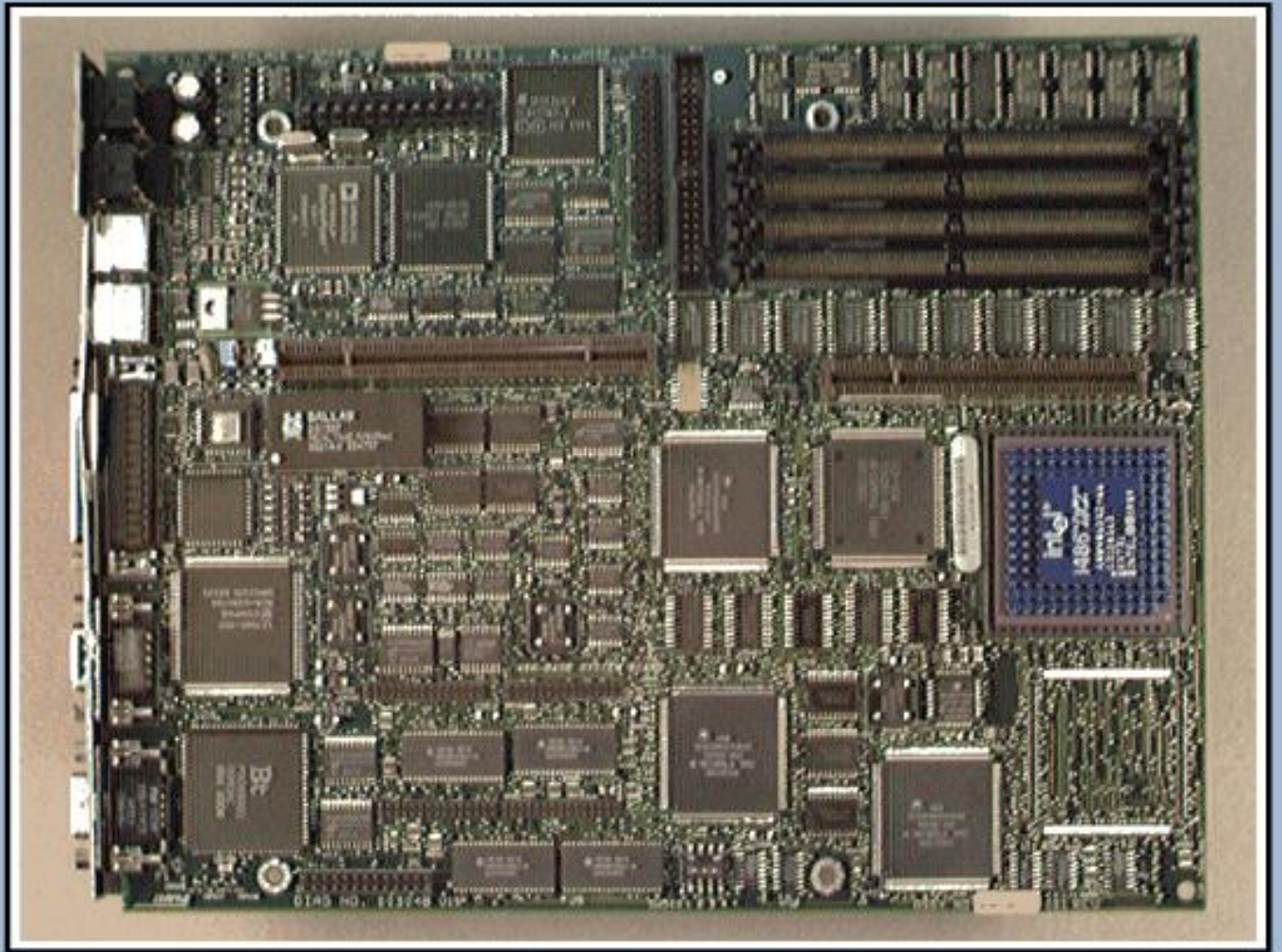
Switch	Default *	Function
S1	OFF *	Enables video graphics controller
	ON	Disables video graphics controller
S2	OFF *	Allows configuration changes
	ON	Prevents configuration change
S3	OFF *	Allows diskette read/write capability
	ON	Prevents diskette write capability
S4	OFF *	Reserved
S5	OFF *	Allows power-on password security feature
	ON	Clears system password
S6	OFF *	Prevents Flash ROM updates
	ON	Allows Flash ROM updates

CAUTION

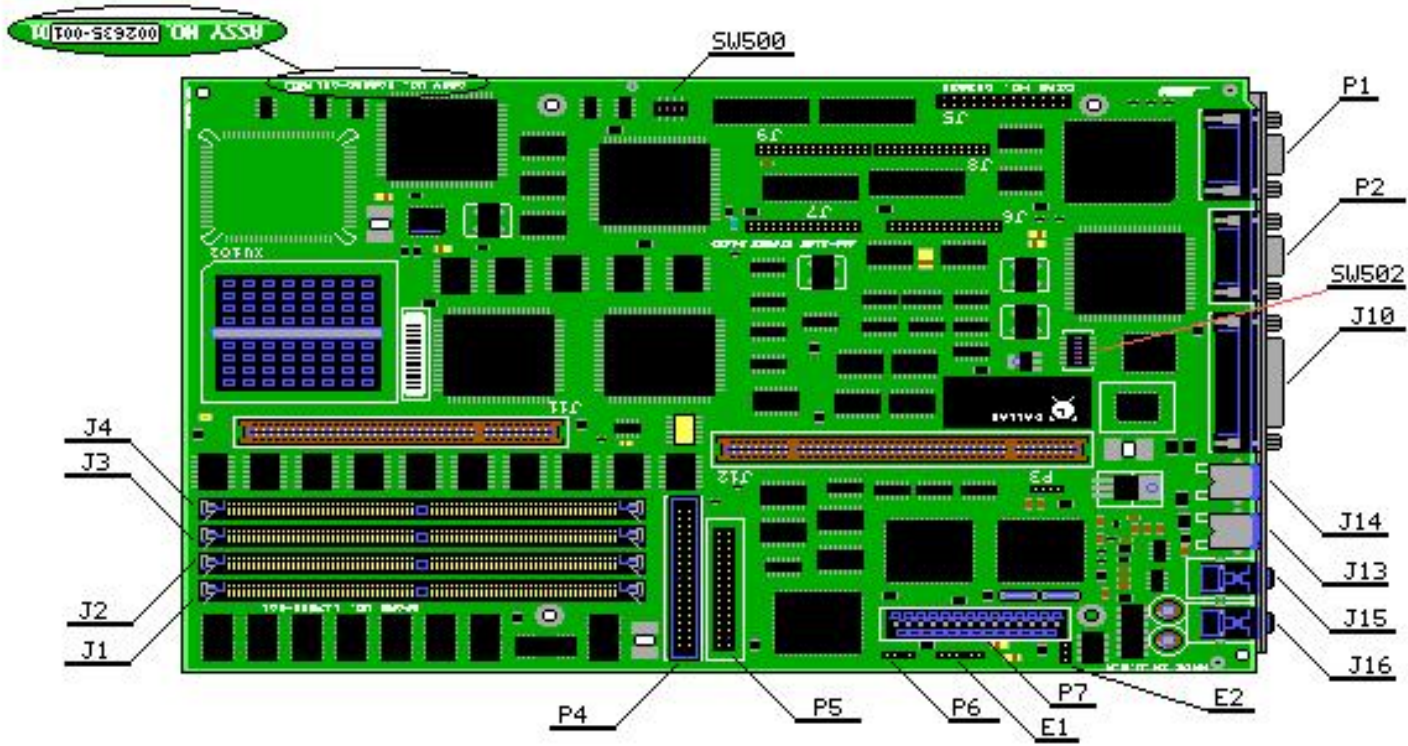
Do not operate the computer
with the system unit
cover removed.



141450-001

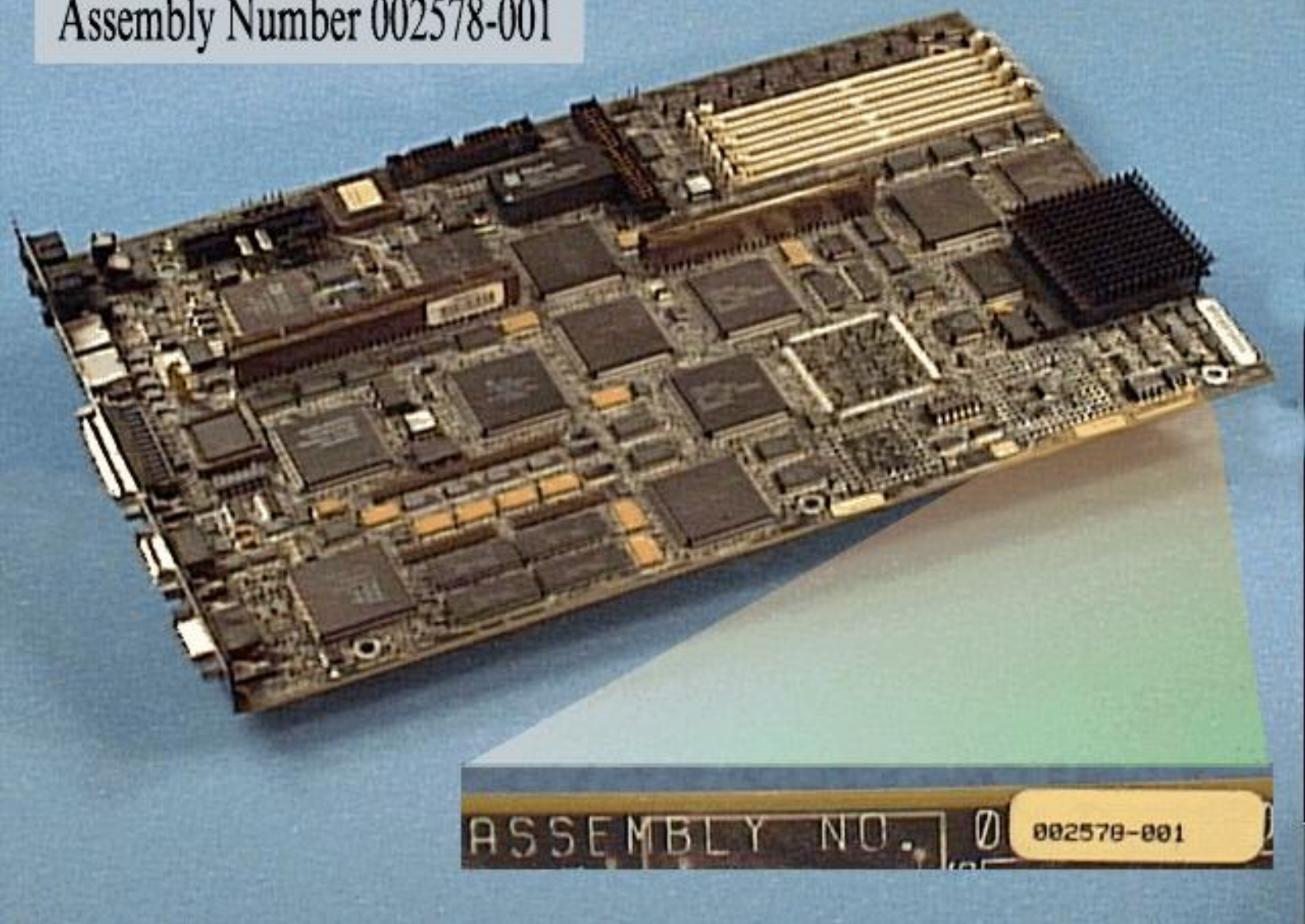


4/66i Processor Board (Advanced Graphics) (Assy No. 003053-001)



Assy No. 002635-001

Assembly Number 002578-001



ASSEMBLY NO. 002578-001

Deskpro i

- Video - Integrated: [Qvision, Qvision 1024/i](#).
- (1) IDE HD controller.
- (1) Serial.
- Bi-Directional parallel.
- Audio - Integrated Compaq Business Audio on assembly [002566, 002569, 002572, 002575, 002578](#).
- Memory - [72pin, 80ns, gold, parity SIMM's](#).
- Units may not auto configure hard drives after the CMOS is cleared.
- The first revisions of the system boards required ROM chip replacement for the BIOS upgrades. The newer units used flash ROM.
- 386 processor based units had both a math coprocessor socket and an overdrive processor socket.
- Second generation 486SX-25 units had a soldered down CPU (Plastic Quad Flat Pack-PQFP). A math coprocessor socket was supplied for math coprocessor, VersaChip, and Intel ODP processors.
- Configuration codes HCP, HCQ, HCR, HCS, HCT do not have a VESA connector.
- User will have to specify diskette type before formatting - 3.5" floppy not media auto sensing.
- TechInfo Config Codes [386 units, 468 units](#).
- [QRG Vol 1](#)

Compaq QVision 1024/I Specifications

Implementation	Prolinea 386 and 486 units, Deskpro XE, Prosignia, Systempro, Proliant, LTE Elite and Lite Family (in SmartStation, Expansion Base), Portable 486 Family
<u>Video Drivers</u>	
Controller	QVision 1024/I
Chipset 1st	Victory VCR
Chipset 2nd and last Generation	<u>V32</u>
RAMDAC	BT 484
Bus/ Slot Type	ISA
Data Path	32 Bit
Memory	
Type	VRAM
Speed	70ns
Standard 1st Generation	512KB
Standard 2st Generation	512KB
Standard Last	1MB
Optional /1st and 2nd Gen.	512KB
Optional /Last	1MB
Max 1st&2nd / Last	1MB / 2MB
Controller Clock Speed	42 MHz
Max Vertical Refresh Rate	75 Hz at 640 x 480
Max Horizontal Scan Rate	57.5KHz at 1024x768
Video Feature Connectors	
VESA Feature Connector	No
VAFC (VESA Advance Feature Connector)	None
<u>VGA Passthru Connector</u>	Yes

Max Resolutions / Colors

Resolution	Colors	Video Memory
1024x768	65,536	2 MB
1024x768	256	1 MB
1024x768	16	512 KB
800x600	65,536	2 MB

800x600	65,536	1 MB
800x600	16	512 KB
640x480	16.7M	2 MB
640x480	16.7M	1 MB
640x480	256	512 KB

QVision/QVision 1280/ Advanced VGA

Implementation: Deskpro M, I, XE, XL; L; Contura 386 & 486, LTE Lite, Portable 486, SystemPro,LT, XL, Deskpro and ProLinea PCI-Enhanced models

Click on a SoftPaq filename to visit the Compaq Online Site.

	SOFTPAQ	VERSION
AutoCad Drivers	SP1080	2.21
OS/2 2.X & 3.0 Drivers	SP2747	2.39
VESA Drivers	SP1728	1.13
Windows 3.1 Drivers	SP1734	7.70
Windows NT 4.0 Drivers	SP2732	3.00 H
Windows NT 3.5 Drivers	SP1322	2.30 A
Windows NT 3.51	SP2751	2.52 H
Windows 95 Drivers	SP2894	1.52 B

V32 ASIC Specifications

Engine Accelerations	
BitBLT	Yes
Line Draw	Yes
Polygon	No
3D	No
Supported Buses	ISA, EISA
Maximum Resolution	1280 x 1024

VGA FEATURE CONNECTOR (FC) - (VGA Pass Through Connector)

Features

- 8 - Bit data transfer
- 640 x 480 max resolution
- 256 max colors
- Single attachment (i.e. one video card only can connect to the graphics system)

Benefits

- Provides an industry standard interface between video and graphics
- Enables video in a window

The VGA pass through connector is most commonly used on consumer and education market Pcs. It is used to pass through video from a TV tuner card or NTSC/PAL (VCR) type application.

The VGA connector is not useful beyond 256 colors at 640 x 480 resolution because of limited bandwidth.

The VGA Feature Connector allows the VGA signals to be accessed by third-party high-resolution graphics or video boards. This VGA pass-through feature also allows the use of a single monitor when using high-resolution graphics boards that are not VGA compatible.

This connection is physically a 26 pin connection, with pinouts defined by VESA. This connector provides a more industry standardized hardware solution for pass thru capability. The VFC interface only supports VGA graphics pass thru capabilities.

The VFC interface is enabled only in VGA modes because the feature connector, by definition from VESA, sits on the 8 bit wide VGA data path running between the Video ASIC and the Video DAC.

Integrated Audio Models Matrix

Integrated Audio Models	Type of Controller	Dos & Windows 3.X	Windows 95	Windows NT 3.51	Windows NT 4.0
Deskpro 6000 PII (9/97 & 1/98)	ESS 1869	SoftPaq Driver Only	Sound System Compatible (Native) & Softpaq Driver	Sound System Compatible (Native) & Softpaq Driver	Sound System Compatible (Native) & Softpaq Driver
Deskpro 4000 PII (9/97 & 1/98) selected models	ESS 1869	SoftPaq Driver Only	Sound System Compatible (Native) & Softpaq Driver	Sound System Compatible (Native) & Softpaq Driver	Sound System Compatible (Native) & Softpaq Driver
Deskpro 4000MMX selected models	ESS 1868	SoftPaq Driver Only	Sound System Compatible (Native) & Softpaq Driver	Sound System Compatible (Native) & Softpaq Driver	Sound System Compatible (Native) & Softpaq Driver
Deskpro XL	Compaq Enhanced Business Audio	MS WSS Compatible v2.0b	Sound System Compatible (Native)	Sound System Compatible	Sound System Compatible (Native)
Deskpro XE	Compaq Enhanced Business Audio	MS WSS Compatible v2.0b	Sound System Compatible (Native)	Sound System Compatible	Sound System Compatible (Native)
Deskpro M selected models	Compaq Enhanced Business Audio	MS WSS Compatible v2.0b	Sound System Compatible (Native)	Sound System Compatible	Sound System Compatible (Native)
Deskpro i selected models	Compaq Business Audio	MS WSS Compatible v1.02	Compaq Business Audio (Native)	Sound System Compatible	Compaq Business Audio (Native)

Deskpro i Series Memory Matrix

Deskpro i Memory Matrix								
	Type	Connector				Std	Max	
Models	RAM	Edge	Pins	Speed	Parity	MBs	MBs	Upgrading
4/66i								
340	FPM	Gold	72	80ns	Yes	8	32	Upgrade Chart
4/66i								
1, 120, 240	FPM	Gold	72	80ns	Yes	4/8*	32	Upgrade Chart
4/33i								
340	FPM	Gold	72	80ns	Yes	8	32	Upgrade Chart
4/33i								
1, 120, 240	FPM	Gold	72	80ns	Yes	4/8*	32	Upgrade Chart
4/25i								
340	FPM	Gold	72	80ns	Yes	8	32	Upgrade Chart
4/25i								
1, 120, 240	FPM	Gold	72	80ns	Yes	4/8*	32	Upgrade Chart
3/25i ,3/33i								
1, 84, 120	FPM	Gold	72	80ns	Yes	4	32	Upgrade Chart
Standard Memory						Slots		
Standard Memory	Soldered		Socketed		Used	Empty	Total	
4MBs	4MBs Soldered		None		0	4	4	
8MBs	4MBs Soldered		One 4MB SIMM		1	3	4	

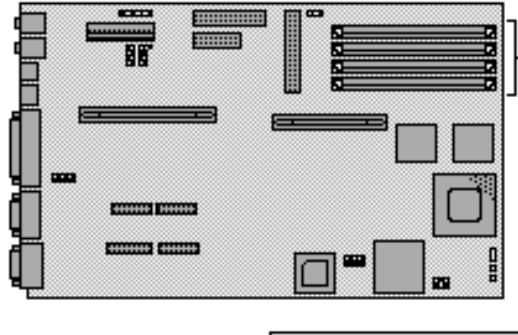
Note:

*In July 1993, units started to ship with 8MBs of memory.

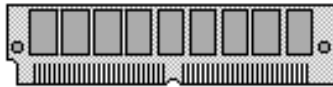
[Privacy and Legal Statement](#)

Last Update:05-26-99 09:20:48 AM

PROCESSOR BOARD (4 MEGABYTES)
Assy# 002566/002569/002578/002575/002623
002626/002629/002632/002635



ADD ANY 4 OF THE FOLLOWING UP
TO 32-MB TOTAL SYSTEM MEMORY



1-MB MEMORY MODULE
SPARE PN 118740-001

2-MB MEMORY MODULE
OPTION PN 118689-001

4-MB MEMORY MODULE
OPTION PN 118690-001

8-MB MEMORY MODULE
OPTION PN 128877-001

Deskpro/i Family Memory Upgrade Chart

Deskpro i 386

Unit Name	Processor	Serial Number Code	Assy Number	System Board Spare #	Hard Drive	Memory
Deskpro 325I	Intel 386 DX 25	HEA1	002623 enh	141098-001	none	4mb down
Deskpro 3 25i	Intel 386 DX 25	HEA2	002623 enh	141098-001	84mb	4mb down
Deskpro 3 25i	Intel 386 DX 25	HEA3	002623 enh	141098-001	120mb	4mb down
Deskpro 3 25i	Intel 386 DX 25	HCP1	002566 orig	141342-001	none	4mb down
Deskpro 3 25i	Intel 386 DX 25	HCP2	002566 orig	141342-001	84mb	4mb down
Deskpro 3 25i	Intel 386 DX 25	HCP3	002566 orig	141342-001	120mb	4mb down
Deskpro 3 33i	Intel 386 DX 33	HCQ1	002569 orig	141341-001	none	4mb down
Deskpro 3 33i	Intel 386 DX 33	HCQ2	002569 orig	141341-001	84mb	4mb down
Deskpro 3 33i	Intel 386 DX 33	HCQ3	002569 orig	141341-001	120mb	4mb down
Deskpro 3 33i	Intel 386 DX 33	HEB1	002626 enh	141099-001	none	4mb down
Deskpro 3 33i	Intel 386 DX 33	HEB2	002626 enh	141099-001	84mb	4mb down
Deskpro 3 33i	Intel 386 DX 33	HEB3	002626 enh	141099-001	120mb	4mb down

[Privacy and Legal Statement](#)

Last Update:05-22-99 03:20:48 AM