

# **StorageWorks by Compaq**

---

NAS B2000

Quick Start Guide

Part Number 292283-001

(First Edition) May 2002

Product Version: Version 1.0

This quick start guide provides information about how to deploy the *StorageWorks*<sup>™</sup> NAS B2000 by Compaq.

© 2002 Compaq Information Technologies Group, L.P.

Compaq, the Compaq logo, and StorageWorks are trademarks of Compaq Information Technologies Group, L.P. in the U.S. and/or other countries. All other product names mentioned herein may be trademarks of their respective companies.

Compaq shall not be liable for technical or editorial errors or omissions contained herein. The information is provided as is without warranty of any kind and is subject to change without notice. The warranties for Compaq products are set forth in the express limited warranty statements accompanying such products. Nothing herein should be construed as constituting an additional warranty.

StorageWorks by Compaq NAS B2000 Quick Start Guide

(First Edition) May 2002  
Part Number 292283-001

---

# Contents

## About This Guide

Intended Audience .....	v
Important Safety Information .....	v
Symbols on Equipment.....	v
Rack Stability.....	vii
Symbols in Text.....	vii
Text Conventions.....	viii
Related Documents.....	viii
Getting Help.....	viii
Compaq Technical Support.....	ix
Compaq Website.....	ix
Compaq Authorized Reseller .....	x

## Chapter 1

### Product Overview

Configuration Options .....	1-1
Managing the NAS B2000 .....	1-2
Dependencies and Requirements .....	1-3
Storage Requirements .....	1-3
IP Networking and Setup Requirements .....	1-3
Deploying the NAS B2000 on the Network .....	1-4
Setup and Configuration Overview .....	1-6
Storage Management Overview.....	1-7
Storage Management Elements.....	1-7
Storage Elements.....	1-9
Virtual Storage Elements .....	1-9
File System Elements.....	1-10
File-Sharing Elements.....	1-10

## Chapter 2

### Before You Begin

Preinitialization .....	2-1
Collect Information for Configuration .....	2-1
Configuration Information.....	2-1

## Chapter 3

### Configuration Setup

Configuration Method .....	3-1
WebUI Configuration.....	3-2
Auto Discovery Method (Via RapidLaunch).....	3-2
Direct Access Method (Using Hostname) .....	3-9
Completing the System Configuration.....	3-11

## Index

---

## About This Guide

This guide provides step-by-step instructions for deployment of the StorageWorks NAS B2000 by Compaq.

### Intended Audience

This guide assumes that the reader has knowledge of Microsoft administrative procedures and file-sharing protocols. Compaq recommends that the reader obtain supplemental documentation relative to these topics prior to setting up the NAS B2000.

### Important Safety Information

Before installing this product, read the *Important Safety Information* document provided.

### Symbols on Equipment

The following symbols may be placed on equipment to indicate the presence of potentially hazardous conditions:



**WARNING:** This symbol, in conjunction with any of the following symbols, indicates the presence of a potential hazard. The potential for injury exists if warnings are not observed. Consult your documentation for specific details.

---



This symbol indicates the presence of hazardous energy circuits or electric shock hazards. Refer all servicing to qualified personnel.

**WARNING: To reduce the risk of injury from electric shock hazards, do not open this enclosure. Refer all maintenance, upgrades, and servicing to qualified personnel.**

---



This symbol indicates the presence of electric shock hazards. The area contains no user or field serviceable parts. Do not open for any reason.

**WARNING: To reduce the risk of injury from electric shock hazards, do not open this enclosure**

---



This symbol on an RJ-45 receptacle indicates a network interface connection.

**WARNING: To reduce the risk of electric shock, fire, or damage to the equipment, do not plug telephone or telecommunications connectors into this receptacle.**

---



This symbol indicates the presence of a hot surface or hot component. If this surface is contacted, the potential for injury exists.

**WARNING: To reduce the risk of injury from a hot component, allow the surface to cool before touching.**

---



These symbols, on power supplies or systems, indicate that the equipment is supplied by multiple sources of power.

**WARNING: To reduce the risk of injury from electric shock, remove all power cords to completely disconnect power from the system.**

---



This symbol indicates that the component exceeds the recommended weight for one individual to handle safely.

Weight in kg  
Weight in lb

**WARNING: To reduce the risk of personal injury or damage to the equipment, observe local occupational health and safety requirements and guidelines for manual material handling.**

---

## Rack Stability

---



**WARNING:** To reduce the risk of personal injury or damage to the equipment, be sure that:

- The leveling jacks are extended to the floor.
  - The full weight of the rack rests on the leveling jacks.
  - The stabilizing feet are attached to the rack if it is a single-rack installation.
  - The racks are coupled in multiple-rack installations.
  - Only one component is extended at a time. A rack may become unstable if more than one component is extended for any reason.
- 

## Symbols in Text

These symbols may be found in the text of this guide. They have the following meanings.



**WARNING:** Text set off in this manner indicates that failure to follow directions in the warning could result in bodily harm or loss of life.

---



**CAUTION:** Text set off in this manner indicates that failure to follow directions could result in damage to equipment or loss of information.

---

**IMPORTANT:** Text set off in this manner presents clarifying information or specific instructions.

**NOTE:** Text set off in this manner presents commentary, sidelights, or interesting points of information.

## Text Conventions

This document uses the following conventions:

- *Italic type* is used for complete titles of published guides or variables. Variables include information that varies in system output, in command lines, and in command parameters in text.
- **Bold type** is used for emphasis, for onscreen interface components (window titles, menu names and selections, button and icon names, and so on), and for keyboard keys.
- `Monospace typeface` is used for command lines, code examples, screen displays, error messages, and user input.
- **Sans serif typeface** is used for uniform resource locators (URLs).

## Related Documents

For additional information on the topics covered in this guide, refer to the following documentation:

- *StorageWorks by Compaq NAS B2000 Administration Guide*
- *StorageWorks by Compaq NAS B2000 Quick Reference and Rack Installation Guide*
- *StorageWorks by Compaq NAS B2000 Release Notes*

## Getting Help

If you have a problem and have exhausted the information in this guide, you can get further information and other help in the following locations.



## Compaq Technical Support

In North America, call the Compaq Technical Support Phone Center at 1-800-OK-COMPAQ. This service is available 24 hours a day, 7 days a week. For continuous quality improvement, calls may be recorded or monitored. Outside North America, call the nearest Compaq Technical Support Phone Center. Telephone numbers for worldwide Technical Support Centers are listed on the Compaq website, [www.compaq.com](http://www.compaq.com).

Be sure to have the following information available before you call Compaq:

- Technical support registration number (if applicable)
- Product serial number
- Product model name and number
- Applicable error messages
- Add-on boards or hardware
- Third-party hardware or software
- NAS operating system revision level

## Compaq Website

The Compaq website has information on this product as well as the latest drivers and flash ROM images. You can access the Compaq website at [www.compaq.com/storage](http://www.compaq.com/storage).

## **Compaq Authorized Reseller**

For the name of your nearest Compaq authorized reseller:

- In the United States, call 1-800-345-1518.
- In Canada, call 1-800-263-5868.
- Elsewhere, see the Compaq website for locations and telephone numbers.

---

## Product Overview

This chapter describes the configuration options and setup and configuration dependencies and requirements for the StorageWorks NAS B2000 by Compaq.

### Configuration Options

The NAS B2000 offers both internal and external storage options. It ships with an integrated SCSI-3 Smart Array 5i Controller for internal storage.

The external SCSI port of the integrated Smart Array 5i Controller can also support one additional StorageWorks 4300 Family storage enclosure for an extra 1 TB (terabyte) of storage as an external storage option.

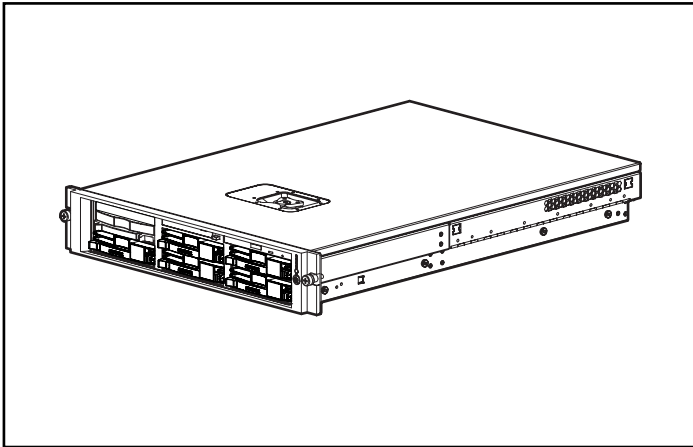
Another external storage option supports up to two Smart Array 5300 Family array controllers populated into the available PCI slots, for up to eight fully populated StorageWorks 4300 Family storage enclosures. This option provides an additional 8 TB of storage.

The NAS B2000 can provide up to 9.3 TB of raw storage capacity, spanning one hundred twenty-six 72-GB hard drives spread over nine StorageWorks 4300 Family storage enclosures. Each fully populated StorageWorks 4300 Family storage enclosure supports 14 hard drives, for a maximum raw capacity of 1 TB when using 72-GB hard drives.

## Managing the NAS B2000

The NAS B2000 is configured at the factory with default system settings and with the NAS operating system installed. Storage, however, is not pre-configured, allowing the NAS administrator to tailor the organization and configuration of the storage to specific environmental needs. Refer to the “Storage Management” section later in this chapter for more information.

The NAS administrator uses the Compaq Array Configuration Utility (ACU) to manage the hardware storage and uses Virtual Replicator (VR) software to manage the virtual storage.



**Figure 1-1: NAS B2000 device**

## Dependencies and Requirements

Specific conditions must be met in order for the NAS B2000 to operate.

### Storage Requirements

To protect against data loss from hard drive failure, arrays should be configured with fault tolerance in mind. Several fault tolerance methods have been devised and are described in the *StorageWorks by Compaq NAS B2000 Administration Guide*.

### IP Networking and Setup Requirements

The following are IP networking and setup requirements needed for a NAS B2000 device:

- Windows-based PC running Microsoft Internet Explorer 5.5 (or later) on the same network segment as the NAS B2000; this will be used to set up and administer the NAS device.
- A single Ethernet connection on a switch or hub for the Remote Insight Lights-Out Edition board.
- Additional Ethernet connection ports to client subnets (depending on network options ordered).

**IMPORTANT:** The RapidLaunch client and NAS B2000 must be on the same network segment as the management port or the RapidLaunch utility will not detect the NAS B2000.

## Deploying the NAS B2000 on the Network

The default shipping configuration contains two 10/100 integrated network interface controller (NIC) ports for client data access. These data ports also allow access to the Web user interface (WebUI) that accompanies the product. It is from the WebUI that most management and administrative procedures can be accomplished. An additional management port for remote console and diagnostics is provided off the Remote Insight Lights-Out Edition board. Compaq recommends that this connection be placed on a management LAN separate from the corporate infrastructure.

The NAS B2000 supports the use of NIC teaming. NIC teaming provides failover and load balancing of network ports of the NAS B2000. NIC teaming requires the network cables to be installed on the same subnet to enable it to work. However, Compaq does not recommend the assignment of IP addresses to the ports that will be teamed or load-balanced prior to the installation and setup of NIC teaming. For this reason, Compaq recommends that you set all network ports to DHCP. For information concerning the configuration of NIC teaming after setup is complete, see the administration guide.

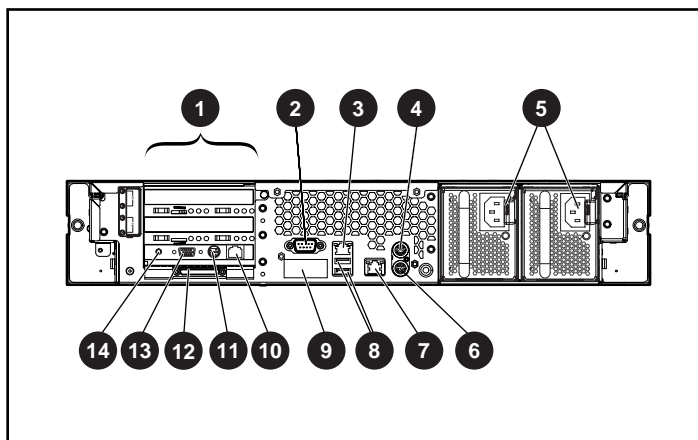


Figure 1-2: Rear panel connectors

**Table 1-1: Rear Panel Connectors**

Item	Description
①	PCI expansion slots
②	Serial connector (teal)
③	RJ-45 connector for NIC 2 (Eth1)
④	Mouse connector (PS/2) (green)
⑤	Power connectors
⑥	Keyboard connector (PS/2) (purple)
⑦	RJ-45 connector for NIC 1 (Eth0)
⑧	USB connectors (2) (black)
⑨	Video connector (blue) (not supported)
⑩	Remote Insight Lights-Out Edition board Eth port
⑪	Keyboard/mouse connector (Remote Insight Lights-Out Edition board) (not needed, internally connected)
⑫	VHDCI SCSI connector (SCSI port 1)
⑬	Video connector (Remote Insight Lights-Out Edition board)
⑭	Power for external adapter (Remote Insight Lights-Out Edition board)

## Setup and Configuration Overview

Setting up systems is a well-defined process. This section is intended as an overview of the process, not a detailed list of step-by-step instructions. Step-by-step procedures are documented in the administration guide. Some of the steps are driven by wizards within the WebUI. In either type of setup, it is important to read all of the supplied documentation before starting. Relevant documents include:

- *StorageWorks by Compaq NAS B2000 Administration Guide*
- *StorageWorks by Compaq NAS B2000 Quick Reference and Rack Installation Guide*
- *StorageWorks by Compaq NAS B2000 Release Notes*

The following describes how to configure the NAS B2000.

1. Configure the NAS device using Chapters 2 and 3 from this guide.
2. **This is an optional step.** Install NIC teaming software and create fault tolerant or load-balanced network ports. Follow the recommendations found in this guide and in the administration guide.
3. **This is a recommended step.** Place the NAS device into an Active Directory or Windows NT 4.0 domain for ease of manageability.
4. With the system online, create the arrays and logical volumes (LUNs) using Compaq ACU one at a time so that they can be identified easily in Device Manager and assigned to a Virtual Replicator (VR) pool. See the procedure in the storage management section of the administration guide.
5. Create Virtual Replicator pools and virtual disks from those pools and format the virtual disks.
6. **This is an optional step.** Enable protocols such as NFS sharing, NCP, and/or AppleTalk. See the administration guide for this procedure in detail.
7. **This is an optional step.** Create shares corresponding to the protocols mentioned in the previous steps. Grant access rights to the shares.

Read the remaining sections of the administration guide.



## Storage Management Overview

This section provides an overview of the components that make up the NAS storage structure. A complete discussion of the components and their relationships is available in the administration guide.



**CAUTION:** This section on storage management and VR is required reading material for the NAS administrator. This section develops the concepts and requirements that serve as the basis for successfully using a *StorageWorks* NAS device. Failure to read this section and the appropriate sections on storage management in the administration guide may lead to data loss or file corruption.

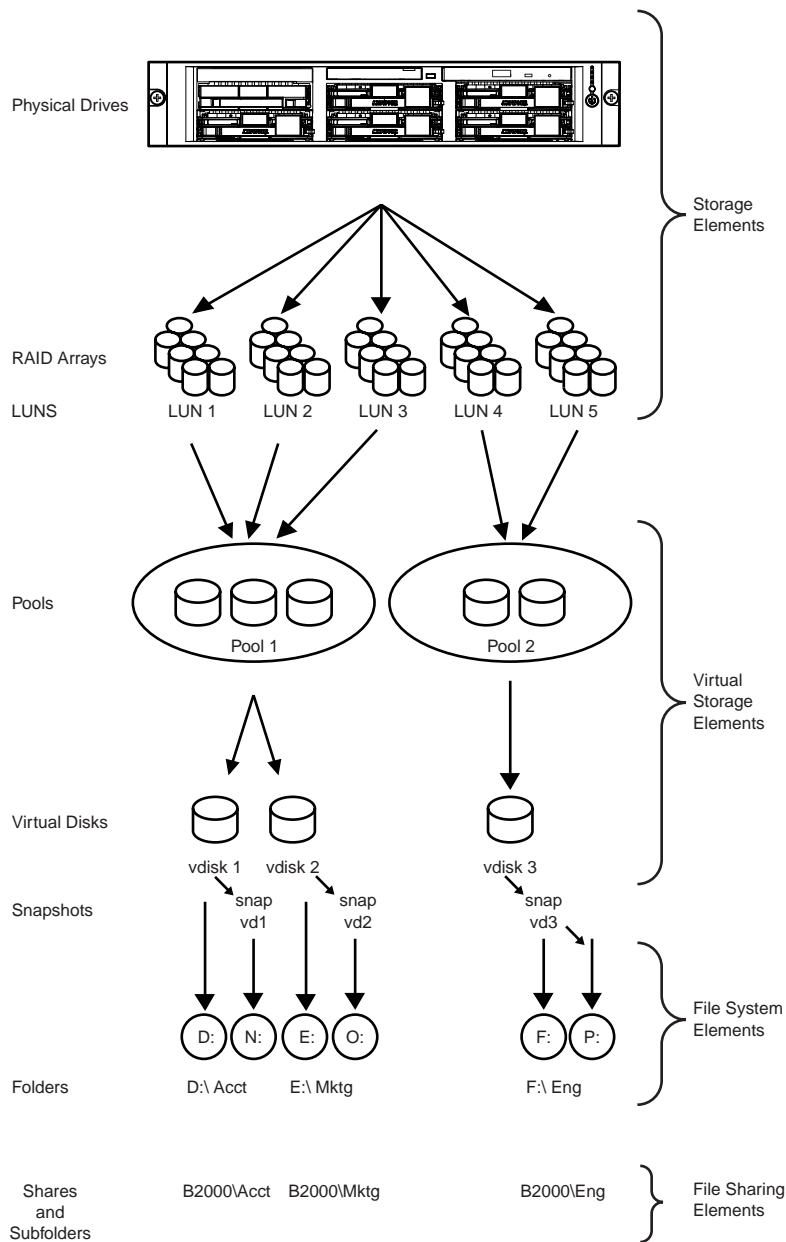
---

## Storage Management Elements

Figure 1-3 provides an illustration of the various storage components of the NAS B2000. Storage is broken up into four major divisions:

- Storage elements
- Virtual storage elements
- File system elements
- File sharing elements

Each of these elements is composed of the previous level's elements.



**Figure 1-3: Storage management process**

## Storage Elements

The lowest level of storage management on the NAS B2000 occurs at the physical drive level. Physical drives are grouped into RAID arrays for fault tolerance and better performance. The end user should configure RAID arrays using ACU. Refer to the administration guide for more details on creating RAID arrays.

## Virtual Storage Elements

Virtual Replicator (VR) provides volume virtualization for the NAS device by allowing for the creation of virtual disks from VR pools containing the LUNs. VR pools are logical abstractions that aggregate the disk space from one or more LUNs into a large set of disk blocks. From the pool of blocks, VR virtual disks are created and presented to the operating system as New Technology File System (NTFS) volume pools. Virtual disks can be enlarged at a later time when there is a need for more space.

When using VR, the following constraints apply:

- Windows 2000's Logical Volume Manager (LVM) should not be used to manage VR disks. The two management tools do not have an awareness of each other and compatibility issues can arise between the two management tools.
- VR pools can consist of a maximum of eight storage units. Thus, a pool can consist of a maximum of eight separate LUNs. Each LUN cannot exceed 1 TB in size.
- A pool may contain a maximum of 8 TB of disk space, and the maximum virtual disk size is 2 TB.
- There is a limit to the number of virtual disks that can be carved out of a VR pool. Currently, a maximum of eight virtual disks can be carved out of a single pool.
- To be accessible, each virtual disk must be presented as a drive letter or a mount-point on the NAS device for users and on the operating system. Although it is possible to create a virtual disk and not map it to a drive letter or mount-point, neither the users nor the administrator would have access to the storage space contained within that virtual disk.

- All the units that make up a pool should have the same high-availability characteristics (RAID levels and striping methods). If one LUN member of the pool goes offline, the entire pool is unavailable.

## **File System Elements**

Virtual disks are formatted with NTFS with drive letter assignments or mount point assignments. Refer to the administration guide for more details on file system elements.

## **File-Sharing Elements**

The NAS B2000 supports several file-sharing protocols, including CIFS, NFS, FTP, HTTP, NCP, and AppleTalk. Refer to the administration guide for more details on file-sharing elements.

---

## Before You Begin

This chapter describes the preinitialization and configuration tasks required for the StorageWorks NAS B2000.

### Preinitialization

Before beginning the installation process, verify that the hardware installation is complete. Verify that the NAS B2000 is completely installed in the rack and that all cables and cords are connected. The setup utility documented here and in the next section only provide basic setup for the network components of the NAS B2000.

**IMPORTANT:** If you need assistance with rack installation or hardware connections, refer to the quick reference and rack installation guide included in the shipping carton.

### Collect Information for Configuration

Choose a host name and collect general information before initializing the NAS B2000.

### Configuration Information

Collect the general information required to initialize the NAS device for both dynamic host configuration protocols (DHCP) and non-DHCP configurations. You will be asked for this information during configuration, as shown in Table 2-1. Become familiar with this information before attempting to configure the NAS device.

**Table 2-1: Configuration Information**

<b>Part A: To be completed for DHCP and non-DHCP configurations</b>			
Server Host Name:			
Remote Insight Lights-Out Edition board Name:	Remote Insight Lights-Out Edition board Default User:	Password:	
<p>Note: If NIC teaming is to be implemented, determine which ports will be teamed. Configure these Ethernet ports for DHCP protocol. For more information, refer to the Ethernet teaming features and procedures section of administrative procedures in the administration guide.</p>			
<b>Part B: To be completed for non-DHCP configurations only</b>			
DNS Servers	IP Address		
1			
2			
3			
NAS NIC Port*	IP Address	Subnet Mask	Gateway Address
Eth 0			
Eth 1			
Remote Insight Lights-Out Edition board Eth			
<p>* The default NAS B2000 has two Ethernet ports available for network connectivity. Disable ports that will not be used. Each Ethernet port must be configured with a separate subnet.</p>			

*continued*

**Table 2-1: Configuration Information** *continued*

<b>Part A: To be completed for DHCP and non-DHCP configurations</b>	
<b>Part C: SNMP Information (optional)</b>	
Trap Destination (IP Address) Manager Client:	
Management Traps Community String:	
System Management Community String:	

---

## Configuration Setup

This chapter provides information about configuring the StorageWorks NAS B2000 using the online method.

Before completing the tasks in this chapter, verify that the NAS B2000 is installed in the rack and that all cables and cords are connected. It is also necessary to collect certain information required during the configuration process, as mentioned in Chapter 2, “Before You Begin.”

### Configuration Method

The method for configuring the NAS B2000 is by using the WebUI configuration application that comes with the NAS B2000.



## WebUI Configuration

The NAS B2000 includes a WebUI that is designed to be a graphical, easy-to-use application that gathers the necessary information for configuration. The WebUI may be accessed through two methods:

- Through auto discovery mode using the RapidLaunch utility
- By host name

### Auto Discovery Method (Via RapidLaunch)

The NAS B2000 includes a RapidLaunch CD that can run on any Windows-based PC using Internet Explorer 5.5 (or later).

### Requirements

The following items are required to run the WebUI configuration application:

- Windows-based PC loaded with Internet Explorer 5.5 (or later) on the same network segment as the NAS B2000
- RapidLaunch CD

**NOTE:** The NAS B2000 is designed to be deployed without a monitor, keyboard, and mouse. These ports are available and supported by the NAS device, if used.

## Procedure

To initialize the NAS B2000 using the WebUI configuration application:



**CAUTION:** Do not power up the NAS device until steps 1 through 5 are completed.

---

1. Connect the Ethernet cables to the respective network ports of the NAS B2000 and the corresponding network segments, in accordance with the information in the “Configuration Information” section in Chapter 2.

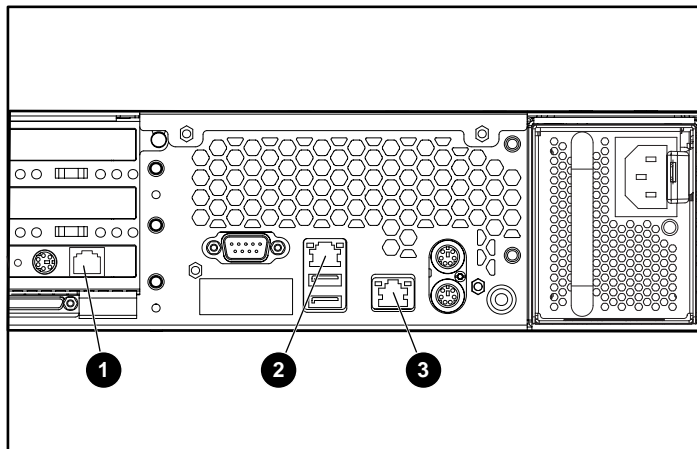
See Figure 3-1 and Table 3-1 for the locations of the network ports on the NAS B2000.

2. Verify that the Windows-based PC client is connected to the same subnet as the NAS B2000.
3. Power on the Windows-based PC and wait until the operating system has completely loaded.
4. Insert the RapidLaunch CD into the CD-ROM drive.
5. The RapidLaunch CD should automatically run. If the program does not start up automatically, the program may be run manually. Click **Start**, then select **Run** on the Windows taskbar, and then type the following:

```
{CD ROM drive}:\setup.exe
```

Wait for the interface to start up.

6. Go to the NAS device and power it on. It will be several minutes before the NAS device is accessible on the network.
7. Return to the Windows-based PC. Select **StorageWorks NAS** from the **Show** drop down list to have RapidLaunch list all NAS devices on the network, as shown in Figure 3-2.



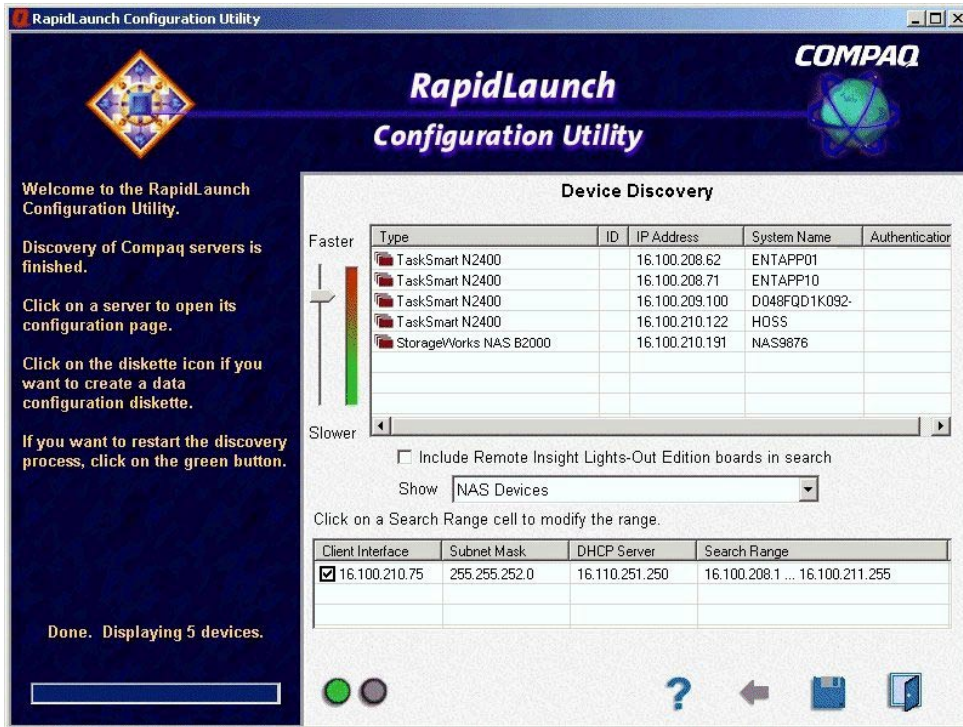
**Figure 3-1: Ethernet connectors**

**Table 3-1: Ethernet Network Connectors**

Item	Description
①	Remote Insight Lights-Out Edition board Ethernet port (RILOE Eth)
②	NIC Ethernet port 1 (Eth 1) used for data
③	NIC Ethernet port 0 (Eth 0) used for data

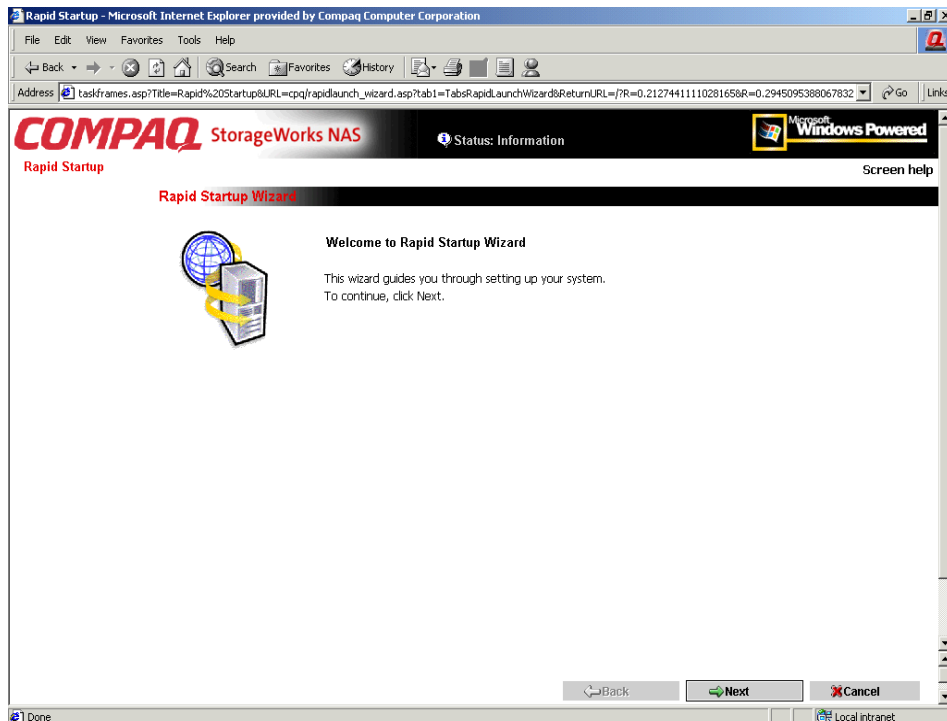
**Note:** Connect a loopback cable to any of the NAS B2000 Ethernet ports that are not configured for use.





**Figure 3-3: RapidLaunch device discovery screen**

9. Select the StorageWorks NAS B2000 device from the device list. This launches the WebUI configuration application (Rapid Startup) on the target StorageWorks NAS device, as shown in Figure 3-4.



**Figure 3-4: Rapid Startup wizard screen**

10. Using the information from Table 2-1, fill in the screens that follow. Verify that your information is correct when the configuration review screen is displayed as shown in Figure 3-5.
11. Click the **Finish** icon to exit Rapid Startup. Close the browser window. The NAS B2000 will now reboot to set the configuration information.
12. Exit the RapidLaunch utility and remove the RapidLaunch CD from the CD-ROM drive and store it in a secure location.

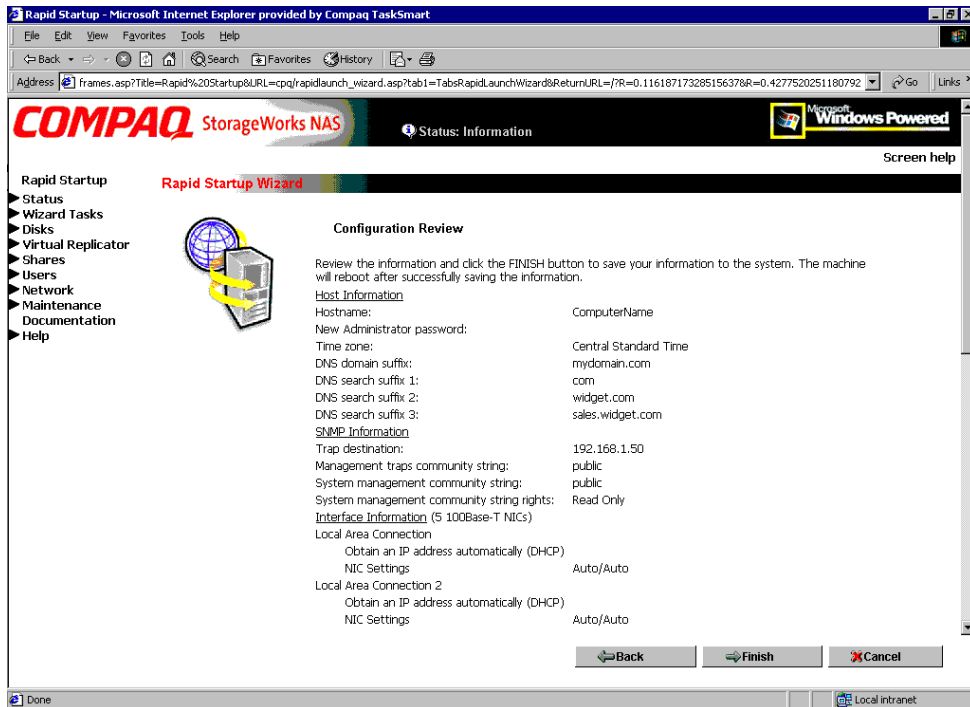


Figure 3-5: Rapid Startup configuration review screen

## Direct Access Method (Using Hostname)

The NAS B2000 ships by default with DHCP enabled on the network port. If the system is placed on a DHCP serviced network and the serial number of the device is known, it can be accessed through a client running Microsoft Internet Explorer 5.5 (or later) on that network, using the 3201 port of the device. The serial number may be found behind the front bezel of the NAS B2000, as illustrated in Figure 3-6.

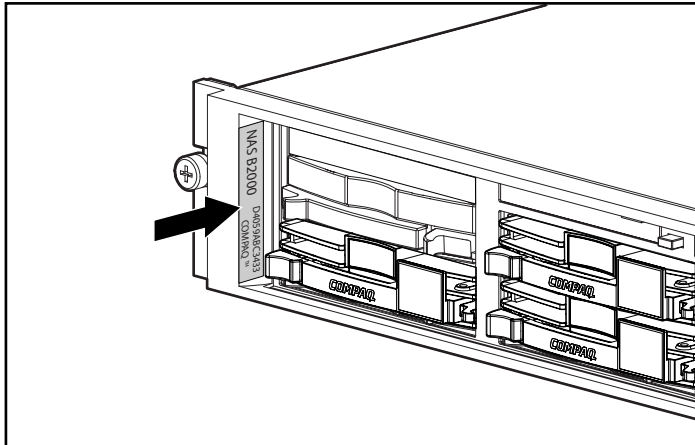


Figure 3-6: Serial number location

## Requirements

The following items are required to run the WebUI configuration application:

- Windows-based PC loaded with Internet Explorer 5.5 (or later) on the same segment as the NAS B2000
- DHCP-serviced network
- Serial number of the NAS B2000

**NOTE:** The NAS B2000 is designed to be deployed without a monitor, keyboard, and mouse. These ports are available and supported by the NAS device, if used.



## Procedure

To initialize the NAS B2000 using the WebUI configuration application:

1. Connect the Ethernet cables to the respective network ports of the NAS B2000 and the corresponding network segments in accordance with the information in the “Configuration Information” section in Chapter 2.

See Figure 3-1 and Table 3-1 for the locations of the network ports on the NAS B2000.

2. Go to the NAS device and power it on. It will be several minutes before the NAS device is accessible on the network.
3. Open Internet Explorer on the Windows-based PC. Enter `http://`, the serial number of the NAS B2000 followed by a hyphen (-), followed by `:3201`. Press **Enter**. This launches the WebUI configuration application (Rapid Startup) on the target StorageWorks NAS device as shown in Figure 3-4.

Example: `http://D4059ABC3433-:3201`

**NOTE:** The NAS device will respond when the NAS operating system has started.

4. Using the information from Table 2-1, fill in the screens that follow. Verify that your information is correct when the configuration review screen is displayed, as shown in Figure 3-5.
5. Click the **Finish** icon to exit Rapid Startup. Close the browser window. The NAS B2000 will now reboot to set the configuration information.

## **Completing the System Configuration**

After the configuration process, there are additional tasks required in order to begin sharing files on the network. All procedures for the configuration tasks may be found in the NAS B2000 administration guide. These include:

- Changing the system date and time
- Establishing file shares and creating access permissions

In addition to the required configuration steps above, several optional tasks may need to be completed:

- Enabling additional protocols and the associated file shares
- NIC teaming

---

# Index

## B

before you begin 2-1

## C

cautions

data loss 1-7

defined vii

file corruption 1-7

Compaq authorized reseller x

configuration *See also* configuration tasks

collect information 2-1

from RapidLaunch CD 3-1

WebUI 3-2

configuration methods 3-1

configuration setup 3-1

configuration tasks

complete the system configuration 3-11

preinitialization 2-1

connectors

keyboard 1-5

mouse 1-5

NICs 1-5

power 1-5

Remote Insight Lights-Out Edition board

Eth port 1-5

RJ-45 1-5

serial 1-5

USB 1-5

VHDCI SCSI 1-5

video 1-5

## D

deployment

StorageWorks NAS B2000 1-4

DHCP (dynamic host configuration protocol)

defined 2-1

dynamic host configuration protocol *See*  
DHCP

## E

electric shock

symbol vi

warning vi

Ethernet connectors, illustrated 3-4

Ethernet Network Connectors, table 3-4

Ethernet ports

configuring 2-2

loopback cables 3-4

exclamation point symbol v

expansion slots, locations 1-5

## H

hazard symbol v

hazardous conditions symbols on

equipment v

hazardous energy circuits symbol vi

help

additional sources viii

- Compaq authorized resellers, telephone numbers x
- Compaq website ix
- technical support telephone numbers viii
- host configuration protocols, DHCP and non-DHCP 2-1
- hot surface
  - symbol vi
  - warning vi

## I

- Important Safety Information* document v
- intended audience v

## K

- keyboard connector 1-5

## L

- labels on equipment v

## M

- mouse connector 1-5

## N

- NAS B2000 device, illustrated 1-2
- NAS B2000 rear view, illustrated 1-4
- NICs
  - connectors 1-5

## P

- power
  - warning vi
- power connector 1-5
- power sources symbol vi
- preinitialization
  - collect information for configuration 2-1

- preinitialization tasks 2-1
- product overview 1-1

## R

- rack stability, warning vii
- Rapid Startup configuration review screen, illustrated 3-8
- Rapid Startup wizard screen, illustrated 3-7
- RapidLaunch CD
  - used for configuration 3-3
- RapidLaunch device discovery screen, illustrated 3-6
- RapidLaunch search screen, illustrated 3-5
- related documents viii
- Remote Insight Lights-Out Edition board Ethernet port connector 1-5
- RJ-45 connectors
  - location 1-5
- RJ-45 receptacle symbol vi
- RJ-45 receptacle, warning vi

## S

- safety information v
- screwdriver symbol vi
- serial connector 1-5
- serial number location, illustrated 3-9
- setup and configuration, NAS B2000 1-6
- setup, related documents 1-6
- slot locations
  - PCI slot 1 1-5
  - PCI slots 2 and 3 1-5
- storage management
  - file sharing elements 1-10
  - file system elements 1-10
  - storage elements 1-9
  - Virtual Replicator elements 1-9
- storage management and Virtual Replicator 1-7
- storage management overview 1-7
- storage management process, illustrated 1-8
- StorageWorks NAS B2000

configuration 3-1  
dependencies and requirements 1-3  
deployment 1-4  
IP networking and setup  
    requirements 1-3  
setup and configuration overview 1-6  
symbols  
    in text vii  
    on equipment v

## T

table, Ethernet Network Connectors 3-4  
technical support ix  
telephone numbers x  
telephone symbol vi  
text conventions viii

## U

USB connectors 1-5

## V

VHDCI SCSI connector 1-5  
video connector 1-5

## W

warnings  
    defined vii  
    electric shock vi  
    heavy weight vi  
    hot surface vi  
    multiple sources of power vi  
    rack stability vii  
    RJ-45 receptacle vi  
website  
    Compaq ix  
    Compaq ix  
WebUI configuration 3-2  
    auto discovery method 3-2  
    auto discovery method requirements 3-2  
    auto discovery procedure 3-3  
    direct access method (via hostname) 3-9  
    direct access procedure 3-10  
    direct access requirements 3-9  
weight  
    symbol vi  
    warning vi  
www.compaq.com ix  
www.compaq.com/storage ix