

# Intel AppUp<sup>®</sup> SMB Service

Built on the Intel<sup>®</sup> Hybrid Cloud Platform

## User Guide – Vembu StoreGrid\*

Revised 8/21/2012

This guide is intended to identify the steps required to install this software on the Intel<sup>®</sup> Hybrid Cloud platform, and does not replace the manufacturer's instructions for third-party products. Before completing the instructions below, you will need to install the respective software on the server using the Store feature in the Intel<sup>®</sup> Hybrid Cloud Management Portal (<https://hybridcloud.intel.com>).

**LICENSE ALERT:** Purchased keys may not be used on this product.

## Contents

Product Version.....	2
Dependencies / Requirements.....	2
Appliance Default Passwords.....	2
Configure Storage .....	2
Connect to the Appliance.....	3
Assign a Static IP Address to the Vembu Appliance.....	4
Troubleshooting .....	7
Technical Support .....	7

## Product Version

This guide applies to StoreGrid 3.5 and 4.0 versions of the appliance.

## Dependencies / Requirements

This guide must be followed before starting the Vembu StoreGrid\* appliance.

## Appliance Default Passwords

To download the current "Appliance Default Password List" (Login required):

1. Use a Web browser to go to: [www.intelhybridcloud.com/](http://www.intelhybridcloud.com/).
2. Click the **Login** link and enter your login information.
3. At the top of the page, select **Menu** and then click the **Support** link.
4. On the Support page, click the **Server Setup & Activation section** to expand it and then click the **Additional Setup Documents** link.
5. Click the Additional Setup Documents zip file version that you want to download and then select to save the zip file.
6. Extract the Appliance Default Password List from the zip file.

NOTE: The default, out-of-the-box experience allows you to specify the passwords for the Microsoft\* Windows\* appliances during configuration. For Linux\* appliances, type "passwd" in the shell.

## Configure Storage

Vembu StoreGrid backup server appliance is shipped with default storage as shown below.

Storage:			*Maximum Three harddisks can be added
Device Position	Name	Total Size	
3	New virtual disk	49.805 GB	
0	0	4.000 GB	

Resize Storage   Add Storage   Remove Storage

NOTE: The disk at device position 0 is the main boot partition; disk at device position 3 is used to resize the main boot partition. To boot the appliance, both disks at device positions 0 and 3 are required to be present in the appliance. **Please do not try to resize or remove either of the above two disks at startup time or even while using them in production. If you do so then the appliance will not boot.**

This appliance does not have backup location storage.

Vembu recommends using any of the following options for backup storage:

- Internal disk in the Intel Hybrid Cloud Server
- External disk or USB disk
- Network folder
- NAS device

If you want to use options 2, 3, or 4, you will need to contact Vembu support for specific information.

To use option 1 (internal disk in the Intel® Hybrid Cloud Server) as the backup location:

1. Activate the Vembu StoreGrid appliance on the Intel Hybrid Cloud Management Portal (the appliance will run in the halted state).
2. Open Intel Hybrid Cloud server manager.
3. Go to the Configure tab of the Vembu StoreGrid appliance and scroll down to the "Storage" section and then click **Add Storage**.
4. Enter a Storage Name in the corresponding field.
5. Assign the GB size that you will be using.



**Add Storage**

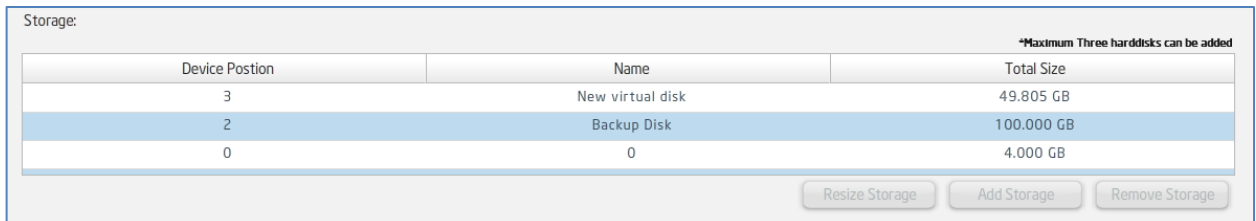
Storage Name

Size  GB

Use decimal values to specify disk size in MB.

6. Click **Add**. This will add the disk to the Vembu StoreGrid appliance.

You will see a storage section similar to the following:



Device Position	Name	Total Size
3	New virtual disk	49.805 GB
2	Backup Disk	100.000 GB
0	0	4.000 GB

\*Maximum Three harddisks can be added

The above example shows details of a backup disk of size 100 GB with the name "Backup Disk."

## Connect to the Appliance

1. To start the Vembu StoreGrid appliance, click the **Start** button.
2. Once the Suspend or Stop button appears, click the **Console** tab.
3. Click the **Launch** button to view the VNC console and the booting process.
4. After the appliance fully loads, log in to the root user account. (Refer to <http://intelhybridcloud.com/support.html> to view the Appliance Default Password List). Login is necessary to view Additional Setup Documents.
5. Run the command **ifconfig** to view the IP address for the appliance. Record the IP address for future reference.

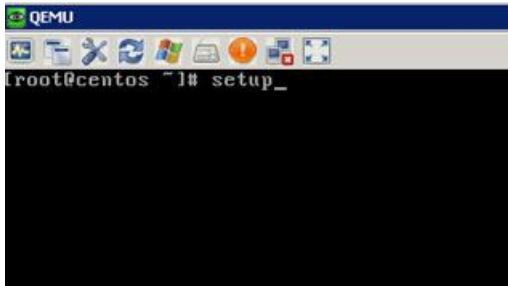
**NOTE:** By default, the Vembu StoreGrid appliance network interface listens on DHCP request. If the DHCP server is not available over the network, then please follow the steps given in section Assign a Static IP Address to the Vembu Appliance.

6. Open the Vembu StoreGrid Web Console (<http://< IP Address:6060>>) from any Microsoft Windows\*-based device on the same network.
  - The Web console user name is "admin" (refer to <http://intelhybridcloud.com/support.html> to view Appliance Default Password List). Login is necessary to view Additional Setup Documents.
  - This password can be changed after you log in to the Web console. Please note that a strong password ensures the most secure environment.

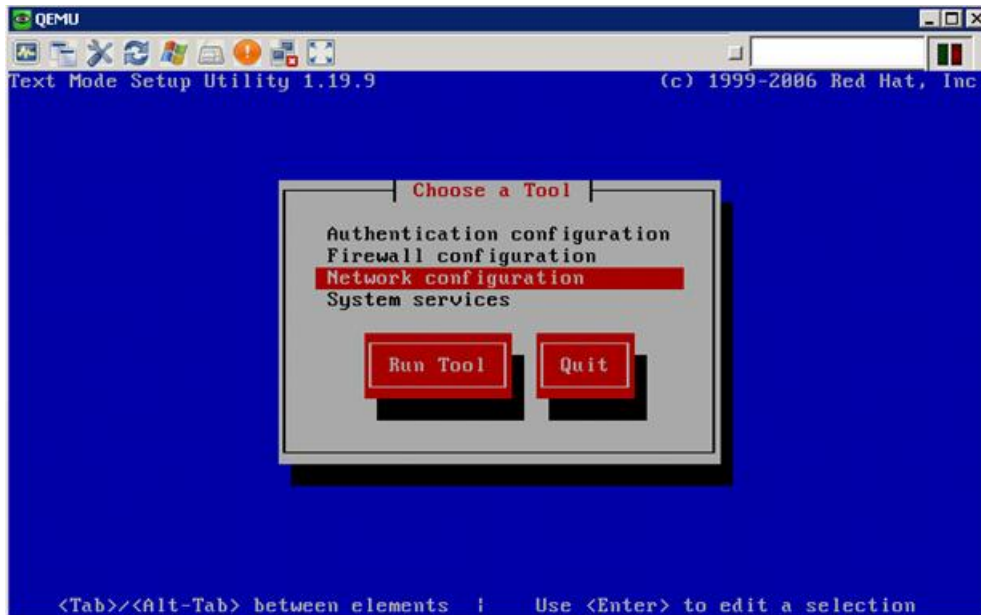
You are now ready to use Vembu StoreGrid.

## Assign a Static IP Address to the Vembu Appliance

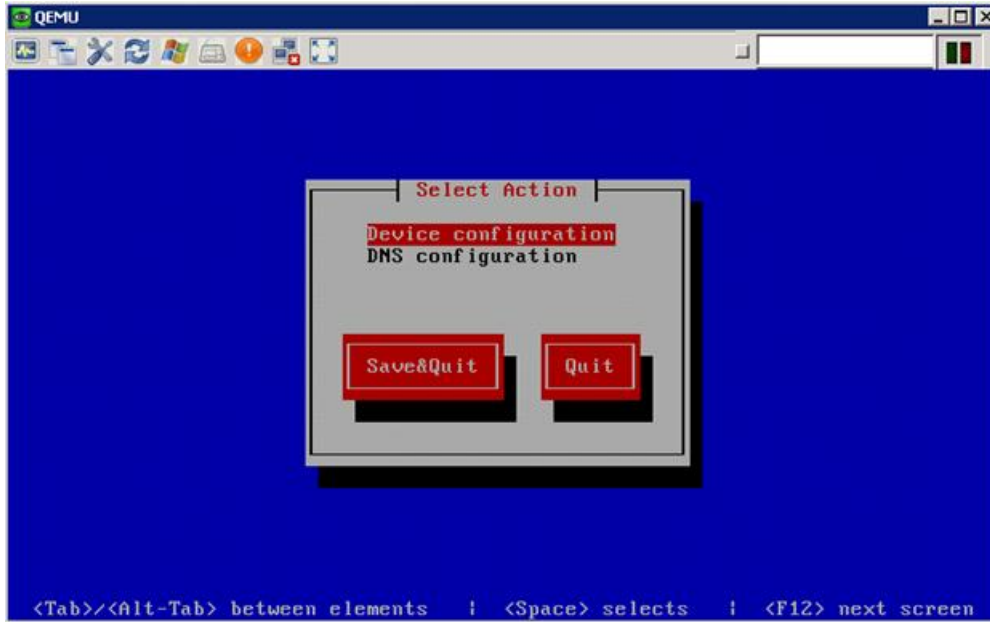
1. Log in to the Vembu appliance as a root user.
2. Run the setup command.



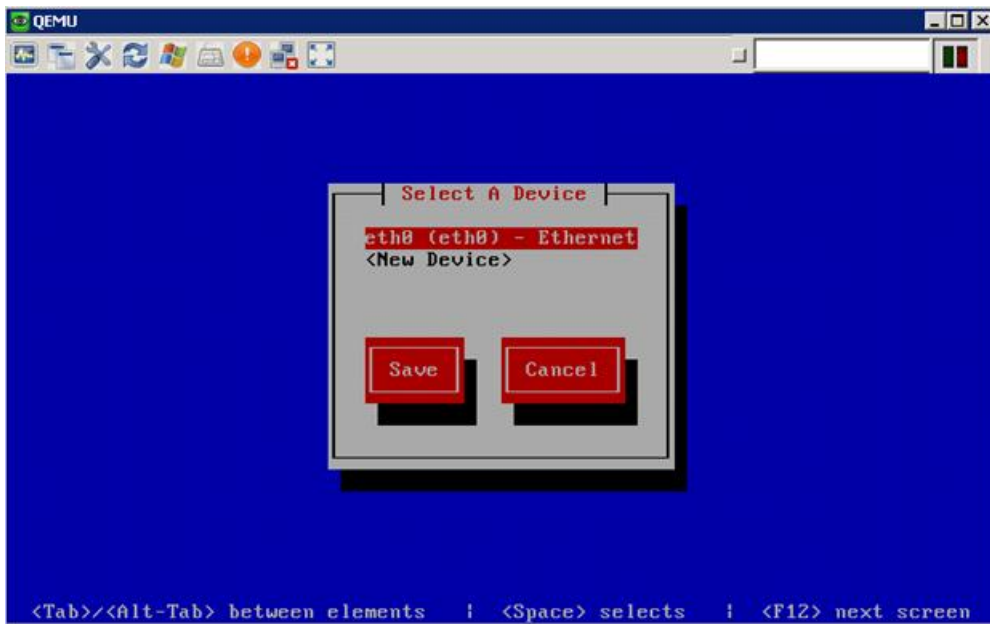
3. Select **Network Configuration** and then press the **Enter** key.



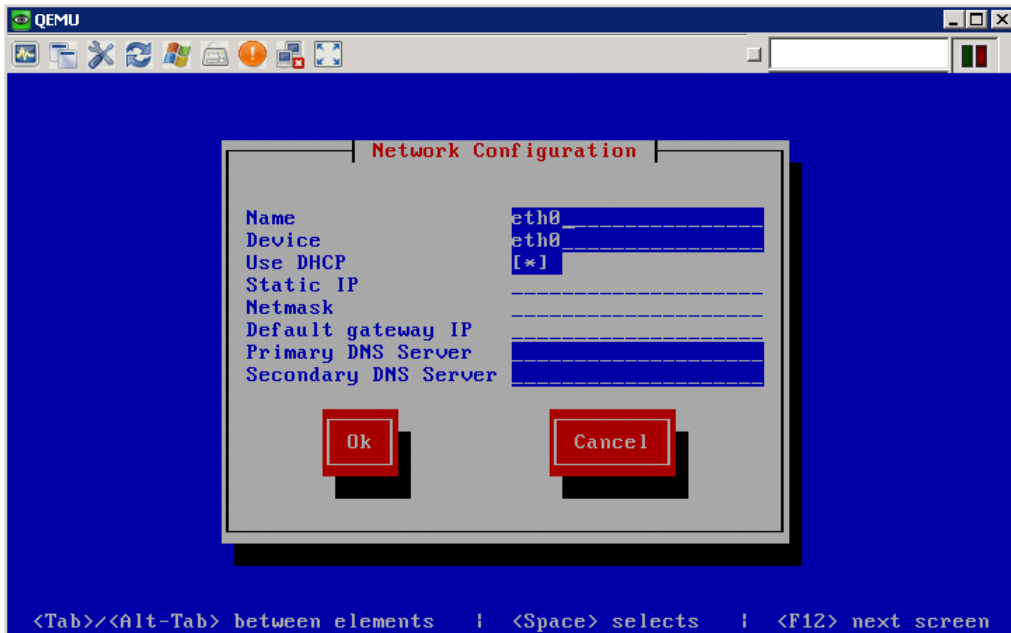
4. Select **Device Configuration** and then press the **Enter** key.



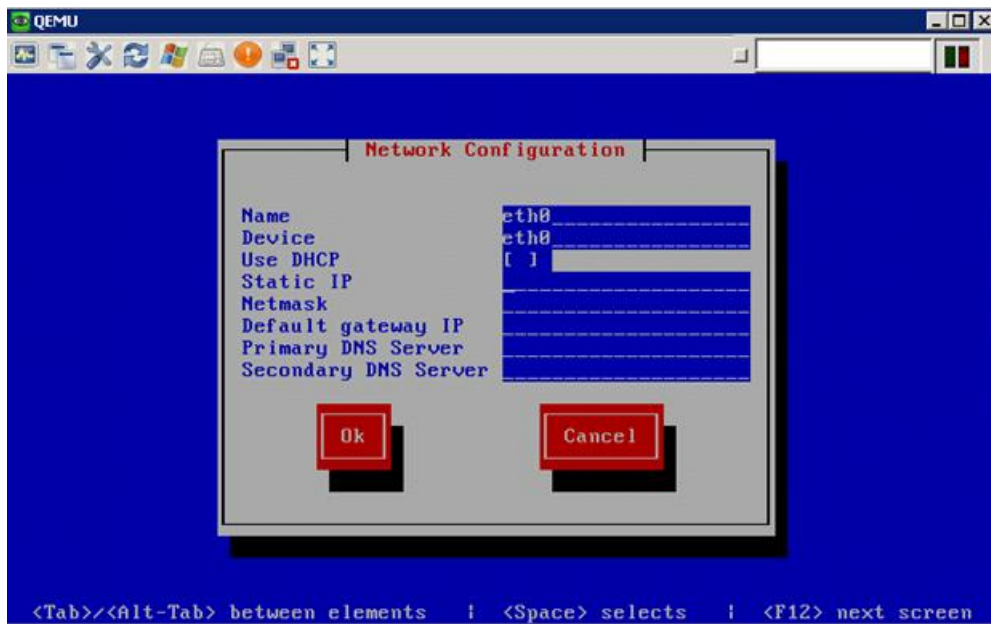
5. Select **eth0 – Ethernet** and then press the **Enter** key.



6. Select the **Use DHCP** text box.



7. Use the spacebar to remove the asterisk in the "Use DHCP" field, then enter the required values for the Static IP, Netmask, Default gateway IP, Primary DNS Server, and Secondary DNS Server. Click **OK**.



The static IP address has been assigned.

## Troubleshooting

### Technical Support

- For questions pertaining to this guide, contact Intel Customer Support:  
<http://www.intel.com/support/progserv/appupsbs/hybrid/sb/CS-032313.htm>
- In the event that you (the Managed Service Provider) are unable to resolve a technical support issue by providing first level support for the Software, you may obtain second level support from the help desk of the Software manufacturer, pursuant to the terms and conditions accompanying the Software. Technical Support contact information is provided at the following location:  
<http://www.intel.com/support/progserv/appupsbs/hybrid/sb/CS-032313.htm#Software>
- Intel® Hybrid Cloud Platform User Guide  
<http://www.intel.com/support/motherboards/server/hybrid/sb/CS-031729.htm>
- Appliance and Application Initial Setup Guides  
<http://www.intel.com/support/progserv/appupsbs/hybrid/sb/CS-032880.htm>