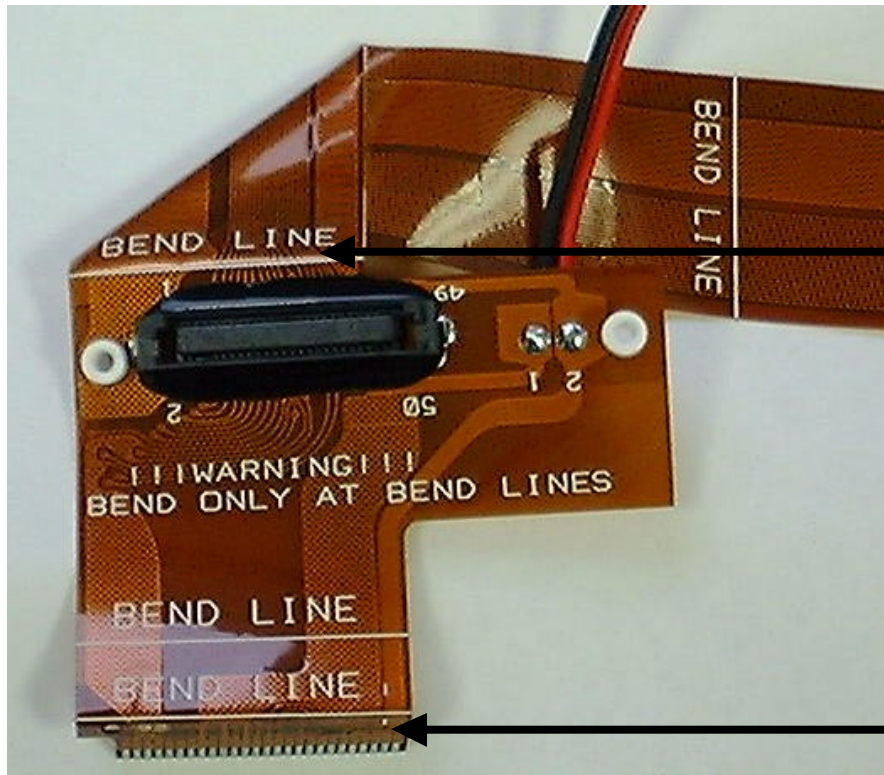


!!!WARNING!!!

Failure to properly install the Flex Cable on the Floppy and CD-ROM drives can result in broken traces to the cable. Follow these instructions to avoid damage to the cable.

1U Telco Server Instructions



!!!WARNING!!!
DAMAGE CAN RESULT FROM
IMPROPER HANDLING.
REFER TO PAGE 6, STEP 1.

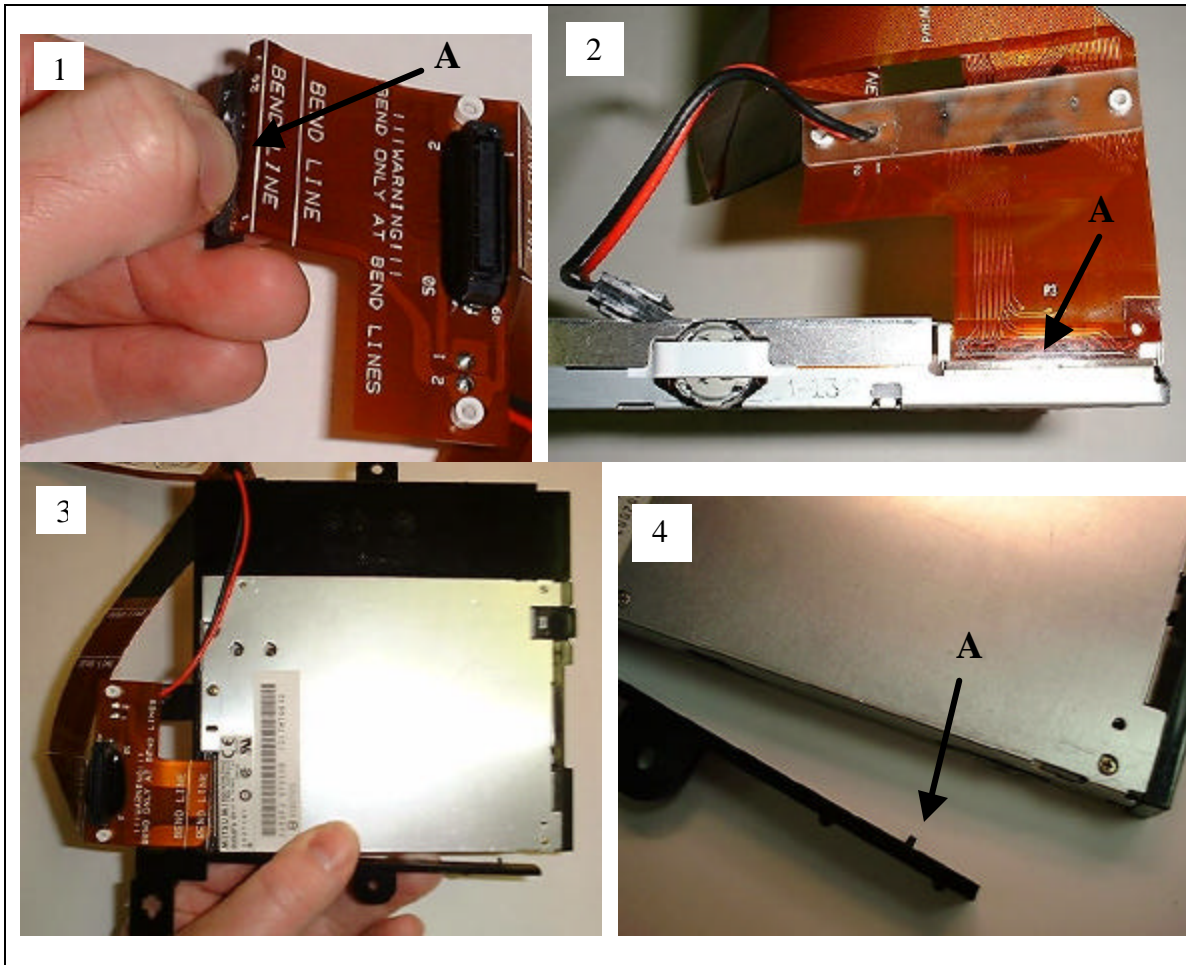
!!!WARNING!!!
DAMAGE CAN RESULT FROM
IMPROPER HANDLING.
REFER TO PAGE 2, STEP 2.



!!!WARNING!!!

Follow these instructions to avoid damage to the cable.

Installing a Floppy Drive (See Page 6 for CD-ROM Drive installation)



Drive sub-assembly work has to be done outside of the chassis.

1. Remove the pull-tab from the Floppy contacts (A). Leave tab in place for CD-ROM installation.

2. Lift the ZIF connector latch bar (A). Install cable into the ZIF connector. Ensure the cable is not cocked in the connector and push down on the ZIF latch bar. (**DO NOT** bend cable in contact area where it enters the ZIF connector. Damage to the contacts can occur.)

3. Place Floppy drive into plastic carrier.

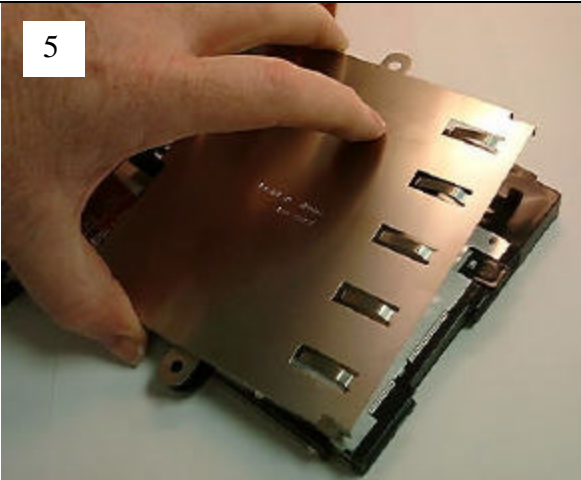
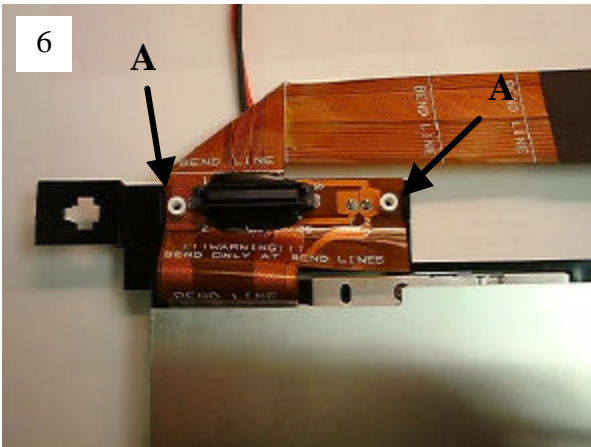
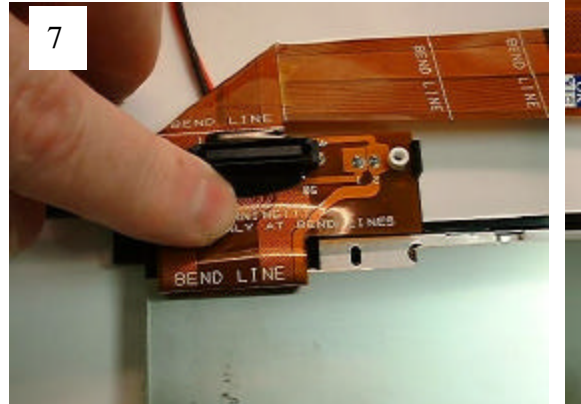
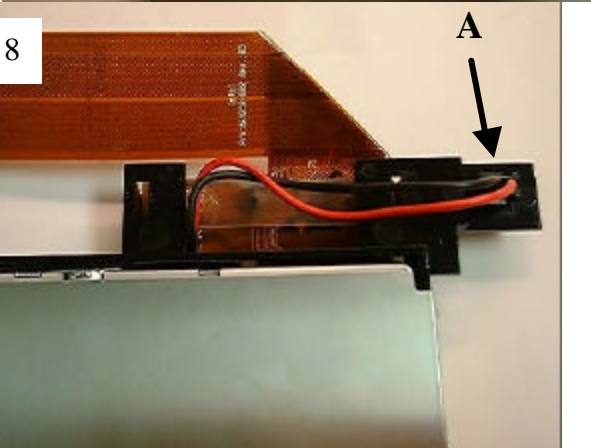
4. Align pins (A) on both sides of the carrier to fit into the screw holes of the drive for proper engagement.



!!!WARNING!!!

Follow these instructions to avoid damage to the cable.

Installing a Floppy Drive

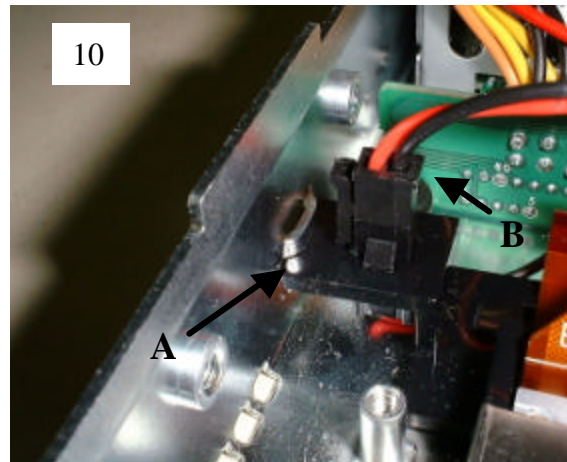
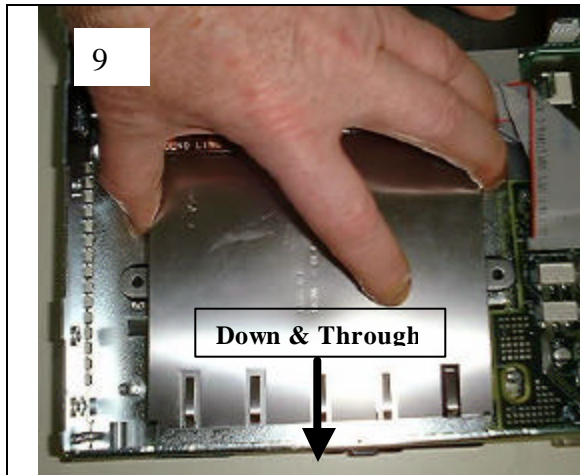
 <p>5</p>	 <p>6</p>	<p>5. Place EMI covers on top and bottom of drive (Top shown).</p> <p>6. Align the guide pins on the carrier to engage the plastic standoffs on the cable and push the cable down to snap into the latches (A).</p>
 <p>7</p>	 <p>8</p>	<p>7. Press down on the cable to put bend in the cable at the BEND LINE location.</p> <p>8. Power cable should plug into carrier opening (A) and be positioned as shown.</p>



!!!WARNING!!!

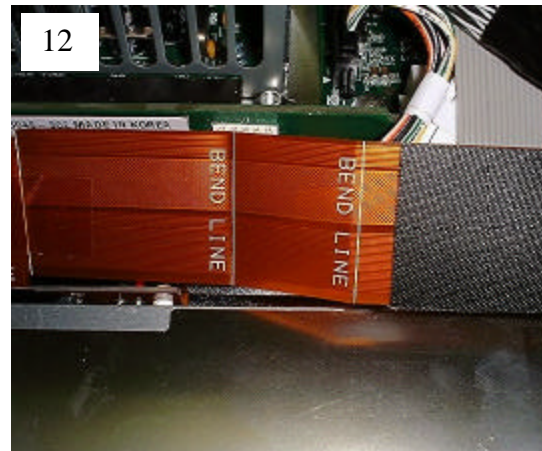
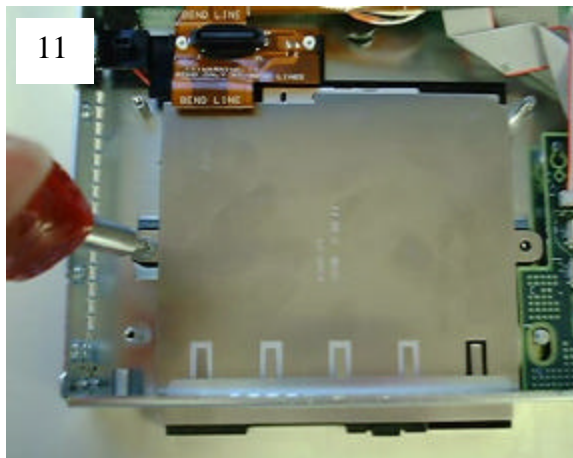
Follow these instructions to avoid damage to the cable.

Installing a Floppy Drive



9. Install drive assembly down into the top of the unit and then forward through the opening in the front of the unit as shown. **CAUTION:** Carefully install the assembly to avoid deforming the EMI top cover spring fingers.

10. If tabs are present, position the carrier to engage between the chassis tabs (A). Note: Latest carriers do not engage tabs. Plug power cable from power supply to the cable power plug on the carrier (B).



11. Secure assembly in unit using screws at the 2 carrier mounting locations.

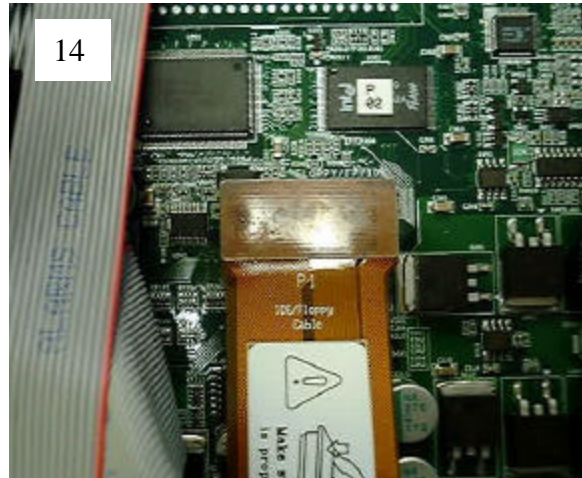
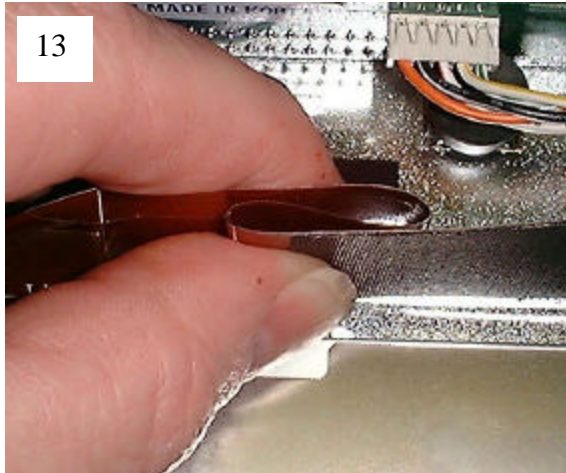
12. Notice the 2 BEND LINES shown.



!!!WARNING!!!

Follow these instructions to avoid damage to the cable.

Installing a Floppy Drive



13. Make a Z fold in the cable at the BEND LINE locations.

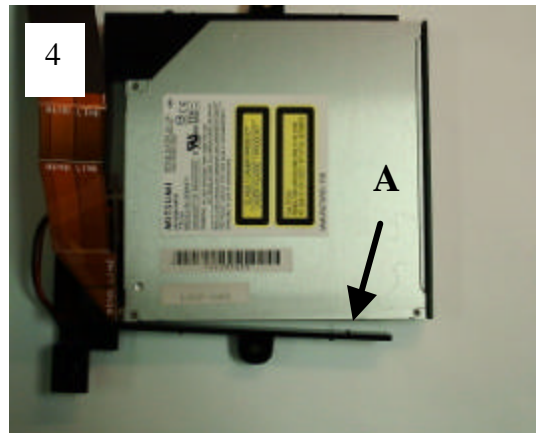
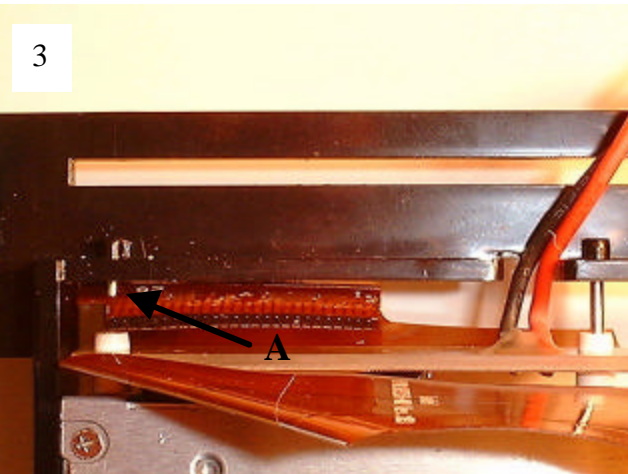
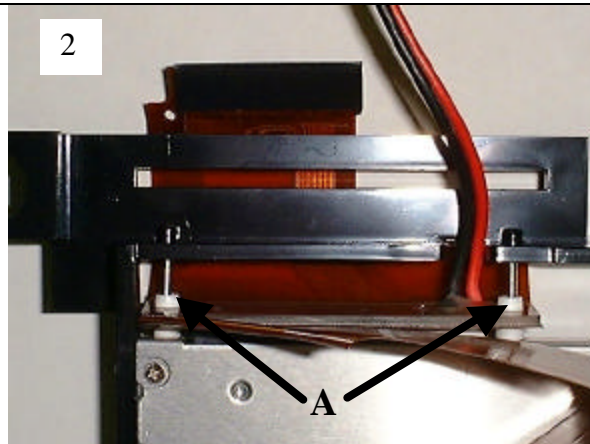
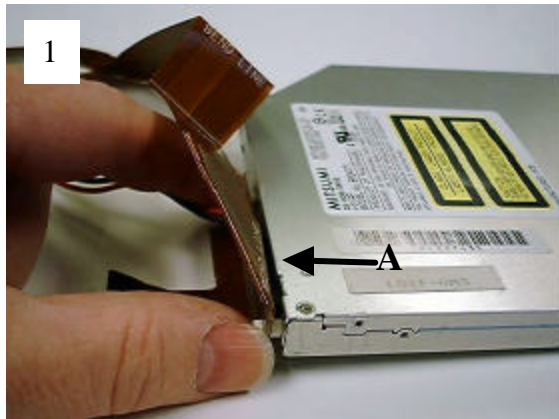
14. Plug connector onto baseboard and ensure that it is not cocked to either side.



!!!WARNING!!!

Follow these instructions to avoid damage to the cable.

Adding a CD-ROM Drive



Drive sub-assembly work has to be done outside of the chassis.

1. Carefully align the connector for the CD-ROM and plug into the drive. Bends at location (A) greater than 90 degrees can cause damage to circuit traces.

2. Place the CD-ROM drive into the plastic carrier. Make sure to align the 2 metal mounting pins on the carrier with the plastic standoffs (A) on the cable and fully insert drive into the carrier.

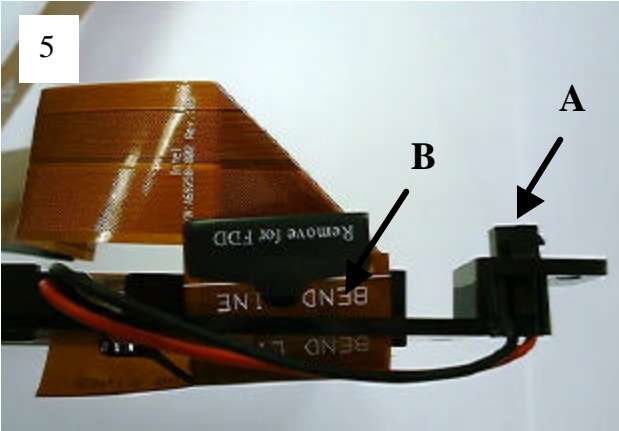
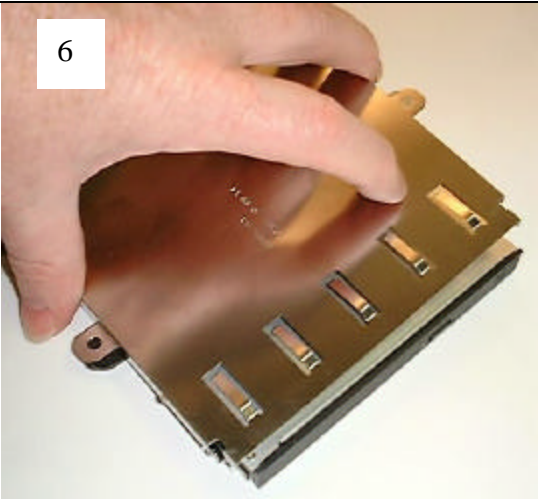
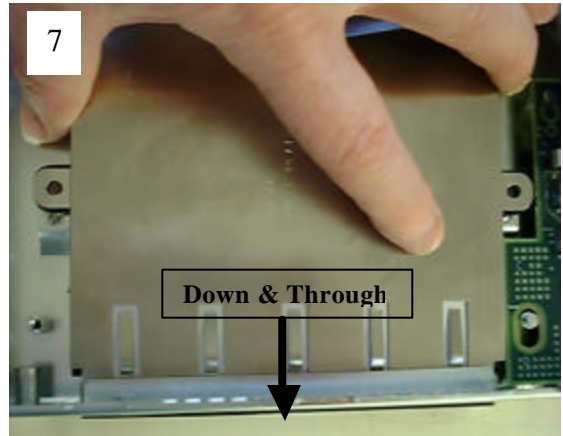
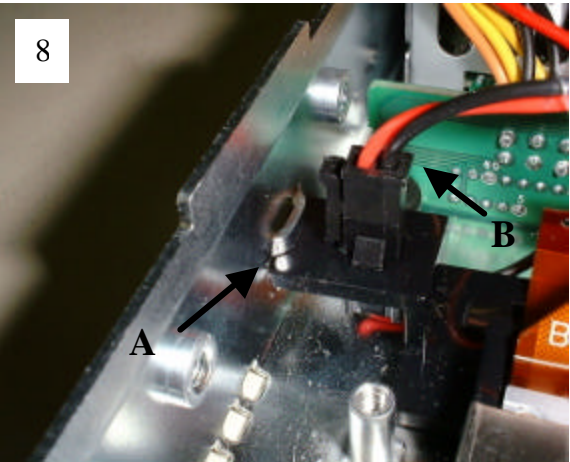
3. If no pull-tab is on the Floppy drive ZIF connector, install the cable as follows. The carrier mounting pin at location (A) should go through the mounting hole in the end of the cable as shown. This prevents the exposed ZIF contacts from potential shorting.

4. Align pin on side of the carrier (A) to fit into the screw hole of the drive for proper engagement.



!!!WARNING!!!
Follow these instructions to avoid damage to the cable.

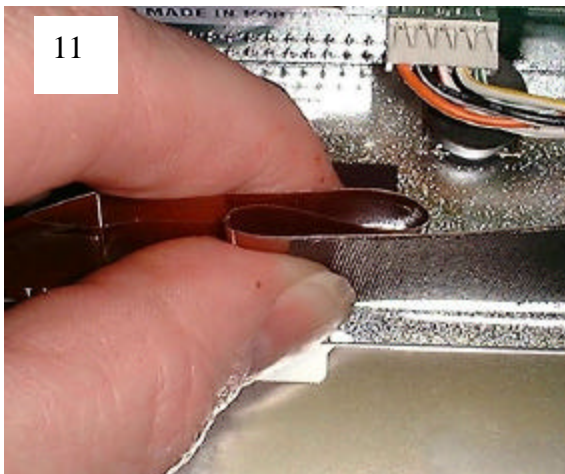
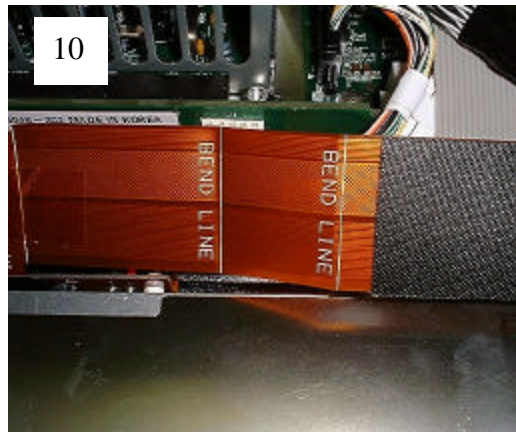
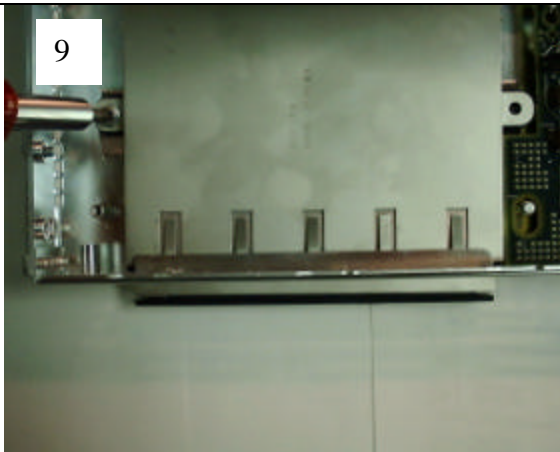
Adding a CD-ROM Drive

<p>5</p> 	<p>6</p> 	<p>5. Power cable should plug into carrier opening (A) and be positioned as shown. The end of the Flex cable should route up through the slot in carrier (B) if pull-tab is present.</p> <p>6. Place EMI covers on top and bottom of drive (Top shown).</p> <p>7. Install drive assembly down into the top of the unit and then forward through the opening in the front of the unit as shown.</p> <p>CAUTION: Carefully install the assembly to avoid deforming the EMI top cover spring fingers.</p> <p>8. If tabs are present, position the carrier to engage between the chassis tabs (A). Note: Latest carriers do not engage tabs. Plug power cable from power supply to the cable power plug on the carrier (B).</p>
<p>7</p> 	<p>8</p> 	



!!!WARNING!!!
Follow these instructions to avoid damage to the cable.

Adding a CD-ROM Drive



9. Secure assembly in unit using screws at the 2 carrier mounting locations.

10. Notice the 2 BEND LINES shown.

11. Make a Z fold in the cable at the BEND LINE locations.

12. Plug connector onto baseboard and ensure that it is not cocked to either side.

