



This Action Alert describes an issue which may or may not affect the customer's product

Intel Action Alert

AA-0842-1

5200 NE Elam Young Parkway
Hillsboro, OR 97124

October 9, 2006

Electromagnetic Conformance change required for Intel® Remote Management Module NIC

*Information in this document is provided in connection with Intel products. No license, express or implied, by estoppel or otherwise, to any intellectual property rights is granted by this document. Except as provided in Intel's Terms and Conditions of Sale for such products, Intel assumes no liability whatsoever, and Intel disclaims any express or implied warranty, relating to sale and/or use of Intel products including liability or warranties relating to fitness for a particular purpose, merchantability, or infringement of any patent, copyright or other intellectual property right. Intel products are not intended for use in medical, life saving, or life sustaining applications. Intel may make changes to specifications and product descriptions at any time, without notice. The **Intel® Remote Management Module** may contain design defects or errors known as errata which may cause the product to deviate from published specifications. Current characterized errata are available on request.*

Products Affected

Intel® Remote Management Module
Product Code AXRMM

Description

Modification is required when installing the Network Interface Card (NIC) module of the Intel® Remote Management Module (Intel® RMM) so it will be compliant with Electromagnetic Conformance requirements. Users must follow the steps in this document to reduce Electromagnetic Interference (EMI).

The steps outlined in this document should be followed when installing the Intel RMM NIC into an Intel® Server Chassis SR1500, SR1550, SR2500, SC5400, SC5299-E, or any chassis that requires the use of the PCI bracket to mount the Intel RMM NIC.

In addition to the Intel RMM and the Intel RMM NIC, each box contains a clear plastic bag that holds mounting hardware for all chassis configurations. The bag contents include cabling, plastic standoffs, screws, PCI bracket and EMI gasket. See the following sections for information concerning various chassis installations.

Root Cause

Intel testing has determined that additional EMI protection is required when installing the Intel® RMM NIC module. EMC requirements will not be met without the modification outlined in this Action Alert.

Corrective Action / Resolution

Installation in Intel® Server Chassis SC5400, SC5299-E and other pedestal configurations

This section provides the steps to correctly install the Intel RMM NIC module into pedestal chassis configurations to reduce EMI emissions. Figure 1 shows the PCI bracket, EMI gasket, and Intel RMM NIC module that will be used for this installation.

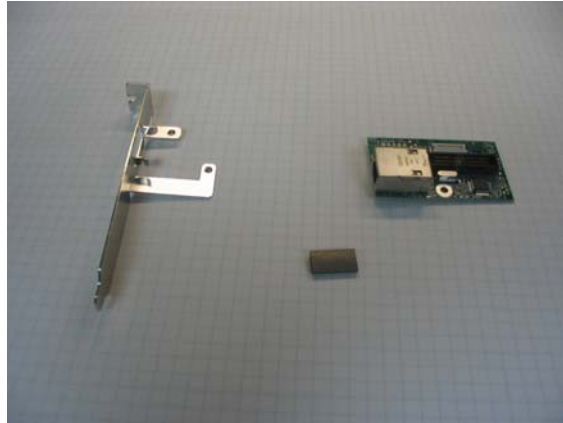


Figure 1 – PCI bracket, EMI gasket and NIC

Modification and installation of the EMI gasket will allow compliance with EMC requirements. Use the following steps for proper installation.

- 1- Locate the EMI gasket. It is approximately 3/4" (2mm) long and 3/8" (1mm) wide.
- 2- Cut the EMI gasket in half across the short side. See Figure 2.
- 3- Place the EMI gasket between the ear of the PCI bracket and the RJ-45 connector on the NIC module. Fasten the NIC module to the bracket using the screws provided. See Figure 3.

IMPORTANT NOTE: Place the EMI gasket only as shown in Figure 3. DO NOT place the EMI gasket on the side of the RJ-45 near exposed components. Damage may occur if the EMI gasket is placed near exposed components.

- 4- Mount the PCI bracket into the chassis and complete the Intel® RMM installation following the instructions in the Quick Start Users Guide. <http://support.intel.com/support/motherboards/server/s5000psl/sb/CS-022629.htm>
View the back side of the guide.

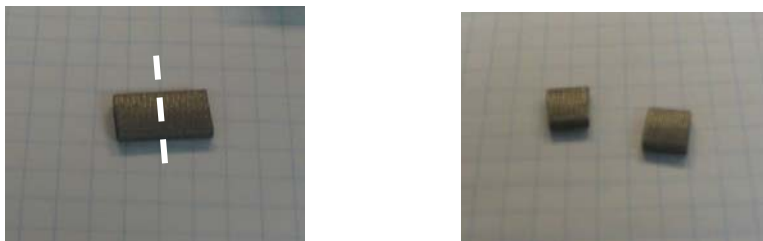


Figure 2 – Cutting the EMI gasket

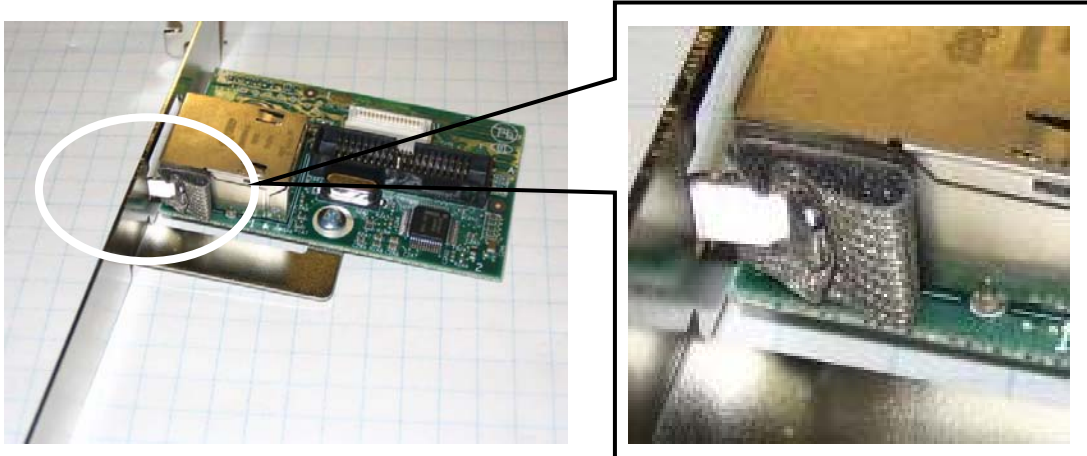


Figure 3 – Properly placing the EMI gasket

Installation in Intel® Server Chassis SR1500, SR1550 or SR2500

This section provides the steps to correctly install the NIC module in 1U or 2U chassis configurations to reduce EMI emissions. Figure 4 shows the EMI gasket, standoffs and NIC module that will be used for this type of installation.



Figure 4 – NIC module, plastic standoffs and EMI gasket

Installation of the EMI gasket will allow compliance with EMC requirements. Use the following steps for proper installation.

- 1- Locate the EMI gasket. It is approximately 3/4" (2mm) long and 3/8" (1mm) wide.
- 2- Using the adhesive strip on the EMI gasket, attach it to the RJ-45 connector on the NIC module. See Figure 5.
- 3- Install two plastic standoffs into the server board and remove the filler plate from the chassis opening. See Figure 6.
- 4- Mount the NIC module onto the standoffs as shown in Figure 7. In this chassis configuration the EMI gasket will be between the RJ-45 connector and the chassis base. Complete the Intel® RMM installation following the instructions in the Quick Start Users Guide. <http://support.intel.com/support/motherboards/server/s5000pal/sb/CS-022662.htm>. You will see several versions of the Quick Start Users Guide. They are all identical for installing the Intel® RMM. View the back side of any of the guides.

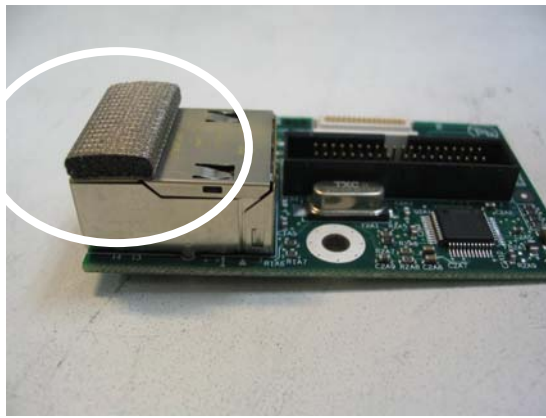
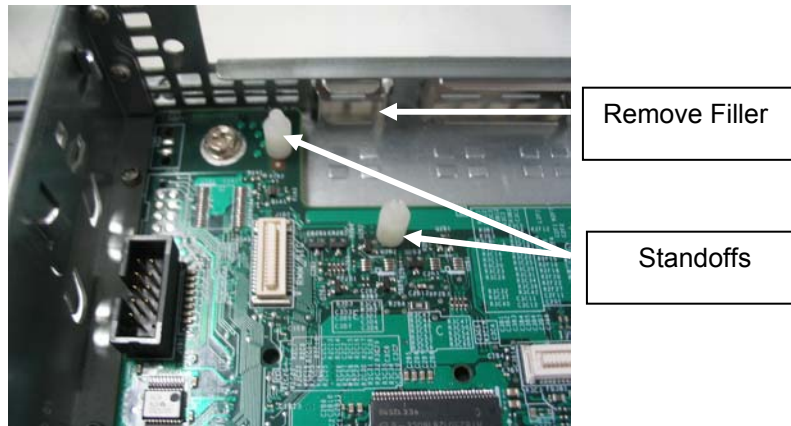


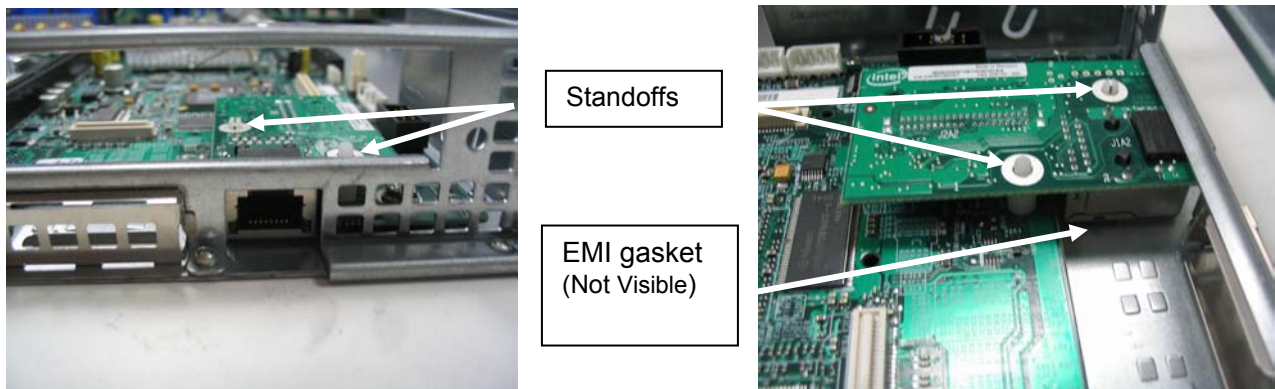
Figure 5 – Attaching EMI gasket to RJ-45



Remove Filler

Standoffs

Figure 6 – Standoff position and filler removal



Standoffs

EMI gasket
(Not Visible)

Figure 7 – NIC module mounted to server board using standoffs

Please contact your Intel Sales Representative if you require more specific information about this issue.

Enterprise Platforms & Services Division
Intel Corporation