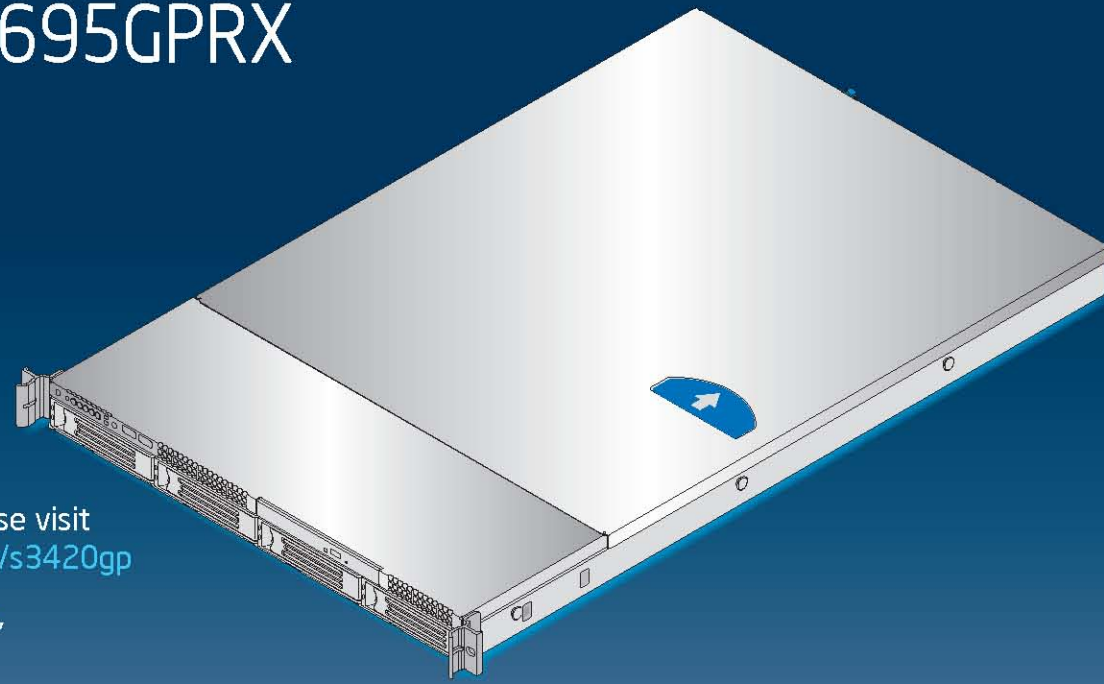


Intel® Server System SR1695GPRX Quick Start User's Guide



Thank you for buying the Intel® Server System SR1695GPRX. The following information will help you set up and configure your new server system.

For details on this server system and for toolkit CD, please visit http://www.intel.com/p/en_US/support/highlights/server/s3420gp

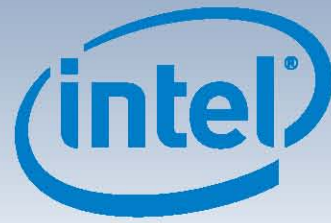
When installing the server board into a reference chassis, refer to the reference chassis instructions.

User Guides are also available on the Intel® Server Deployment Toolkit CD that accompanied your Intel® Server System SR1695GPRX.

If you are not familiar with ESD (Electrostatic Discharge) procedures used during system integration, please see the Intel® Server System SR1695GPRX Service Guide, available on the Intel® Server Deployment Toolkit CD or at http://www.intel.com/p/en_US/support/highlights/server/s3420gp.

Please boot to the Intel® Server Deployment Toolkit CD first for BIOS and firmware configuration and updates.

Read all cautions and warnings first before starting your server system integration.



Minimum Hardware Requirements

To avoid integration difficulties and possible board damage, your system must meet the following minimum requirements:

- Processors: Intel® Xeon® 3400 Series Processor or Intel® Core™ i3® Processor with compatible heat sink.
- Memory Type: One 1066/1333 MHz ECC unbuffered (UDIMM) or ECC Registered (RDIMM) DDR3.
- Power: Minimum 1 integrated power supply.

Fastener Identification Guide

- #6-32 for 3.5" HDD in step 8-3A
- M3 for 2.5" HDD in step 8-2A

1 Preparing the Chassis

If using a non-Intel server chassis, refer to the documentation that came with your chassis for preparatory steps.

Observe normal ESD (ElectroStatic Discharge) procedures.

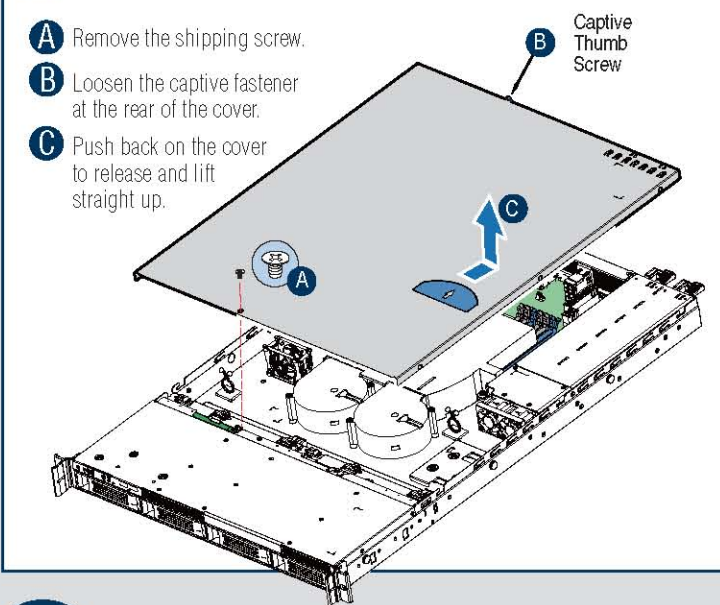


Place your Intel® Server System on a flat anti-static surface to perform the following integration procedures.

Always touch the chassis frame first, before reaching inside to make server board connections or to install other components.

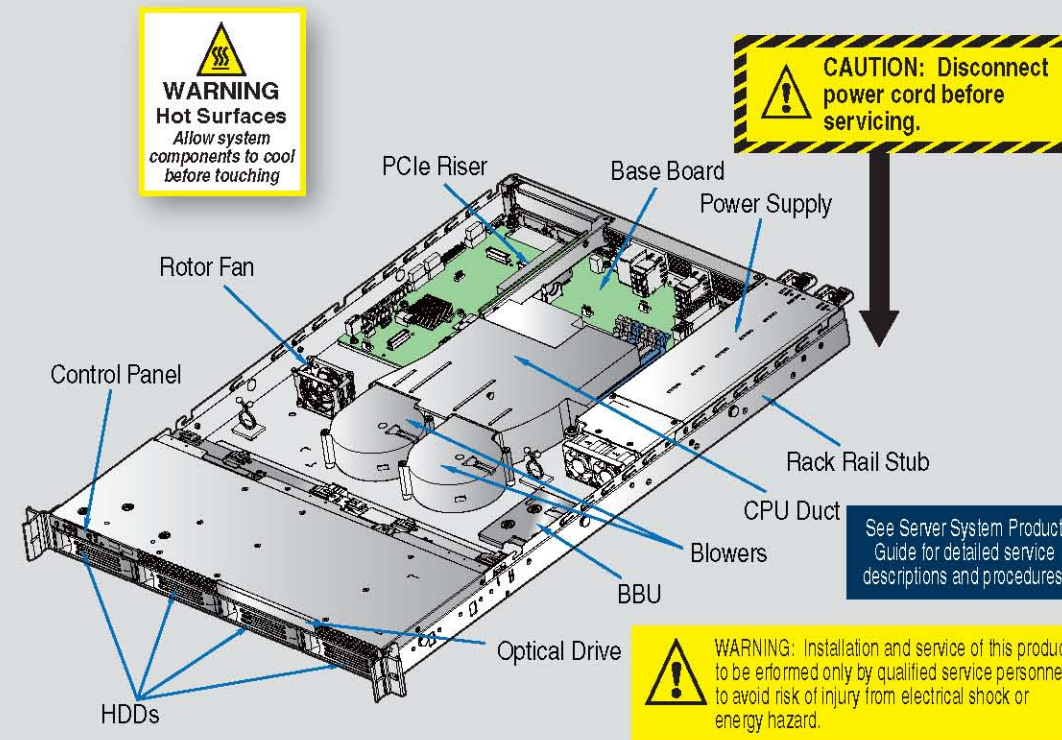
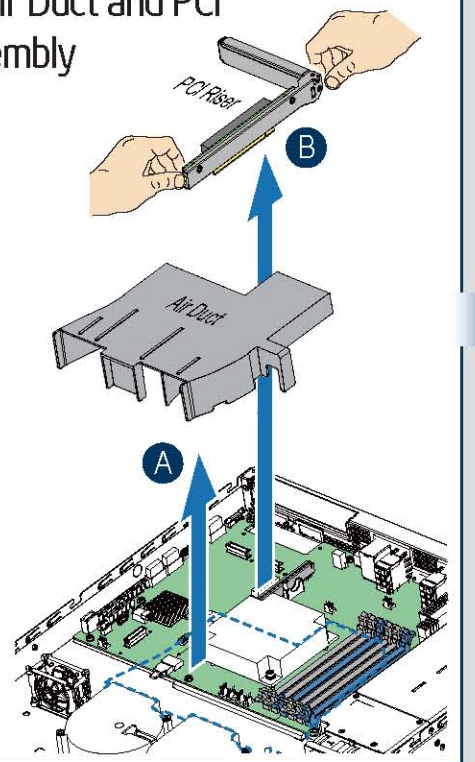
2 Remove the Top Cover

- Remove the shipping screw.
- Loosen the captive fastener at the rear of the cover.
- Push back on the cover to release and lift straight up.



3 Remove Air Duct and PCI Riser Assembly

- Remove air duct by lifting straight up.
- Remove PCI riser assembly by grasping with both hands and carefully lifting straight up to disengage riser card from the server board socket.



Warning

Read all caution and safety statements in this document before performing any of the instructions. Also see the *Intel® Server Board and Server Chassis Safety Information* document at: <http://support.intel.com/support/motherboards/server/sb/cs-010770.htm> for complete safety information.

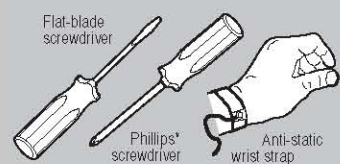
Warning

Installation and service of this product should only be performed by qualified service personnel to avoid risk of injury from electrical shock or energy hazard.

Caution

Observe normal ESD [Electrostatic Discharge] procedures during system integration to avoid possible damage to server board and/or other components.

Tools Required



Intel is a registered trademark of Intel Corporation or its subsidiaries in the United States and other countries. Other names and brands may be claimed as the property of others. Copyright © 2010, Intel Corporation. All rights reserved.

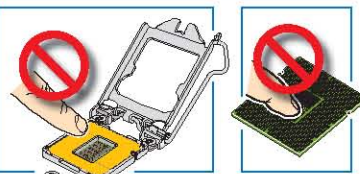
G11547-002



4 Install the Processor

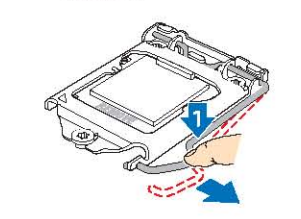
Cautions:

- When removing the protective cover, DO NOT TOUCH the gold socket wires.
- To avoid damage, DO NOT DROP the cover onto the socket wires or components.
- When unpacking a processor, hold by the edges only to avoid touching the gold contact wires.



A. Open the Socket Lever

- Push the lever handle down and away from the socket to release it.



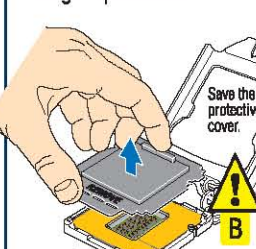
B. Open the Load Plate

- Open the load plate as shown.



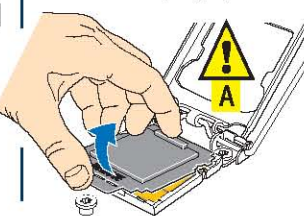
D. Remove the Cover

- Carefully lift the cover straight up as shown.



C. Disengage the Cover

- Place thumb and finger as shown and tilt up slightly at front.



E. Unpack the Processor

- Carefully remove protective cover as shown.



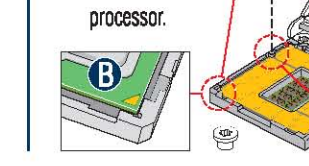
F. Install the Processor

- CAUTION: The underside of the processor has components that may damage the socket wires if installed improperly.

Processor must align correctly with the socket opening before installation. DO NOT DROP processor into socket!

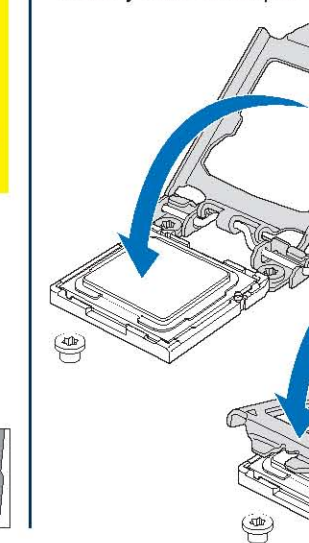
- Orient the processor with the socket so that the processor cutouts match the two socket pins.

- Note location of gold key at corner of processor.



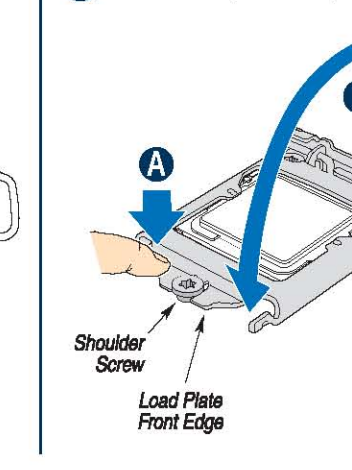
G. Close the Load Plate

- Carefully lower the load plate over the processor.



H. Engage the Load Plate

- Make sure the front edge of the load plate slides under the shoulder screw as the lever is lowered.
- Close the load plate locking lever.

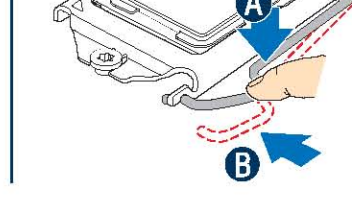


I. Latch the Locking Lever

- Push down on the locking lever.

CAUTION: DO NOT damage the server board with the tip of the locking lever.

- Slide the tip of the lever under the notch in the load plate. Make sure the lever is securely latched.



5 Install Heat Sink

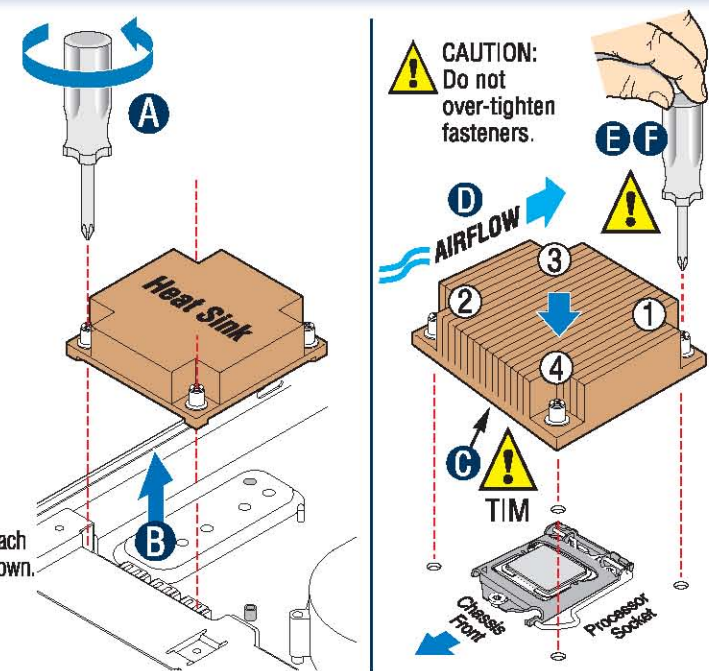
- Loosen the three captive fasteners securing the heat sink to the chassis.
- Remove heat sink from the shipping position.

- CAUTION: The heat sink has thermal interface material (TIM) on the underside of it. Use caution so that you do not damage the thermal interface material. Use gloves to avoid sharp edges.
- Remove the protective film on the TIM if present.

- Align heat sink fins to the front and back of the chassis for correct airflow. Airflow goes from front-to-back of chassis.

The heat sink has four captive fasteners and should be tightened using the following procedure:

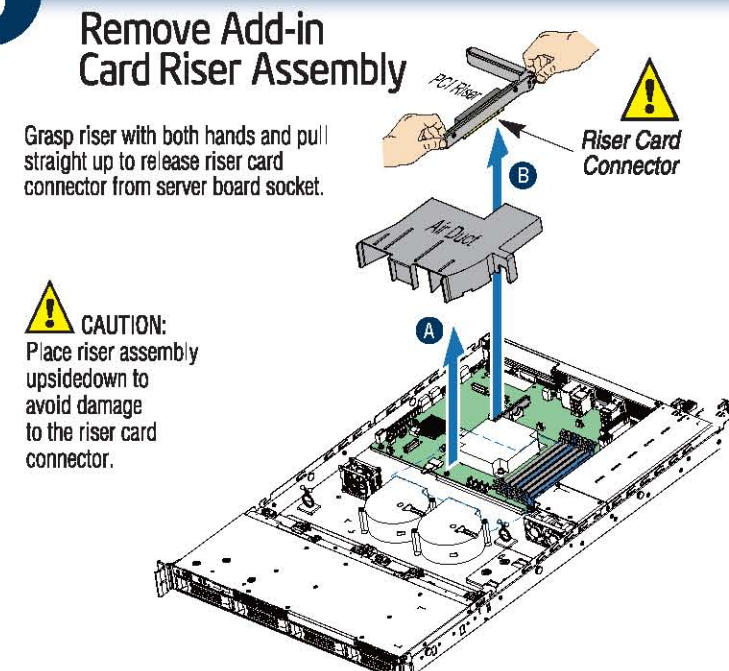
- Using a #2 Phillips® screwdriver, finger-tighten each fastener diagonally, according to the numbers shown.
- Securely re-tighten each fastener again in the same order as performed in Step E.



6 Remove Add-in Card Riser Assembly

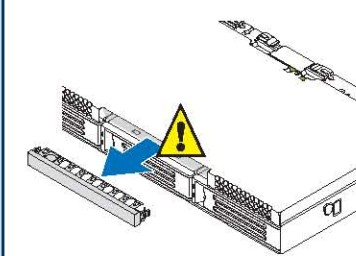
Grasp riser with both hands and pull straight up to release riser card connector from server board socket.

- CAUTION: Place riser assembly upside-down to avoid damage to the riser card connector.



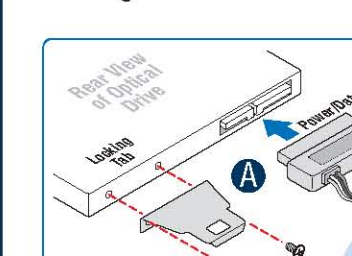
7 Install Optical Drive

1. Remove the Filler Panel



- CAUTION: To maintain proper system cooling, a filler blank must be installed if you do not install a device at this location.

2. Configure Rear of Drive



- Attach the metal locking tab and connect the combined power/data end of the cable to the optical drive as shown.

3. Install Optical Device Assembly into Chassis

- Insert the combined power/data cable into the chassis opening, then insert the drive all the way until the locking tab snaps into place.
- Slide the cables into the cable retention clip on top of the backplane bracket as shown.

IMPORTANT NOTE: Refer to the Cabling Diagram below for connection locations and cable routing.

