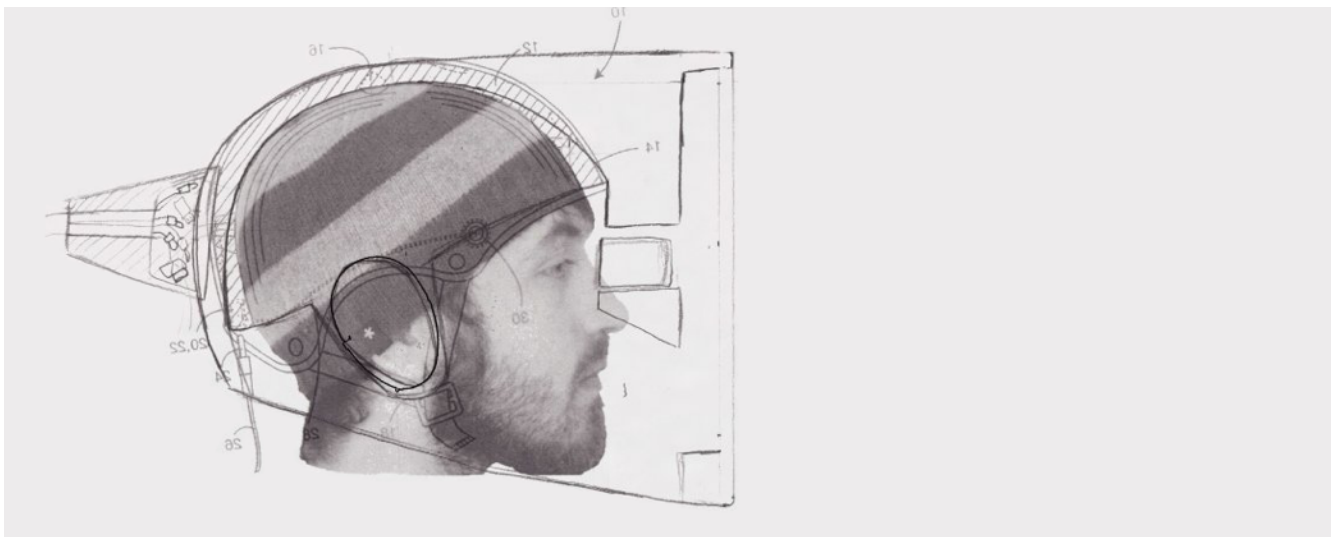
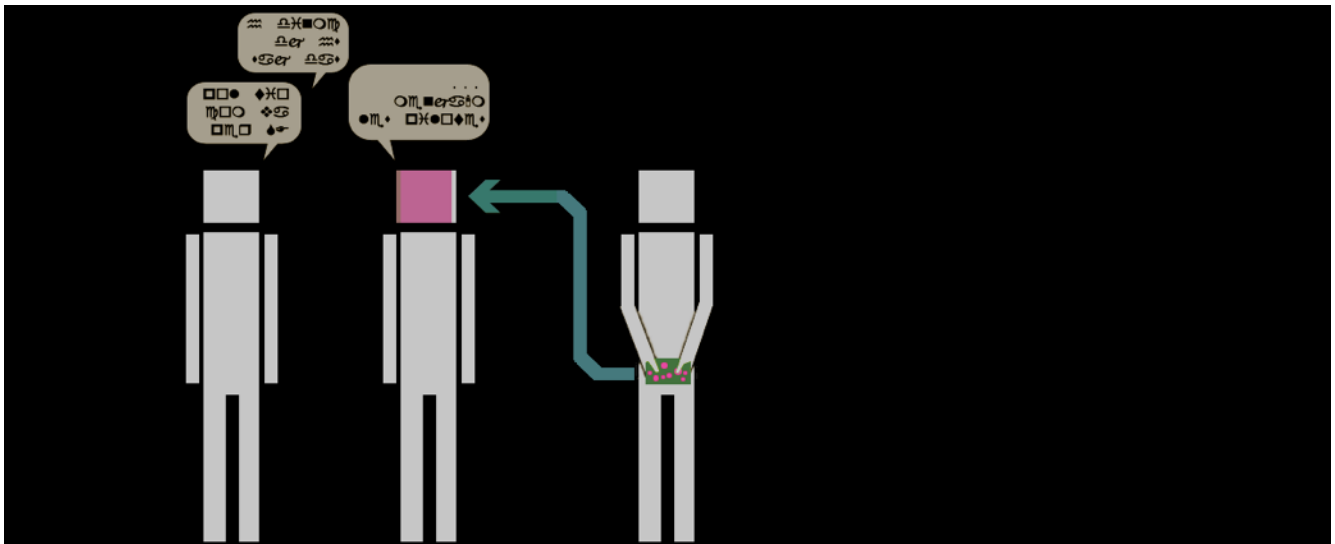


## EXPRESSION DISPATCHER

Expression Dispatcher proposes an alternative to real life communication. A remote controlled electronic device assists in people's expressive tasks, removing ambiguity, dropping down the infinite range of meaningful possibilities, and delegating the whole process to a third party. An expert.

Human - human interaction is as old as the human being itself. Even with thousands of centuries of experience, we are still far from being masters of communication. This last century has brought new technologies that have had a huge impact in the field of interpersonal communication, but real life communication remains the same. Through experimentation, this project aims to explore tangent roles of technology in this field looking at the experience we've got in the non-face-to-face, and the non-real-time communication area. Real experiments let us know how other people behave when interacting with the subject being assisted and, obviously, how the person being assisted behaves in this symbiosis.





royal college of art

gerard rallo