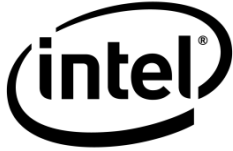


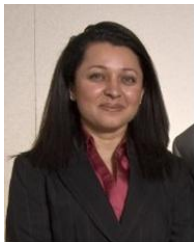
Intel Corporation
2200 Mission College Blvd.
Santa Clara, CA 95054-1549



Speaker Bio

Intel Corporation

Renu Navale
Senior Strategy and Planning Manager, Software and Solutions, Embedded and Communications Group
Intel Corporation



Renu Navale is a senior strategy and planning manager for Software and Solutions in the Embedded and Communications Group in Intel.

With over fifteen years in the High-Tech Industry, Renu has extensive experience in Telecommunications, Wireless, and Semiconductors. She leads several Strategic and Business Planning initiatives at Intel. She has also worked as a senior segment marketing and senior product marketing manager at Intel, responsible for Platform and Technology Solutions Marketing for Processors targeting the Embedded and

Communications markets.

Before joining Intel, Renu worked as a senior software engineer at Alcatel-Lucent on Wireless, VOIP, ATM, ADSL, Element and Network Management technologies. She was a recipient of the 2003 Lucent Technologies Reaching New Heights Recognition Award as well as two Lucent Software Awards for Design and Development Innovation. She has also published at the Computer Software and Applications Conference on wireless technologies.

Renu holds an Executive MBA in Global Management from the Thunderbird, School of Global Management (May '08), a Master of Computer Science Degree from Arizona State University and a Bachelor of Engineering Degree in Computer Science from Bangalore University, India.