



Intel[®] Pentium[®] III Processor with 512KB L2 Cache Bus Terminator Design Guide

Order Number 249661-001

Release Date: June 2001

Information in this document is provided in connection with Intel® products. No license, express or implied, by estoppel or otherwise, to any intellectual property rights is granted by this document. Except as provided in Intel's Terms and Conditions of Sale for such products, Intel assumes no liability whatsoever, and Intel disclaims any express or implied warranty, relating to sale and/or use of Intel® products including liability or warranties relating to fitness for a particular purpose, merchantability, or infringement of any patent, copyright or other intellectual property right. Intel products are not intended for use in medical, life saving, or life sustaining applications.

Intel may make changes to specifications and product descriptions at any time, without notice.

Designers must not rely on the absence or characteristics of any features or instructions marked "reserved" or "undefined." Intel reserves these for future definition and shall have no responsibility whatsoever for conflicts or incompatibilities arising from future changes to them.

This document contains information on products in the design phase of development. Do not finalize a design with this information. Revised information will be published when the product is available. Verify with your local sales office that you have the latest datasheet before finalizing a design.

Intel processors may contain design defects or errors known as errata, which may cause the product to deviate from published specifications. Current characterized errata are available on request.

Copyright © Intel Corporation 2001.

*Other brands and names are the property of their respective owners.

TABLE OF CONTENTS

1.0 Introduction	6
1.1 Terminology	6
1.2 Supported Platforms	6
2.0 Termination Package Reference Schematics	6
3.0 Stack-up	12
4.0 AGTL/AGTL+ Bus Guidelines	13
5.0 Termination Package Physical Description	15
6.0 Termination Package Retention	15

(intentionally blank)

1.0 INTRODUCTION

Intel® Pentium® III processors have termination circuitry for the processor's AGTL/AGTL+ bus. In a dual-processor platform, each end of the bus must be properly terminated, whether or not both processor socket locations have processors installed. This document describes the design considerations for a PGA370 termination package to occupy the second PGA370 socket location and terminate the bus when there is only one processor installed in a dual-processor platform.

Although there are other possible methods to implement a bus termination package, Intel® recommends that designs adhere to the bus guidelines in Section 3. The resistor and decoupling network schematics in this document are examples only. Other resistor and decoupling designs are also feasible. This document does not provide detail on variations to the specific design solution presented.

1.1 Terminology

- Intel® Pentium® III processor with 512KB L2 Cache --- The next generation of Pentium® III processors. These processors have a CPUID of 06Bxh and support only the lower AGTL (1.25V) system bus termination voltage.
- Pentium® III processor with AGTL+-only support (CPUID 068xh) --- The legacy Pentium® III processors. These processors have 256KB of L2 cache and support only the original AGTL+ (1.5V) system bus termination voltage.
- Pentium® III processor with AGTL/AGTL+ support (CPUID 068xh) --- These processors are derived from the legacy Pentium® III processor core. These processors have 256KB of L2 cache and support both the AGTL (1.25V) and AGTL+ (1.5V) system bus termination voltages.

1.2 Supported Platforms

While these new termination cards were designed specifically to support platforms utilizing the Intel® Pentium® III processors with 512KB L2 Cache or Pentium III processors with AGTL support (CPUID 068xh) or Pentium® III processors with AGTL/AGTL+ support (CPUID 068xh), there is nothing precluding these designs from terminating properly in legacy dual-processor Pentium III processor with AGTL+-only support (CPUID 068xh) platforms. These termination cards will **NOT** function in dual-processor platforms designed to support both Intel® Pentium® III processors with 512KB L2 Cache and Pentium® III processors with AGTL+-only support (CPUID 068xh).

2.0 TERMINATION PACKAGE REFERENCE SCHEMATICS

Figure 1 shows the names of the corresponding signals that interface through the PGA370 socket.

Figures 2 and 3 are examples of 68-ohm termination resistor networks implemented with four-resistor packages that have two separate connections for each resistor element. Note that the maximum power for each resistor is 0.06 W (i.e., 0.20 W/four-pack of resistors) and that this is the maximum power per resistor that will need to be dissipated.

Figure 4 is a capacitor decoupling network between V_{TT} and ground to prevent V_{TT} noise interference (voltage drop) on the bus signals. This interference is caused by the potentially large current draw through the V_{TT} power distribution plane (or trace) to the termination resistors.

The following six pins on the termination card need to be modified from legacy termination cards that supported platforms with AGTL+ bus only:

<u>PIN #</u>	<u>AGTL+ TERM CARD PINS</u>	<u>AGTL/AGTL+ TERM CARD PINS</u>
AN3	GND	NC
AL1	GND	NC
AK4	GND	NC
AJ3	GND	NC
AK36	GND	NC
Y33	CLKREF	BCLK#/CLKREF (Add 1 pf cap to GND)

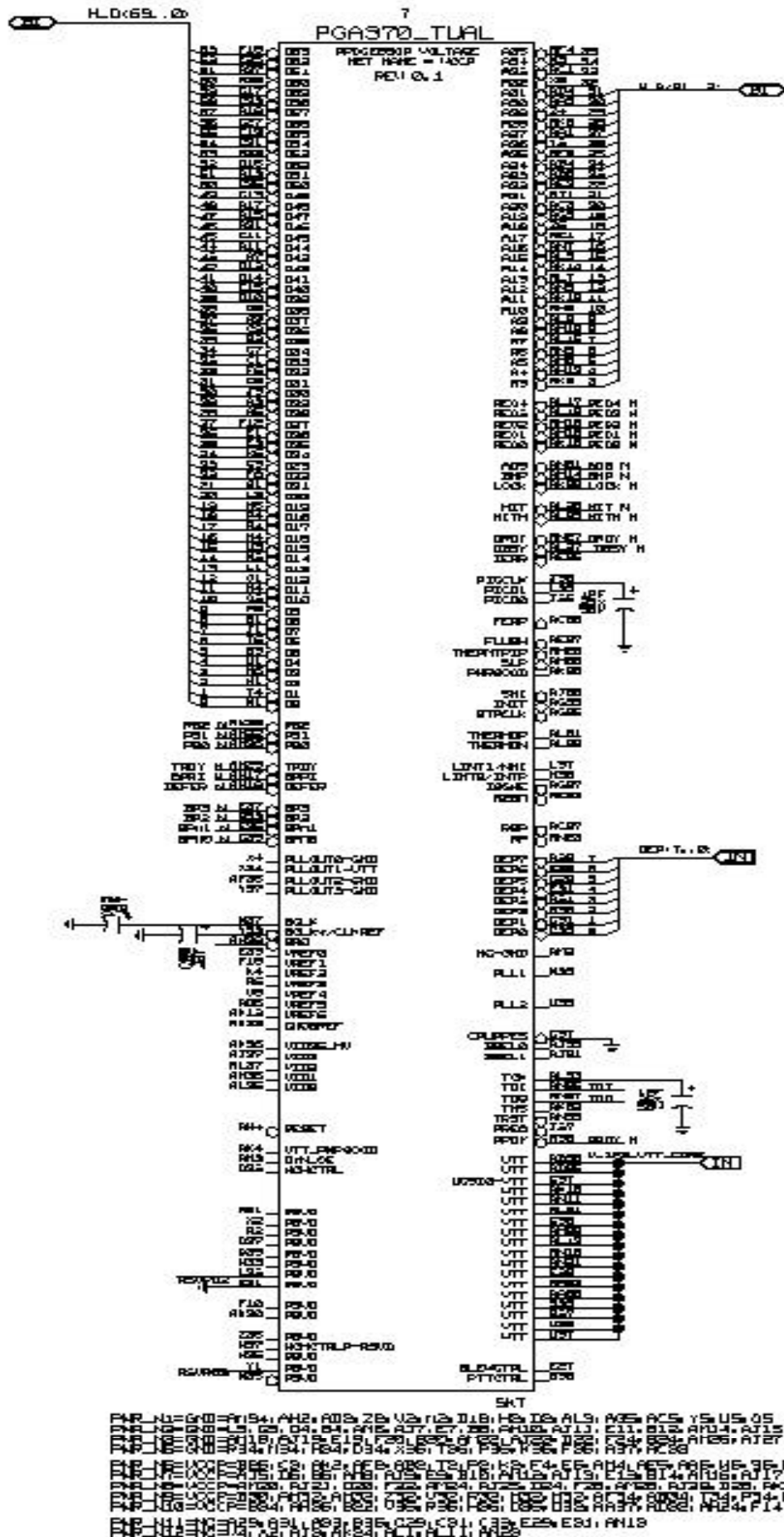


Figure 1 Signals on PGA370 Connector

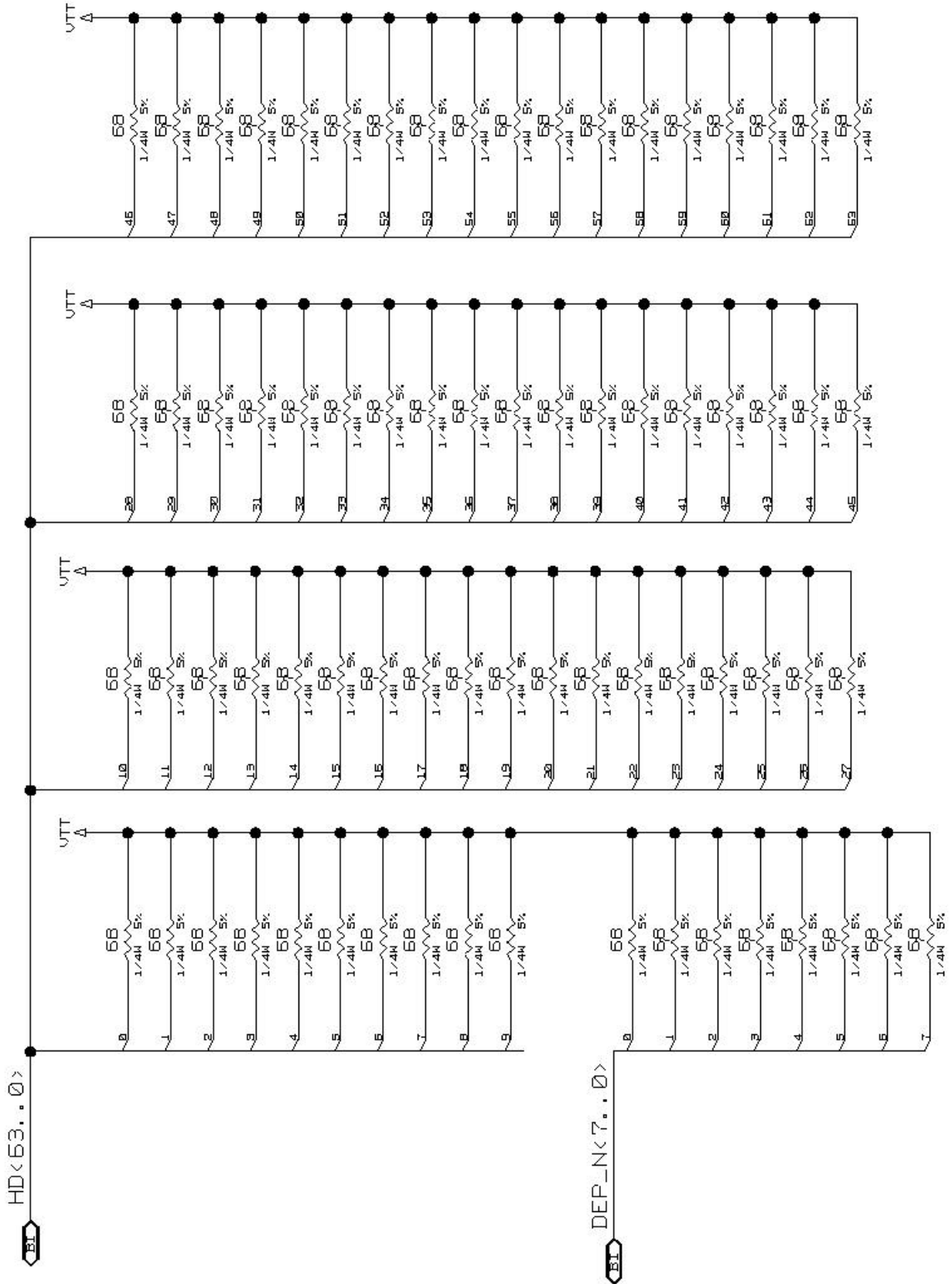


FIGURE 2 68-OHM TERMINATION RESISTORS

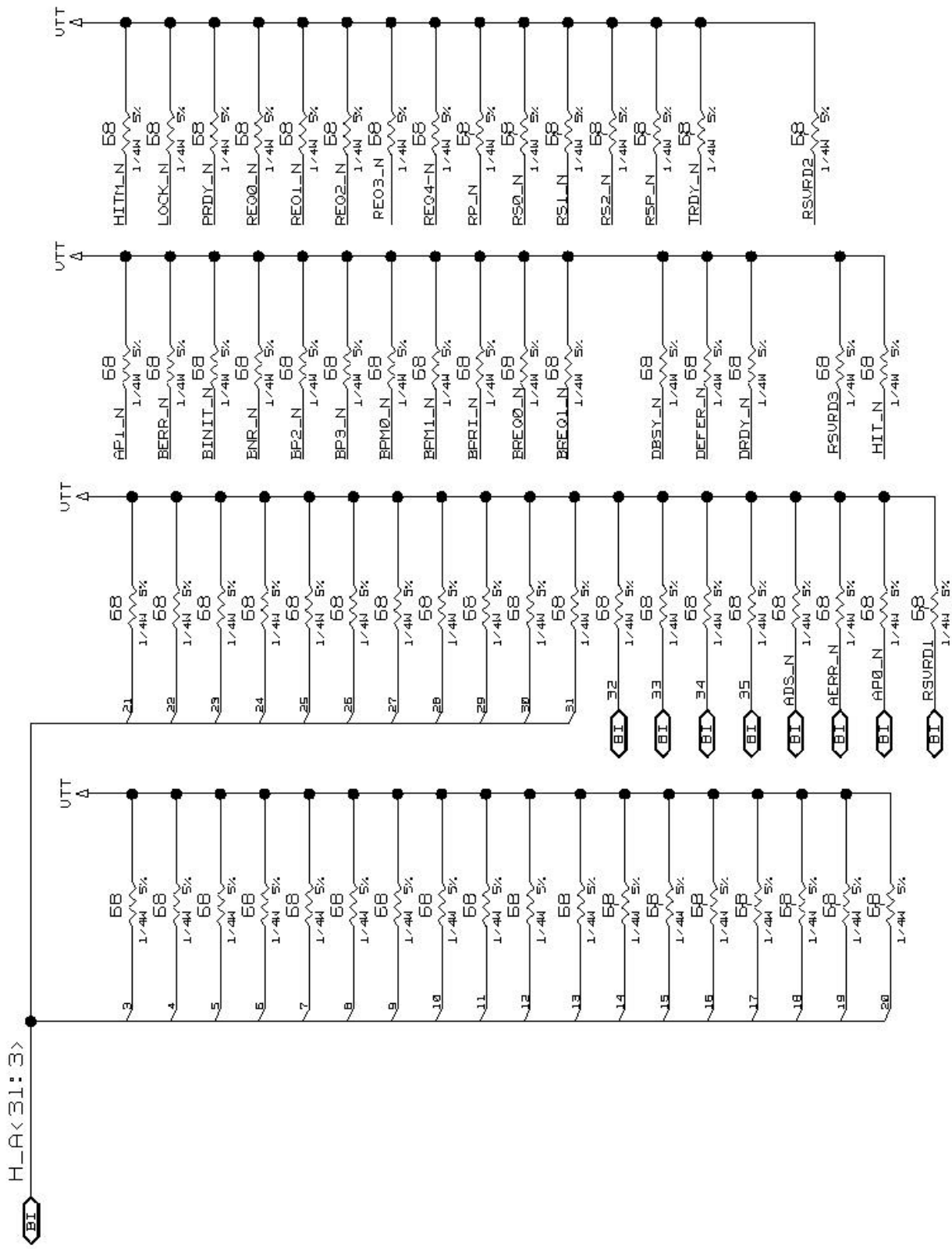


FIGURE 3 68-OHM TERMINATION RESISTORS

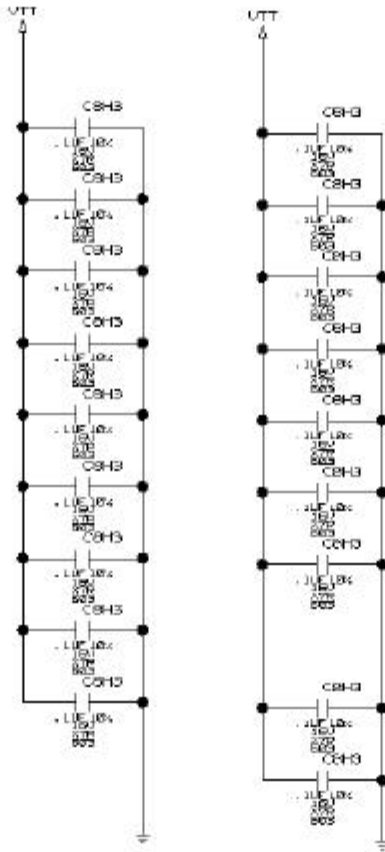


FIGURE 4 TERMINATION DECOUPLING

3.0 Stack-up

This section defines the thickness and functionality (type) of each layer. The section on routing provides specific routing rules for each group of nets. The preferable stack-up is a 4-layer substrate (shown in Figure 5, below). The thicknesses of the metal and dielectric layers are given in Table 1 below. These thicknesses are representative and can be altered by various substrate suppliers as long as the characteristic impedance (Z_0) target of 60 Ohms \pm 15% is met. The total thickness of the substrate shall be 0.063 + 0.007/- 0.005 inches.

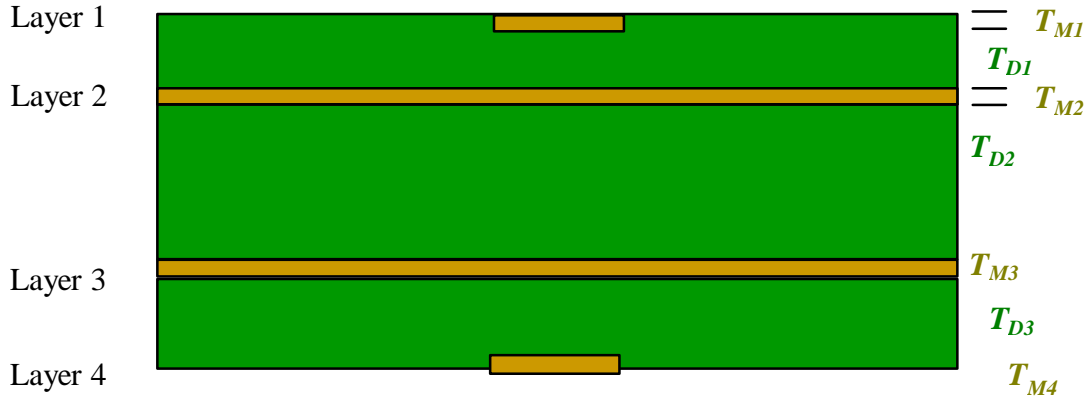


Figure 5 Reference Substrate Stack-Up

Material		Thickness (mils)	Layer Type
Metal: 1-oz copper	T_{M1}	1.4	Signal 1
Dielectric: PRE-PREG	T_{D1}	6.0*	
Metal: 1-oz copper	T_{M2}	1.4	VCCT
Dielectric: FR4-CORE	T_{D2}	44.0*	
Metal: 1-oz copper	T_{M3}	1.4	GND
Dielectric: PRE-PREG	T_{D3}	6.0*	
Metal: 1-oz copper	T_{M4}	1.4	Signal 2

Table 1: Thickness of Metals and Dielectrics of the Substrate Stack-Up

*This can be whatever thickness is required to reach a target Z_0 of 60 Ohms. Even the copper thickness can be 0.5 oz as long as Z_0 condition is met. The total board thickness is to be 62 mils. If this is less than 62 mils, the FR4-CORE thickness can be decreased accordingly.

4.0 AGTL/AGTL+ Bus Guidelines

The design should follow the AGTL+ layout guidelines specified in the *Pentium® II Processor GTL+ Guidelines*. Some of these guidelines include:

- Use a four layer stack-up to get the desired controlled impedance. Route the highest frequency signal traces on the bottom signal layer (BCLK is a must). The ground plane will prevent the signals on the bottom from radiating during EMI testing.
- Limit trace routing on the package from 0.1 to 1.0 inch.
- Add a 1 pF capacitor to the ends of the BCLK, PICCLK, and TCLK clock lines, after 0.5" to 1" of trace.
- Distribute V_{TT} by a dedicated plane. A plane is recommended; however, a 50 mil minimum width trace may also be used.
- Closely control the characteristic line impedance, Z_0 , to a 51 - 69 Ohm range. A ground plane will be needed to maintain the proper characteristic line impedance. This impedance reflects the motherboard target impedance for the Pentium® III processor.
- The 35 R-packs (for terminating ~140 AGTL/AGTL+ lines) must be distributed equally on either side of the substrate inside the socket cavity area with a minimum spacing of 125 mils from the pins on the secondary side. The capacitors must also be distributed equally. Due to space constraints while routing, 1206 resistor packs and 0603 capacitors are recommended.
- Make sure power routings are decoupled correctly. Due to severe space constraints, it is necessary to place 1 V_{TT} decoupling capacitor for every two R-packs.
- A PCB signal velocity of 1.6 to 2.0 ns/ft should be used, as the signal layers are fast microstrips.
- The following have to be set in the termination package:
 1. TDI and TDO have to be connected together.
 2. The VID signals have to be no-connects.
 3. The V_{TT} (1.25V) and V_{CMOS} pins have to be shorted through a wide trace (preferably about 1000 um wide, or at least the width of the pin pad rings).
 4. The V_{TT} pins of the R-packs have to be close to the capacitors.
 5. Use short and wide traces for V_{TT} and V_{SS} for the escapes on the signal layers.
 6. The VcoreDet pin and the CPUPRES# pin have to be tied to ground.
 7. The BSEL pins must be no-connects.
 8. Pin AG1 must be a no-connect.
 9. RESET# (AH4, AJ3, AM2, and X4) must be no-connects.

10. CLKREF (Y33) should have the termination identical to BCLK (W37) i.e. add a 1pf cap to GND.
- o Minimize crosstalk:
 1. Maximize line-to-line spacing (at least 10 mils between traces). The ratio of trace height to trace spacing should be 3X where possible. An absolute minimum ratio of 2X has to be maintained.
 2. Keep the dielectric constant used on the termination card between 4.2 and 4.6.
 3. Minimize the cross sectional area of the traces, (5 mil lines with 1/2 ounce/ft² copper – but beware of higher resistivity traces).
 4. Isolate AGTL/AGTL+ signals in groups. That is, route the data signals in one group, the control signals in one group, and the address signals in another group. If the groups are routed together over a plane, provide at least 25 mils separation between the groups.

Conventional “pull-up” resistor networks may not be suitable for termination. These networks have a common power or ground pin at the extreme end of the package, shared by 13 to 19 resistors (for 14- and 20-pin components). The packages generally have too much inductance to maintain the voltage and current needed at each resistive load. Platforms usually get better results with discrete resistors, resistor packages with two separate pins for each resistor, or other resistor networks with acceptable characteristics.

For additional information on the how to properly route the AGTL/AGTL+ bus, please refer to the *Pentium[®] II Processor GTL+ Guidelines*.

5.0 Termination Package Physical Description

The terminator pins must properly mate with the PGA370-pin socket shown in Figure 6 (see *PGA370 Connector Design Guidelines*). Figure 7 shows a physical format template for the termination package.

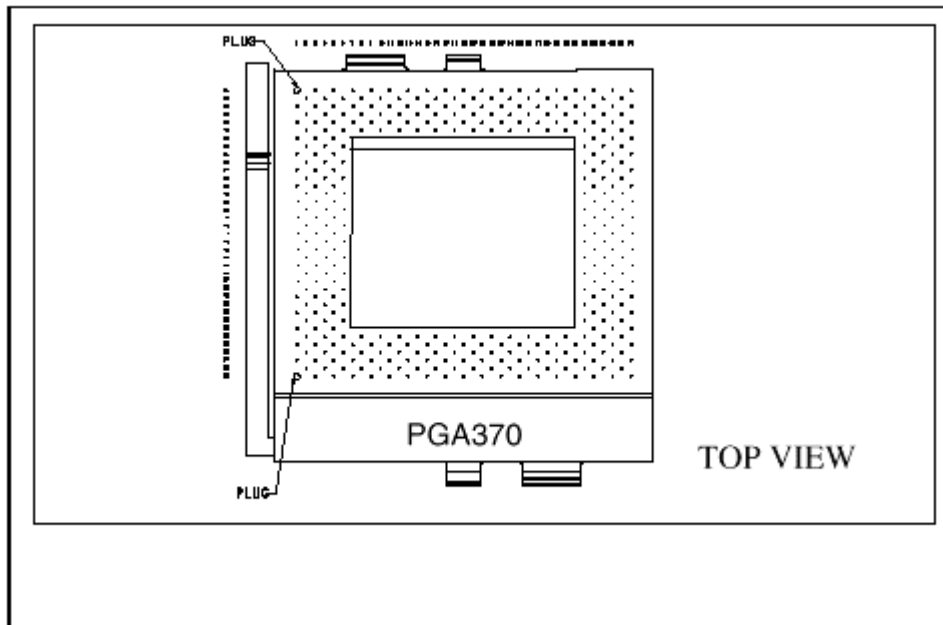


Figure 6 PGA-370 socket

6.0 TERMINATION PACKAGE RETENTION

Original Equipment Manufacturers (OEMs) install retention mechanisms on their platforms to ensure the mechanical integrity of systems with PGA370 socket processors. Depending on OEMs' specific shock and vibration specifications, the bus termination package may require a retention mechanism to remain secure. Each OEM determines the requirements for such a mechanism.

The bus termination package should be physically compatible with the same retention mechanism used for current PGA370 processors. For specifics on Intel-defined retention mechanisms, OEMs should request the appropriate drawings from their preferred suppliers.

(intentionally blank)

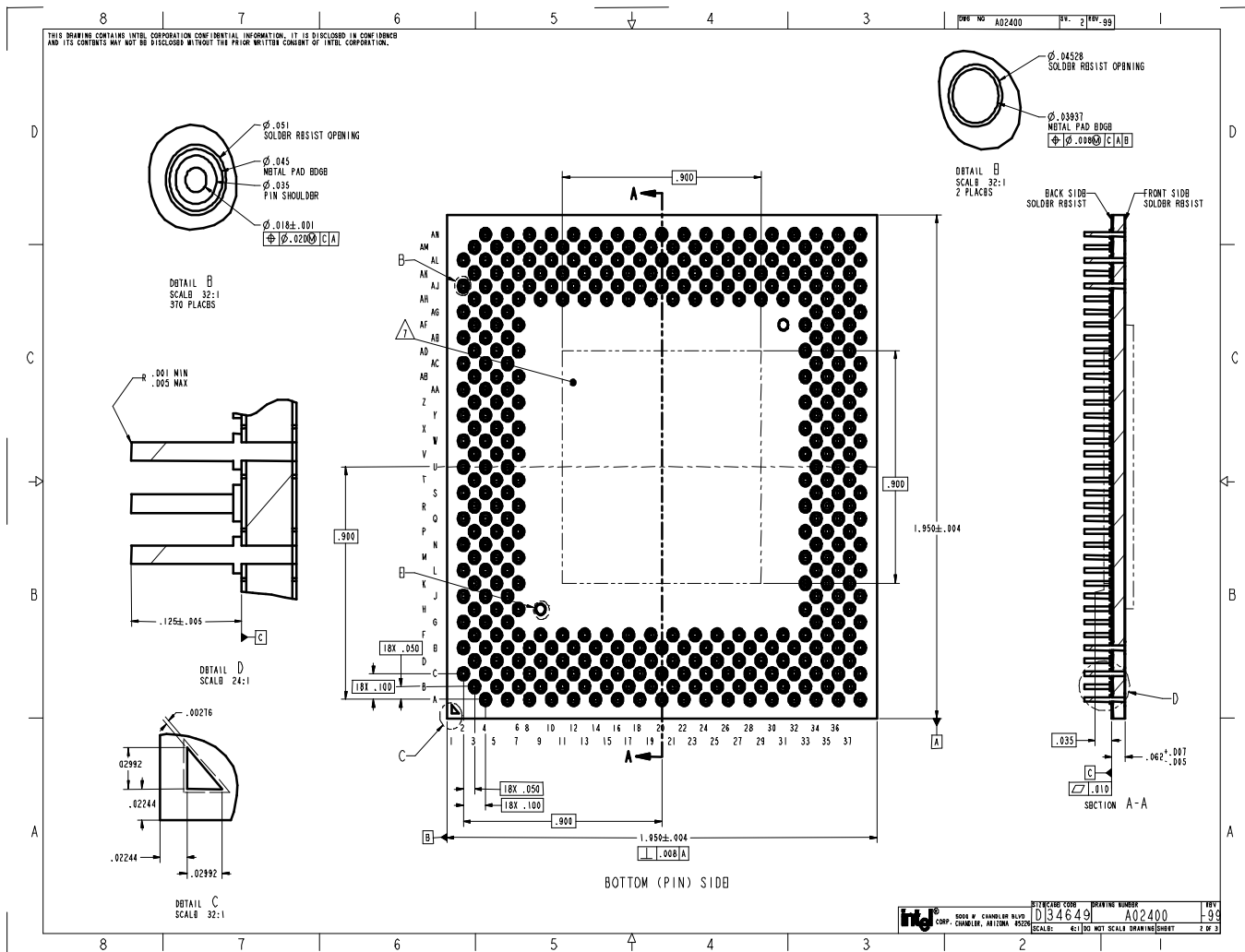


Figure 7 Termination Package Dimensions